

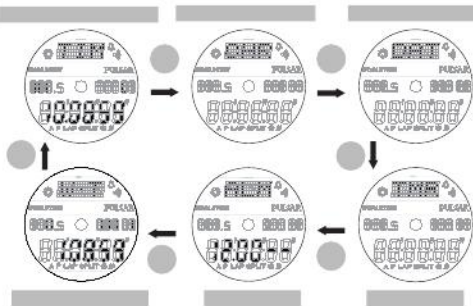
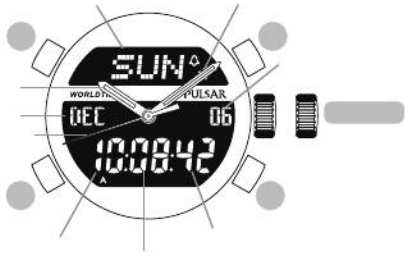
PULSAR

CAL. N021 DUO-DISPLAY QUARTZ

- Analogue time display
- Digital time and calendar
- Chronograph
- Data recall function
- Timer
- 3-channel alarm
- World time function
- Illuminating light
(Electroluminescent panel)

ENGLISH

English



English

ILLUMINATING LIGHT

- B** Press to turn the illuminating light on.



The built-in electroluminescent backlight illuminates the display for approximately 3 seconds for easy viewing in darkness.

NOTES

- ◆ The electroluminescent panel loses its luminance as the battery becomes weaker with use. Also, its luminance level decreases gradually with use.
- ◆ When the illuminating light becomes dim, replace the batteries. If the light remains dim after the batteries are replaced, have the electroluminescent panel replaced by the retailer from whom the watch was purchased.
- ◆ While the illuminating light is used, the watch gives out a slight noise. However, this is normal and not a malfunction.

SCREW DOWN CROWN

[for models with screw down crown]

Unlocking the crown

- 1 Turn Crown counterclockwise until you no longer feel the threads turning.
- 2 Crown can be pulled out.

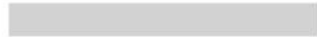
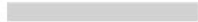
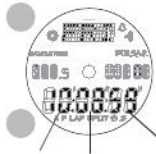
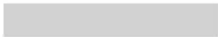
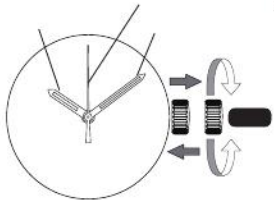


Locking the crown

- 1 Push Crown back into normal position.
- 2 Turn Crown clockwise while pressing it lightly until tight.



English



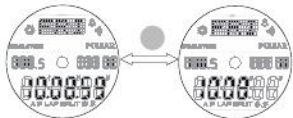
English

English

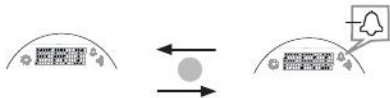


English





English



English



STOPWATCH MODE

- The stopwatch can measure up to 99 hours 59 minutes 59 seconds and 99 in 1/100 second increments.
- Up to 100 split or lap records can be taken.
- The split or lap records can be recalled in DATA RECALL mode.
For details, refer to "HOW TO USE THE DATA RECALL FUNCTION".



A Press to enter STOPWATCH mode.

D Press to reset the stopwatch to 00'00"00.

D Press to choose a display either with split time or with lap time.

00'00''00
SPLIT

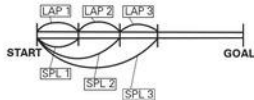
00'00''00
LAP

STOPWATCH OPERATION

When a new measurement is started, the perviously stored data will be automatically deleted.

<Standard measurement >

C **C** **D**
START STOP RESET



<Lap/Split time measurement >

C **D** **D** **C** **D**
START LAP/SPLIT LAP/SPLIT STOP RESET

NOTES

- When the stopwatch is working, the stopwatch mark flashes.
- When a split or lap time is taken, the measured time will be shown on the display along with the split or lap number for 7 seconds, and then the display automatically returns to the ongoing measuring display.



- When the total number of split or lap records reaches 100, "FULL" and "L-100" will be alternately shown on the display. After that, even if the button D is pressed, no more record will be taken.
- Even if the STOPWATCH mode is changed to a different mode while the measurement is in progress, it continues counting properly. After using the stopwatch, be sure to stop the function in order to conserve the battery life.



HOW TO USE THE DATA RECALL FUNCTION

- Up to 100 measurement data can be recalled.
- The "total time," each "lap time," "best lap time and best lap number," and "average lap time" will be presented.
- The measurement data will be stored until the next measurement is started.

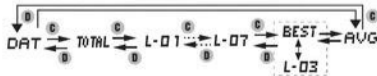
HOW TO RECALL MEASURED DATA



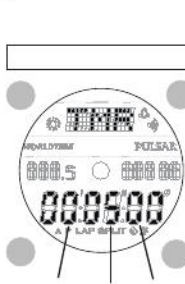
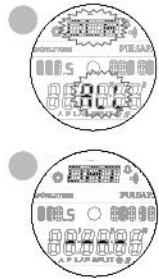
A Press to show DATA RECALL mode.

C or **D** Press to view the data in the order below.

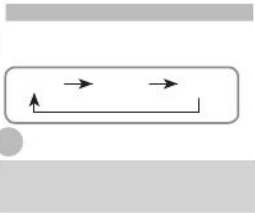
Press the button C to view the data in the ascending order and press the button D to view the data in the descending order. The data is shown quickly if each button is kept pressed. When the best lap time is shown, "BEST" and the best lap number are alternately displayed.



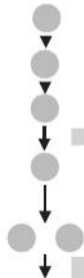
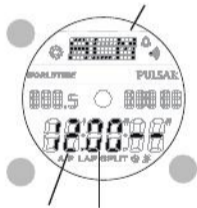
English



English

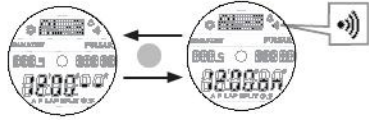


English



English

English



English

Time difference from GMT	City code	City name	Time difference from GMT	City code	City name
+8	BJS	Beijing	-8	YVR	Vanvouver
+9	SEL	Seoul	-8	LAX	Los Angeles
+9	TYO	Tokyo	-7	DEN	Denver
+9.5	ADL	Adelaide	-6	CHI	Chicago
+10	GUM	Guam	-5	NYC	New York
+10	SYD	Sydney	-5	YMQ	Montreal
+10	OOL	Goldcoast	-5	BOS	Boston
+11	NOU	Noumea	-4	SDQ	Santo Domingo
+12	WLG	Wellington	-3	BUE	Buenos Aires
-10	HNL	Honolulu	-3	RIO	Rio de Janeiro
-9	ANC	Anchorage	-1	PDL	Azores

In some countries, the daylight saving time may be in effect. The time difference and daylight saving time of various countries are subject to change, according to the governments of respective countries or regions.

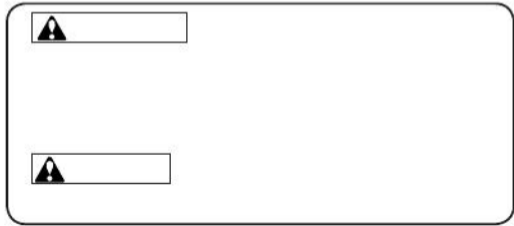
BATTERY CHANGE

**2
Years**

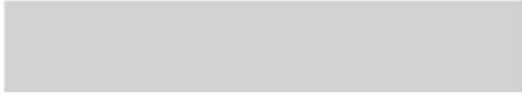
Battery life : Approx. 2 years

Battery : SEIKO SR626SW, 1 piece (for analogue display)
SEIKO CR2016, 1 piece (for digital display)

- The battery life may be less than 2 years if:
 - the alarm is used more than once a day,
 - the stopwatch is used more than one hour a day,
 - the illuminating light is used more than once a day.
- **Even if either of the two batteries has run down, replace both of them with new ones.**
- As the batteries are inserted at the factory to check the function and performance of the watch, their actual lives once in your possession may be less than the specified period.
- When the batteries expire, be sure to replace them as soon as possible to prevent any malfunction.
- We recommend that you contact an **AUTHORIZED PULSAR DEALER** for battery replacement.
- The watch is equipped with a battery life indicator that enables you to know when the battery needs to be replaced. When the indicator appears, EL backlight and sound (ALARM/TIMER) are invalid.



English



English