



ManualsLib.com

用法說明

頁

ManualsLib.com

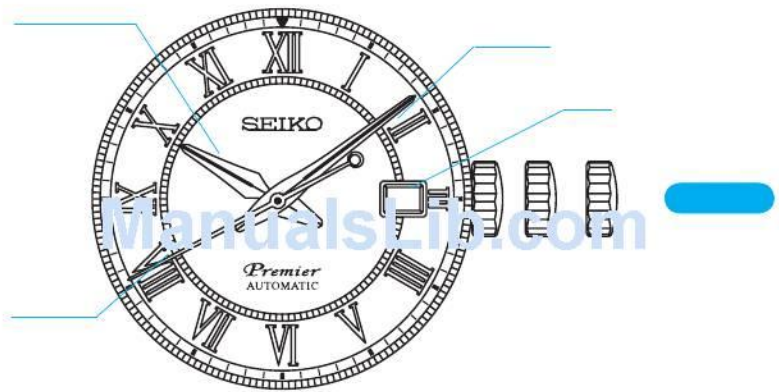
歡迎購買精工 6R15 機型自動手錶。為保證在最佳狀態下操作手錶，請在使用手錶之前仔細閱讀本手冊內的各項使用說明。並妥善保管本使用手冊以備今後參考。

ManualsLib.com

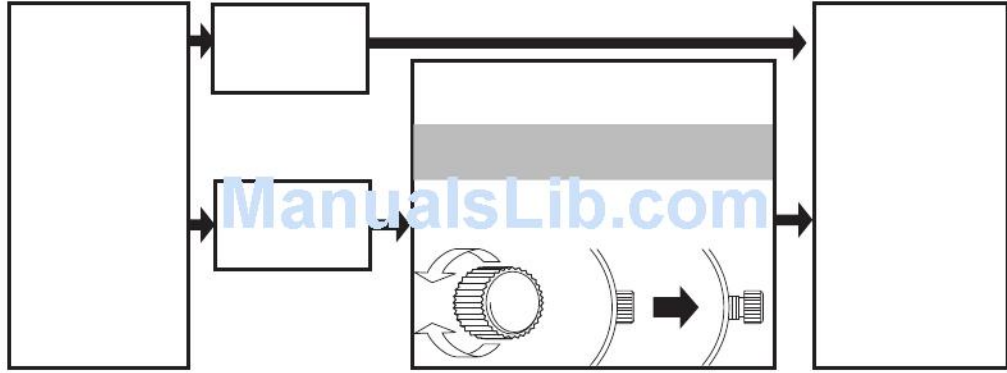
English

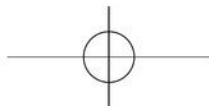
SEIKO

ManualsLib.com



English



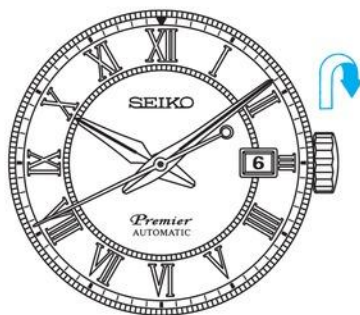


HOW TO USE

This watch is an automatic watch equipped with a manual winding mechanism.

- When the watch is worn on the wrist, the motion of the wearer's arm winds the mainspring of the watch.
- If your watch is completely stopped, it is recommended that you manually wind the mainspring by turning the crown.

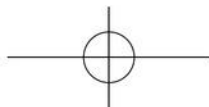
☒ How to manually wind the mainspring by turning the crown



1. Slowly turn the crown clockwise (in the 12 o'clock direction) to wind the mainspring.

* *Turning the crown counterclockwise (the 6 o'clock direction) does not wind the mainspring.*

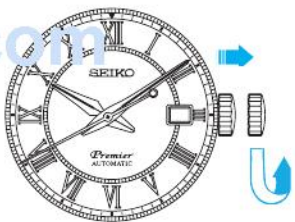
2. Continue to turn the crown until the mainspring is sufficiently wound. The second hand will start moving.
3. Set the time and date before putting the watch on your wrist.

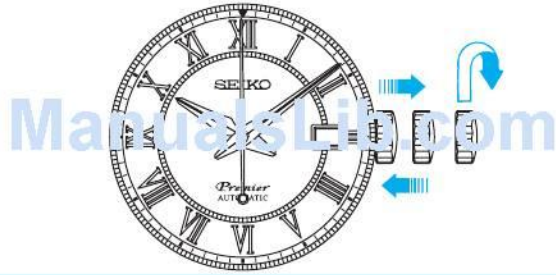


English

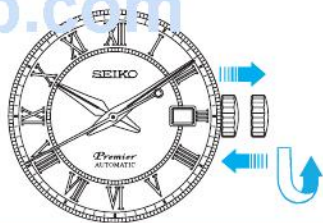
ManualsLib.com

ManualsLib.com





ManualsLib.com





ManualsLib.com



ManualsLib.com



English



ManualsLib.com

ManualsLib.com

English

ManualsLib.com

ManualsLib.com

English

ManualsLib.com

ManualsLib.com

English

ManualsLib.com