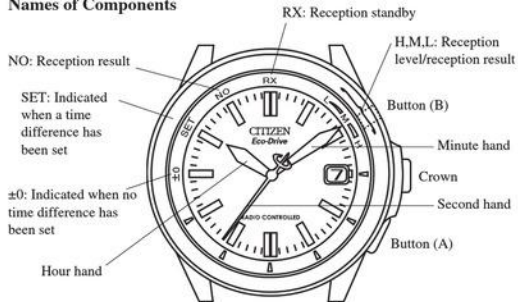


Names of Components



The design may differ slightly depending on the model.

■ This watch is a radio wave watch that receives the standard time radio wave transmitted in Germany. ■

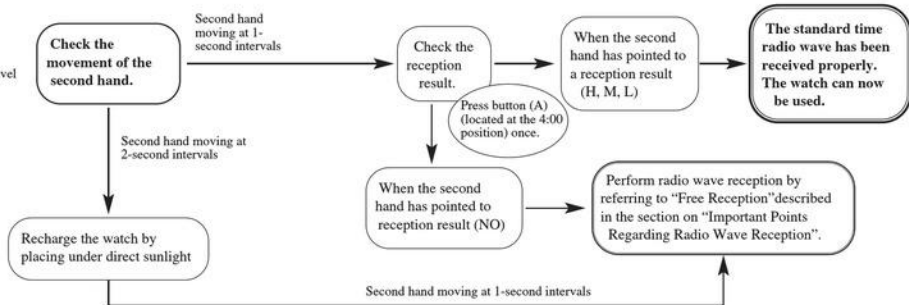
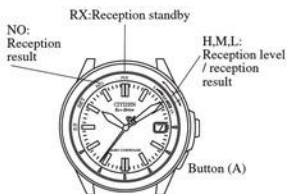
This radio wave watch is equipped with a regular automatic reception function that sets the time and date by automatically receiving radio waves twice a day at 3:00 AM and 4:00 AM, and a free reception function that allows the time to be set arbitrarily by receiving radio waves. A time difference can also be set in 1 hour units based on German standard time.

- This watch only receives the standard time radio wave transmitted in Germany during radio wave reception. It is unable to receive radio waves of countries other than Germany.
- When using the watch in a location that has a different time difference than that of Germany, set the time difference by referring to the section entitled, "5. Time Difference Correction Function". If the standard time radio wave transmitted in Germany is received after setting the time difference by another method, the time will return to German standard time.

■ Please use this watch after charging sufficiently by placing in light. ■

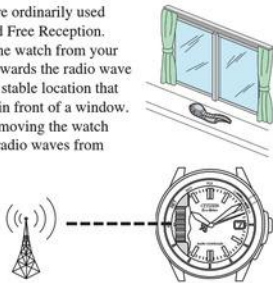
If the second hand of the watch is moving at two-second intervals while the watch is in use, this indicates that the watch is insufficiently charged. Use the watch after first recharging by placing the watch under direct sunlight for about 8 hours. To ensure that this Eco-Drive Radio Wave Watch is used comfortably without stopping, it is recommended to try to keep the watch fully charged at all times.

■ Please confirm the following before using the watch. ■



■ Important Points Regarding Radio Wave Reception ■

The two ways to receive radio waves that are ordinarily used consist of Regular Automatic Reception and Free Reception. When receiving radio waves, first remove the watch from your wrist, face the 9:00 position on the watch towards the radio wave transmitter station, and place the watch in a stable location that facilitates reception of radio waves such as in front of a window. Since the watch uses a directional antenna, moving the watch while reception is in progress may prevent radio waves from being properly received. When reception is completed, the second hand returns to one-second interval movement. Do not move the watch until radio wave reception is completed.



[Regular Automatic Reception]

The watch sets the time and date by automatically receiving radio waves at the predetermined times of 3:00 AM and 4:00 AM each day.

<Confirmation of Reception>

Check the reception result to determine whether or not radio waves have been received properly by pressing button (A) located at the 4:00 position once. If the second hand points to H, M or L, this indicates that radio waves have been received properly. The watch can now be used.

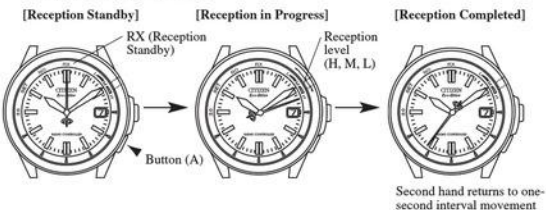
If the second hand points to NO at the 11:00 position, this means that radio waves were unable to be received properly. If this happens, perform radio wave reception using the Free Reception function.

[Free Reception]

The Free Reception function lets you receive radio waves at any time. Use this function when the reception environment has changed or in other cases when radio waves are unable to be received by Regular Automatic Reception.

<Reception Procedure>

- (1) Press button (A) located at the 4:00 position for about 2 seconds, and then release the button after the second hand has moved to the RX (12:00) position.
- (2) The second hand then moves to H, M or L indicating that reception is in progress.
- (3) When reception is completed, the second hand moves from H, M or L and returns to one-second interval movement.



* Refer to "3. Receiving Radio Waves" for further details on the procedure for receiving radio waves.

■ When Storing in a Dark Location for a Long Period of Time ■

If the watch is stored in a location out of the light for a period of one week or more, the Power Save Function of the watch is activated and the watch stops. Even though the watch is in the Power Save mode, it still continues to perform Regular Automatic Reception and the watch continues to keep the correct time internally. However, the time may not be able to be corrected as a result of being unable to receive radio waves depending on the manner in which the watch is stored. When resuming use of the watch after storing for an extended period of time, cancel the Power Save function by placing the watch in the light and then perform Free Reception to correctly set the time and date.

* Refer to "7. A. Power Save Function" for information on the Power Save function.

ManualsLib.com

ManualsLib.com

ManualsLib.com



ManualsLib.com

ManualsLib.com



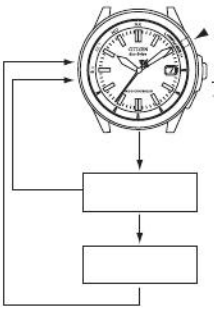
ManualsLib.com

ManualsLib.com



ManualsLib.com

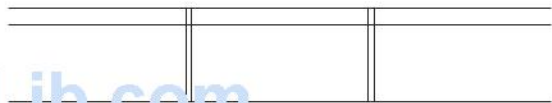
ManualsLib.com



ManualsLib.com



ManualsLib.com



ManualsLib.com

ManualsLib.com

5. Time Difference Correction Function

- This watch is equipped with a time difference correction function that lets you set a time difference in one hour units with respect to the received German standard time.
- When radio waves are received after having set a time difference, the time is displayed after correcting the set time difference.
- A time difference display monitor is provided that indicates whether or not a time difference is set with the second hand.

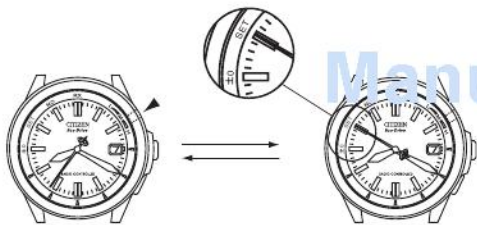
<Time Difference Setting Procedure>

- (1) Put the crown in the normal position.
- (2) Press button (B) once.
 - The second hand moves to the SET or ± 0 position to indicate that the watch has entered the time difference correction mode.
- (3) Turn the crown to correct the time difference.
 - ① When the crown is turned (one click) to the right, the hour hand moves forward (clockwise) by one hour.
 - ② When the crown is turned (one click) to the left, the hour hand moves backward (counter-clockwise) by one hour.

- Although the hour hand moves continuously when the crown is rotated continuously (by two clicks or more), move the hour hand one hour at a time to ensure that the time difference is corrected reliably.
 - Turn the crown one click to the left or right to stop continuous movement of the hour hand.
- (4) Once the time difference has been set, the second hand moves to the SET position.
 - The second hand moves to the ± 0 position if a time difference has not been set.
 - (5) Press button (B) once after setting the time difference.
 - This completes the procedure for setting a time difference. The second hand returns to one-second interval movement.

Notes:

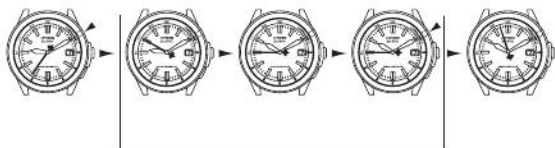
- Correct the time difference while being careful not to mistake AM, PM or the date.
- Time difference can be corrected for 10 seconds after pressing button (B) or for 10 seconds after the hour hand has stopped moving after correcting the time difference.
- The watch automatically returns to the normal display if the crown has not been operated for 10 seconds after pressing button (B) or 10 seconds after correcting the time difference.



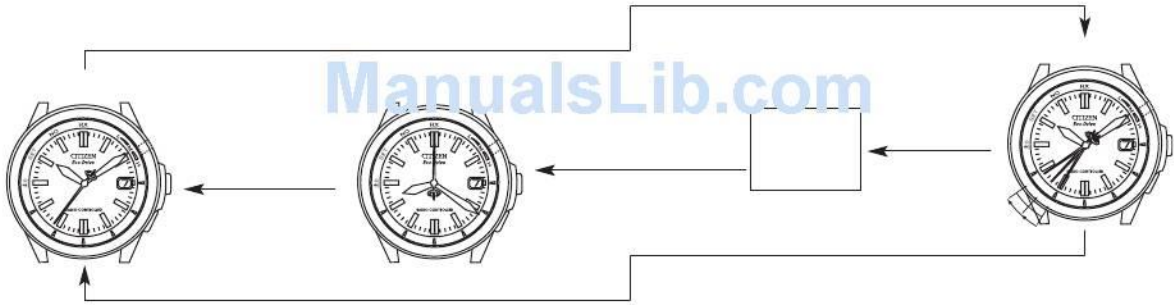
ManualsLib.com

ManualsLib.com

ManualsLib.com



ManualsLib.com



ManualsLib.com



ManualsLib.com



ManualsLib.com



ManualsLib.com





ManualsLib.com

ManualsLib.com

ManualsLib.com

ManualsLib.com



ManualsLib.com

ManualsLib.com

ManualsLib.com