

*TECHNICAL
INFORMATION*

**CITIZEN QUARTZ
Cal.No.916※※**

 **CITIZEN**

§1. OUTLINE



This watch features the regular display of "hour", "minute", "second", "AM/PM", "day" and "date" plus "year" and "month" if necessary. The time display can be switched between the 12-hour and 24-hour periods.

In addition, such additional mechanisms are incorporated as the internal illumination lamp, power cell life indicating device, automatic calendar setting device and others.

§2. MAIN FEATURES

1. The time display is possible to switch between the 12-hour and 24-hour periods in accordance with the individual way of life of the watch customer.
2. The time screen displays various kinds of information including "hour", "minute", "second", "AM/PM", "day" and "date".
3. The colon on the time screen will start to flash when the power cell requires replacement.
4. The calendar can be set automatically including the leap year.
5. The internal illumination lamp facilitates an easy reading of the display information even in a dark place.

§ 3. SPECIFICATIONS

Caliber No.		9160A
Movement	Diameter	25.7 mm ϕ
	Thickness	4.22 mm
Oscillation		32,768Hz
Accuracy		± 10 sec./month under normal temperature
Display system		FE twist type nematic LC display
Display information		12-hour period display: "Hour", "minute", "second", "AM/PM", "date" and "day" 24-hour period display: "Hour", "minute", "second", "date" and "day" *The "year" and "month" are also displayed when the display is corrected.
Correction of display		Independent correction for each digit through push-button operation
Effective temperature range		0°C ~ +60°C (32°F ~ 140°F)
Integrated circuit		C/MOS-LSI (1 unit)
Additional mechanisms		<ul style="list-style-type: none"> ● Internal illumination lamp ● Power cell life indicating device (Flashing of colon) ● Automatic calendar setting at the end of each year and month
Power cell		Small-size silver oxide power cell (1 unit) <ul style="list-style-type: none"> ● Parts No. : 280-30 ● Nominal voltage: 1.55V ● Capacity : 38 mAH ● Size : 11.6 mmϕ × 2.1 mm^t ● Life : 1 year (5 sec. lighting/day)

§4. HANDLING INSTRUCTIONS

1. How to read time and calendar



(12-hour period display)

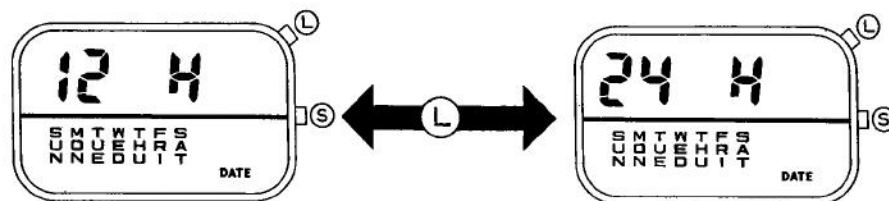


(24-hour period display)

2. How to set time and calendar

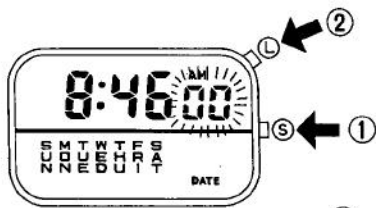
- The switching between the 12-hour and 24-hour period displays is possible when the time or calendar is set.

After setting of the day, "12H" or "24H" as shown in figure below is displayed by pushing **(S)** button and changed over with every push of **(L)** button.



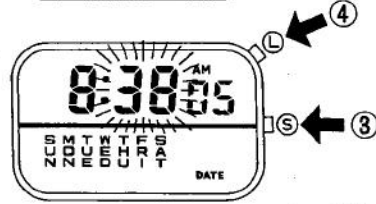
- The illumination lamp usually lights up with push of **(L)** button but does not when setting the time and the calendar even with push of **(L)** button.

The following setting procedure is based on the 12-hour period display.



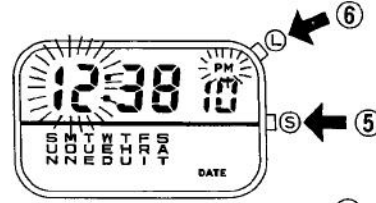
Second setting

- ① With push of **S** button after confirming the normal time display state, the "second" flashes to be set.
- ② With push of **L** button, the time is reset to zero second and then starts again. (The time is carried by one minute between 30 and 59 seconds.)



Minute setting

- ③ The "minute" flashes.
- ④ The time advances by one minute with every push of **L** button, so the standard minute can be set.



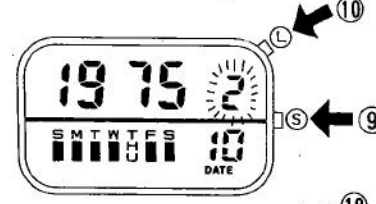
Hour setting

- ⑤ The "hour" and "AM" or "PM" flash.
- ⑥ The "hour" is set along with "AM" or "PM".



Date setting

- ⑦ The "date" flashes.
- ⑧ The "date" is set.



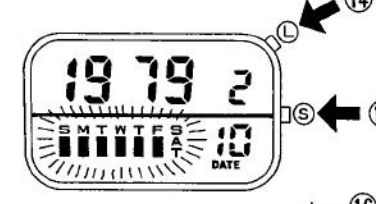
Month setting

- ⑨ The "month" flashes.
- ⑩ The "month" is set.



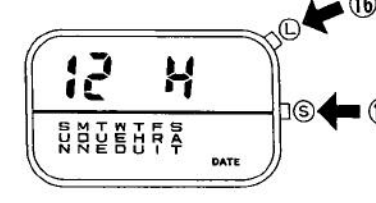
Year setting

- ⑪ The "year" flashes.
- ⑫ The "year" is set. (The year can be set in a cycle of 1970~2009.)



Day setting

- ⑬ The "day" flashes.
- ⑭ The "day" is set.



12-hour/24-hour period selection

- ⑮ The "12H" (12-hour period) or "24H" (24-hour period) is displayed.
- ⑯ The "12H" or "24H" is selected. (The "12H" and "24H" have no flashing.)



- ⑰ With push of **S** button, the normal time display is secured again.