

S064

KSJAPR1-A2101

セイコーウオッチ株式会社

SEIKO

取扱説明書

INSTRUCTIONS

S064 ストップウォッチ アプリケーション

Contents

1 Introduction	34	<u>Saving data as CSV files</u>	48
1-1 What you can do with this application	34	3-4 Delete data	49
1-2 Computer operating environment	34	3-5 Check the data saved as CSV files	50
2 Preparations		3-6 Operation of the stopwatch	51
2-1 Install the application	35	<u>Synchronize the time of stopwatch to the time of computer</u>	51
2-2 Uninstall the application	37	<u>Delete all the data stored in the stopwatch</u>	52
2-3 Connect the NFC reader [SVAZ015] to the computer	37	<u>Check the remaining battery level of the stopwatch</u>	53
2-4 Start/close the application	37	3-7 Manage multiple stopwatches	54
3 Operation	38	<u>How to connect multiple stopwatches</u>	54
3-1 Explanation of the screen	38	<u>Delete the stopwatch</u>	55
3-2 Transfer data from the stopwatch	40	4 "Data Integration" and "Data Movement"	56
<u>Reload</u>	42	4-1 [Integration]	57
3-3 Manage data with the application	43	4-2 [Movement]	58
<u>Check data</u>	43	5 Troubleshooting	60
<u>Add a memo to data/add a memo to each lap</u>	46		

1 Introduction

1-1 What you can do with this application

This is an application for the NFC data communications solar stopwatch [SVAJ701] (caliber No: S064) manufactured by Seiko Watch Corporation. Data obtained by [SVAJ701] can be checked, processed and saved as CSV files. In addition, the time of stopwatch can be adjusted, the lap time data stored in the stopwatch can be deleted, and the remaining battery level of the stopwatch can be checked.

1-2 Computer operating environment

The application is compatible with Windows®7 and Windows®8 and Windows®10. An Internet connection is required to download this application. A dedicated communications device NFC reader [SVAZ015] (separately sold) is required. Use this application with the display resolution of the computer set to 1024 × 768 or more. The resolution of the application screen is fixed at 810 × 711.

34

Install the application according to the explanation on the screen.



- * An icon is created automatically on the desktop.
- * You can select a folder in which you want to save the application. Since the acquired data are saved in the same folder where the application is saved, when the folder in which the application is saved is changed due to reinstallation, etc., action such as moving the already saved data will be required.

36

2 Preparations

2-1 Install the application

The application is compatible with Windows®7 and Windows®8 and Windows®10. You can download this application from the Seiko Watch Corporation website. (Japanese OS version) "S06 application (Japanese)"

http://www.seiko-watch.co.jp/resource/application/S06_japanese.exe

(English OS version) "S06 application (English)"

http://www.seiko-watch.co.jp/resource/application/S06_english.exe

When downloading the application, you can select the language (Japanese or English) that you want to use.

- * You cannot install the application in both languages simultaneously. For changing the language of the application, uninstall and reinstall the application.
- * Select the same language as that of the OS. If the language of the application is different from that of the OS, some characters in the application may not be displayed correctly. For Japanese OS version, select Japanese. For English OS version, select English.

35

2-2 Uninstall the application

Select the application from "Programs and Functions" in the control panel, and follow the instructions on the screen to uninstall the application.

File name: S06 Stopwatch

- * Data stored in the computer is not deleted by this operation. To delete data stored in the computer, delete them from the folder where they are stored.
- * The icon on the desktop is deleted automatically.

2-3 Connect the NFC reader [SVAZ015] (separately sold) to the computer

Connect the NFC reader [SVAZ015] to a USB port of the computer. The green light on the top surface of the NFC reader flashes, indicating that the reader is ready for data reception.

- * To cancel the connection, follow the instructions of the OS.
- * The NFC reader [SVAZ015] does not guarantee connection with any NFC device other than the NFC data communications solar stopwatch [SVAJ701] manufactured by Seiko Watch Corporation.

2-4 Start/close the application

Start the application from the icon on the desktop or from the start menu. To close the application, press the [Close] button on the application.

37

3 Operation

3-1 Explanation of the screen (Upper row)

Menu Bar

A tab is created automatically for each stopwatch. The indication of the tab can be changed as you like.

Calendar: The days when data are acquired are displayed in boldface type.

Acquired data: When you select a day on the calendar, the data acquired on that day are displayed in units of blocks according to the time of acquisition.

Delete: The acquired data you select are deleted.

All data: You can view the list of CSV files stored.

3-1 Explanation of the screen (Lower row)

Measurement data: Details of the acquired data are displayed. A memo can be added to each lap.

Information: Information of the acquired data currently selected is displayed; total time, number of laps, best lap No., best lap time, and average lap time.

Memo: A memo can be added to the acquired data.

Time synchronization function: The time of the connected stopwatch is synchronized to the time of computer. When this function is not used, uncheck the function.

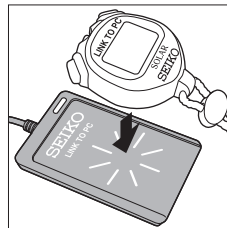
Battery life indicator: The remaining battery level of the connected stopwatch is displayed.

Close: The application is closed.

3-2 Transfer data from the stopwatch

Transfer data

Check that the NFC reader [SVAZ015] is connected to the computer, and start the application. Place the stopwatch in which the data you want to transfer are stored on the NFC reader. With a beep sound, the data not having been transferred yet are automatically transferred to the application.



The first screenshot shows three data entries:

- 2014/06/17 14:30:15
- 2014/06/17 14:52:30
- 2014/06/17 15:43:18

The second screenshot shows four data entries, with the last one highlighted by a dashed box:

- 2014/06/17 14:30:15
- 2014/06/17 14:52:30
- 2014/06/17 15:43:18
- 2014/06/17 16:12:07

The number of lists of transferred data increases.

- * Only the data that have not been transferred yet are automatically transferred. The already transferred data stored in the stopwatch can be transferred from the "Reload" menu.
- * When the stopwatch is in the following state, data are not transferred:
 - When the stopwatch is measuring time;
 - When data have not been defined (when data have not been saved in the stopwatch);
 - When the stopwatch is in PS (Power Save) mode or SL (Sleep mode);
 - When the stopwatch has not been sufficiently charged;
 - When the stopwatch is not in the time setting mode or other setting modes; and
 - When objects such as metals or other NFC devices are near the stopwatch.

Reload

Check that the NFC reader [SVAZ015] is connected to the computer, and press the "Reload" menu.

Place the stopwatch in which the data you want to transfer are stored on the NFC reader. With a beep sound, all the data stored in the stopwatch are transferred to the application. After the transfer of the data, remove the stopwatch from the NFC reader.

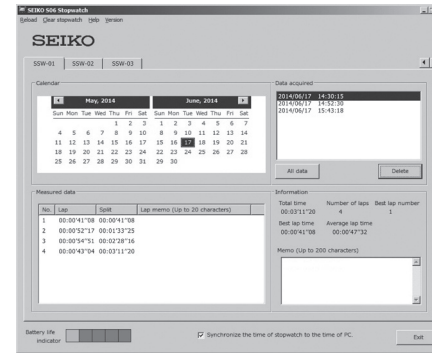
* Only the data stored in the stopwatch can be reloaded.

* The new data that overlap the original data do not overwrite the existing data; the original data remain.

Up to 300 data of lap time in blocks are stored in the stopwatch. When the number of data exceeds 300, older data are automatically deleted. Once the data are deleted, they cannot be restored. Make sure to transfer data to the application each time a measurement is made to prevent the necessary data from being deleted.

3-3 Manage data with the application

Check data

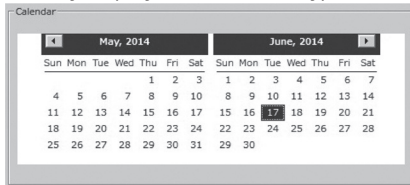


On the calendar, select a day when the data you want to check were acquired.

42

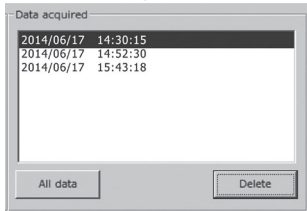
43

The day displayed in boldface type is the day when data are registered.



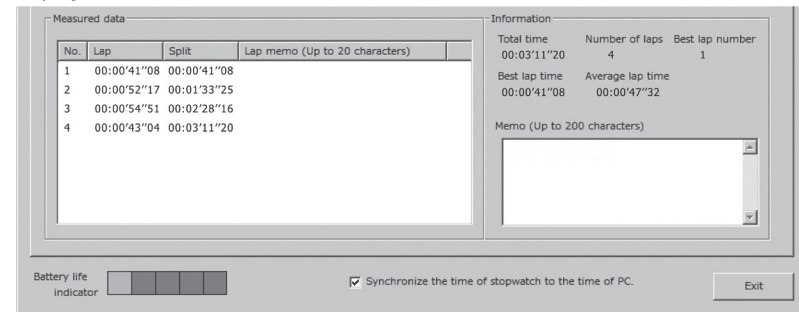
On selecting a day, the data acquired on that day are displayed in the acquired data box in the order of the time of acquisition.

* The time of acquisition is linked with the time of stopwatch.



44

On selecting the acquired data you want to check, the details are displayed in the measurement data box, and information such as the number of laps is displayed in the information column.



45

Add a memo to data/add a memo to each lap

With this application, you can add a memo to "entire acquired data" and to "each lap of measurement data."

Double click "Lap Memo" or "Memo" to write a memo.

"Acquired Data"

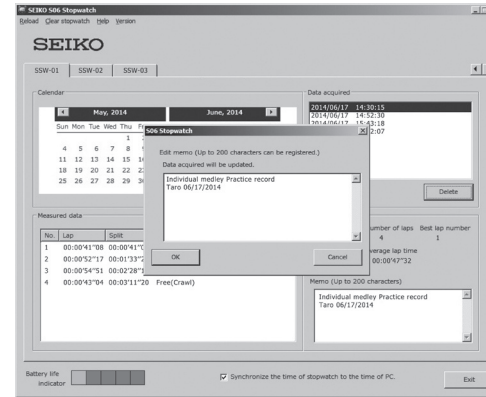
You can add a memo to the entire record. Up to 200 characters can be entered.

Example: "Swimming school individual medley practice record Taro June 17, 2014."

"Measurement Data"

You can add a memo to each lap. Up to 20 characters can be entered for each lap.

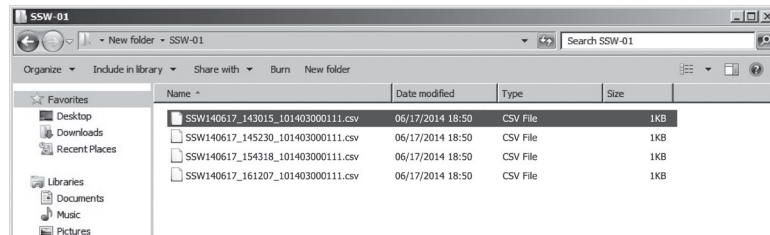
Example: "(LAP 1) Butterfly, (LAP 2) Backstroke, (LAP 3) Breaststroke, (LAP 4) Free," etc.



* The written memo is automatically reflected in the CSV files.

Saving data as CSV files

Data are automatically saved as CSV files. The saved CSV files can be confirmed from the "All Data" button.



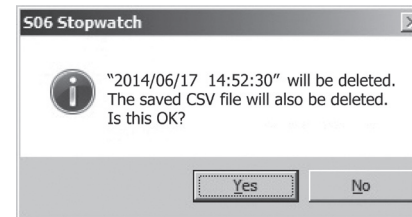
* The file name is automatically created. [SSW acquisition date_acquisition start time_stopwatch ID No.]

* The CSV files are "Read Only" files. To process data, save the file with a different name and remove "Read Only" status.

* When the original file name is changed, this application may not be able to read it. Be careful when you change the file name.

3-4 Delete data

Select data you want to delete from "Acquired Data," and press the "Delete" button.



* Once data are deleted, they cannot be restored. Take care not to delete the necessary data.

* The corresponding CSV data will be also deleted and cannot be restored.

* The data remained in the stopwatch can be reloaded from the "Reload" menu.

3-5 Check the data saved as CSV files

Press the "All Data" button and check the list of CSV files.

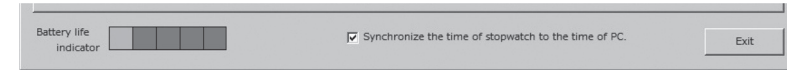
- * The file name is automatically created [SSW acquisition date_acquisition start time_stopwatch ID No.]. When the original file name is changed, this application may not be able to read it. Be careful when you change the file name.
- * The CSV files are "Read Only" files for data protection. To process data, save the file with a different name and remove "Read Only" status.
- * To open and process the CSV files, select a program to open CSV files as necessary.

3-6 Operation of the stopwatch

Synchronize the time of stopwatch to the time of computer

Check "Synchronize the time of stopwatch to the time of computer" on the application. When data are transferred, the time of stopwatch is synchronized to the time of computer.

Uncheck "Synchronize the time of stopwatch to the time of computer" when synchronization is not necessary.

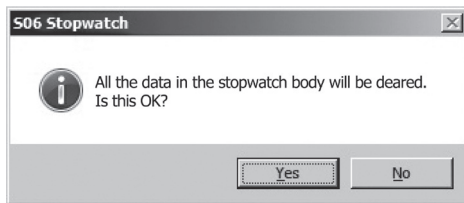


- * Every time data are transferred, time is synchronized.
- * Note that correct time is not displayed if the time of computer is not synchronized to the standard time.
- * Time can be set by the stopwatch alone. For details, read the instruction manual of the stopwatch.

Delete all the data stored in the stopwatch

Make sure that the NFC reader [SVAZO15] is correctly connected to the computer.

Press the [Stopwatch Clear] menu.



Place the stopwatch whose data are to be deleted on the reader. With a beep sound, all the data stored in the stopwatch are deleted.

- * Once the data of the stopwatch are deleted, they cannot be restored. Pay careful attention when deleting the data.
- * This operation does not delete the data stored in the application.

Check the remaining battery level of the stopwatch

When data are transferred, the remaining battery level of the stopwatch can be checked.



The remaining battery level is displayed at the lower row of the screen. Charge the battery according to the remaining battery level.

Application display	Battery status	Function limit	Display on the stopwatch
■ ■ ■ ■ ■	Fully charged	None	
□ ■ ■ ■ ■	Charged	None	
□ □ ■ ■ ■	Charged	None	
□ □ □ ■ ■	Charging the battery is recommended.	None	
□ □ □ □ ■	Charge the battery before use.	No communication sound	
□ □ □ □ □	Charge the battery before use.	Communications not possible	(Only frame)

3-7 Manage multiple stopwatches

Up to 100 stopwatches [SVAJ701] can be connected with this application. Each stopwatch is identified by the ID number individually given. Tabs are automatically created in the order of recognition by the application, enabling data management for each stopwatch.

How to connect multiple stopwatches

To transfer data, follow the normal data transfer procedures. The ID number of the stopwatch is automatically recognized. When a new stopwatch is detected, a tab is automatically created (tabs are named in the order of recognition by the computer, like SSW-01, SSW-02, SSW-03 ...).

* Since the tabs are named in the order of recognition by each computer, even when the same stopwatch is used, if the recognition order by the computer is different, the name of the tab is also different.

54

4 “Data Integration” and “Data Movement”

When you want to move data stored and managed in the computer, perform “Data Integration” or “Data Movement” .

“Integration”

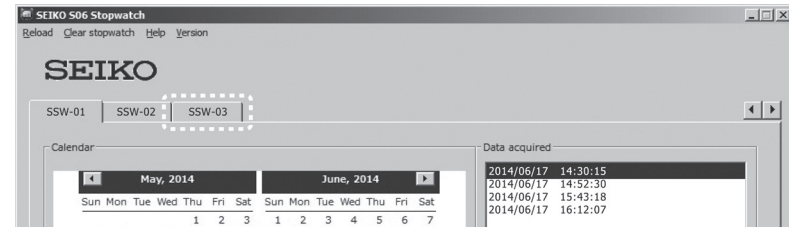
The data from the same stopwatch managed by multiple computers are integrated and managed as one.

“Movement”

All the data managed by a computer are moved to a different computer and managed.

[Caution] When performing [Integration] or [Movement], make sure to backup data to protect important data. Pay careful attention when performing “Movement” in particular, since the original data stored in the destination computer will be destroyed and overwritten.

56



The stopwatch ID tab can be individually renamed by the application. Right-click the displayed tab, select “Rename,” and rewrite the name. Up to 20 characters can be entered.

Example: SSW-02 → For second graders

* The changed name is not reflected in the CSV files. It can be displayed only when data are browsed with the application.

Delete the stopwatch

The registered stopwatch and the data acquired from that stopwatch can be deleted. Right-click the displayed tab, and select “Delete.”

* The data acquired from the deleted stopwatch will also be deleted. Pay careful attention as the deleted data cannot be restored.

55

4-1 [Integration]

The data from the same stopwatch managed by multiple computers are integrated and managed as one.

- ① Start the application on the computer in which the data you want to integrate are stored.
- ② After selecting the tab of the stopwatch in which the data you want to integrate are stored, click the [All Data] button and open Explorer.
- ③ Select the data (CSV files) that you want to integrate and copy it to a USB memory, etc.
- ④ Start the application on the destination computer.
- ⑤ After selecting the tab of the same stopwatch as ②, click the [All Data] button and open Explorer.
 - * “Same” in this case means the stopwatch of the same “ID number” . The tab names displayed by the application are automatically assigned in the order of registration of stopwatches in the computer. Therefore, each computer may assign a different tab name to the same stopwatch. Make sure that the stopwatch has the same ID number from the file name, and select its tab. [ID number] [SSW acquisition day_acquisition start time_stopwatch ID number]
- ⑥ Paste the data copied in ③ on Explorer.
 - * When there is a file with the same name, a confirmation screen will appear asking if you want to “Overwrite” the file. Be careful when selecting “Overwrite,” as information such as lap memo you added with the application will be updated.
- ⑦ Restart the application.

57

4-2 [Movement]

All data managed by a computer are moved to a different computer and managed.

- ① Close the application on the data movement origin computer.
- ② Right-click the icon on the data movement origin computer, click on [Open File Location (I)] and open Explorer.

* The same can be performed from the start menu [All Programs] -> [SEIKO] -> right-click [S06 Stopwatch].

- ③ Copy the following file and all the folders in the SEIKO S06ssw folder to a USB memory, etc.

S06ssw.dat (Application system file)
 SSW-01 (Stopwatch data folder)
 SSW-02 (Stopwatch data folder)

⋮

(The number of folders differs according to the number of registered stopwatches)

SSW-01	2014/07/17 19:15
SSW-02	2014/07/08 13:51
S06ssw.dat	2014/07/17 19:15

* Backup the data before they are moved, as necessary.

- ④ Close the application on the movement destination computer.
- ⑤ Open Explorer on the movement destination computer, following the same procedure as ②.
- ⑥ If data are stored by the application on the data movement destination computer, delete the following file and all the folders.

S06ssw.dat (Application system file)
 SSW-01 (Stopwatch data folder)
 SSW-02 (Stopwatch data folder)

⋮

(The number of folders differs according to the number of registered stopwatches)

SSW-01	2014/07/08 9:30
SSW-02	2014/07/08 13:51
S06ssw.dat	2014/07/08 14:00

* Even if the data are not stored, delete the [S06ssw.dat] file on the movement destination.

- ⑦ Copy the data copied in ③ into the SEIKO S06ssw folder on Explorer.
- ⑧ Restart the application.

* The tab number of the stopwatch is the number registered by the application on the movement origin computer.

5 Troubleshooting

Symptom	Cause
The application does not start.	The application file may be broken.
Mixed languages are displayed with the application.	The OS language and the application language are different.
Data is not transferred from the stopwatch.	There is no measurement data.
	There is no data which have not been transferred yet.
	Display on the stopwatch has disappeared.
	The stopwatch is measuring time.
	The stopwatch is not fully charged.
	A reader other than the NFC Reader [SVAZO15] is being used.
Time cannot be synchronized.	"Synchronize the time of stopwatch to the time of computer" on the application is not checked.
The time of stopwatch has deviated.	The time of computer has deviated.
The CSV file cannot be processed.	The file is saved as "Read Only" for data protection.

Measure
Uninstall and reinstall the application.
Install the application in the same language as the language of the OS.
Transfer data after measuring time.
Data which have already been transferred can be transferred from "Reloading."
The stopwatch is either in PS mode or SL mode. Press any button to start the stopwatch.
Undefined data, such as time being measured, cannot be transferred. After completing the measurement, transfer the defined data.
Charge the stopwatch, and then transfer the data. * The reader has no charging function.
Use the dedicated NFC Reader [SVAZO51] (separately sold).
Check "Synchronize the time of stopwatch to the time of computer."
Correct the time of computer or adjust the time of the stopwatch itself.
Save the file with a different name and remove "Read Only" status.

When data cannot be transferred, check the following items are correct:

- The stopwatch is not measuring time;
- The data are defined (data are saved in the stopwatch);
- The stopwatch is not in PS (Power Save) mode or SL (Sleep) mode;
- The stopwatch is sufficiently charged;
- The stopwatch is not in the time setting mode or other setting modes;
- The NFC reader is properly connected to a USB port of the computer;
- The green light on the top surface of the NFC reader is flashing; and
- Metal desks or other NFC devices are not near the stopwatch.

* Data already transferred can only be transferred from "Reload."

* Data already deleted from the stopwatch cannot be transferred.

• About After-Sales Service

When you contact us for information, we may ask you the name and the version of the OS you are using and the type of computer. Please check them before contacting us.

- Please note that the specifications and the appearance of this product are subject to change without notice due to product improvements.

通話料無料 0120-612-911

お客様相談室

〒100-0005 東京都千代田区丸の内 3-1-1 国際ビル

〒550-0013 大阪市西区新町 1-4-24 大阪四ツ橋新町ビルディング

セイコーウォッチ株式会社

<http://www.seikowatches.com/>