

# PULSAR

## CAL. VD51 CHRONOGRAPH

### TIME/CALENDAR

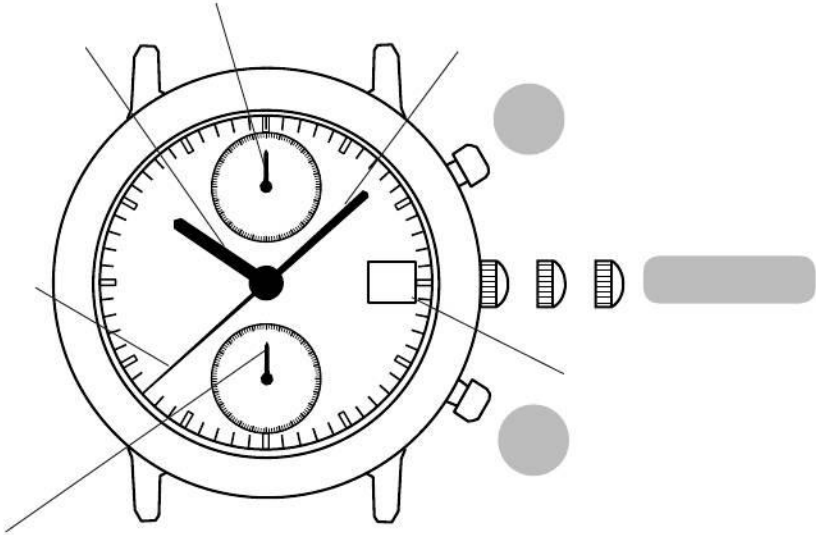
- Hour, minute and second hands
- Date displayed in numerals

### STOPWATCH

- Measures up to 60 minutes in 1-second increments
- Split time measurement

ENGLISH

English





English

# STOPWATCH HAND POSITION ADJUSTMENT

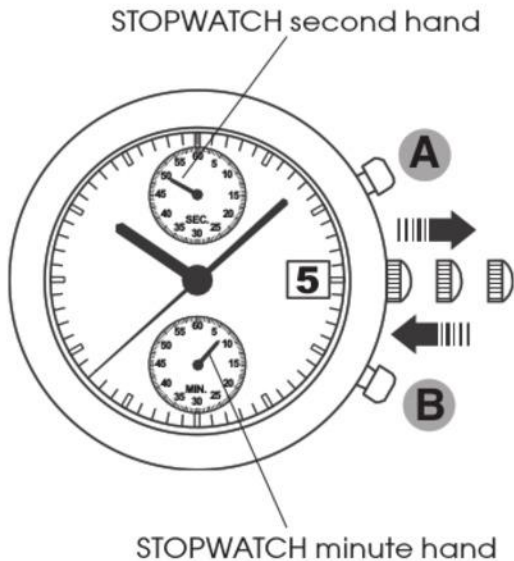
- Before setting the time, be sure to check that the STOPWATCH second and minute hands return to the "0" position when the stopwatch is reset.

## HOW TO RESET THE STOPWATCH

If the stopwatch is in use, press the buttons in the following order to reset it, and then, check if the STOPWATCH hands are at the "0" position.

- Case 1** If the stopwatch is measuring, press the button A to stop it, and then press the button B to reset it.
- Case 2** If the stopwatch is stopped, press the button B to reset it.
- Case 3** If the split time is displayed, press the button B to return the display to the normal display mode, and press the button A to stop the stopwatch. And then, press the button B again to reset it.

If any **STOPWATCH** hands do not return to the "0" position when the stopwatch is reset, reset the positions of the **STOPWATCH** hands by following the procedure below.



**CROWN**

Pull out to second click.



**A**

Press to reset the position of the **STOPWATCH** second hand to the "0" position.

**OR**

**B**

Press to reset the position of the **STOPWATCH** minute hand to the "0" position.

*The hands move quickly if the respective buttons are kept pressed.*

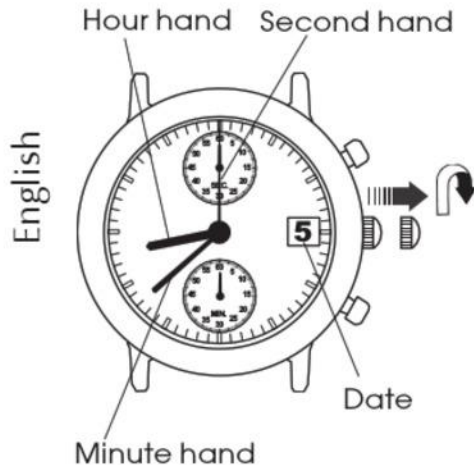


**CROWN**

Push back in to normal position.

# TIME SETTING

- Before setting the time, check that the stopwatch measurement is stopped.



## CROWN

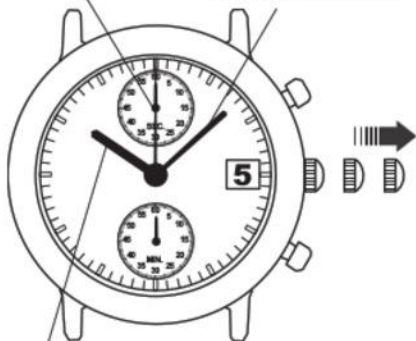
Pull out to first click, and turn clockwise until the previous day's date appears.

*Do not set the date between 9:00 P.M. and 1:00 A.M. Otherwise, the date may not change properly.*

*If it is necessary to set the date during that time period, first change the time to any time outside it, set the date, and then reset the time to the correct time.*

Second hand

Minute hand



Hour hand

**CROWN**

Pull out when the second hand is at the 12 o'clock position.

The second hand will stop on the spot.

*When the crown is at the second click position, do not press any button, as doing so will start the stopwatch.*

**CROWN**

Turn to set the hour and minute hands to the desired time.

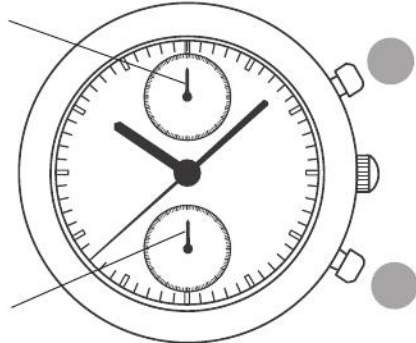
*When setting the hour hand, check that the AM/PM is correctly set. When setting the minute hand, first advance it 4 to 5 minutes ahead of the desired time and then turn it back to the exact minute.*

**CROWN**

Push back in to normal position in accordance with a time signal.

English

English

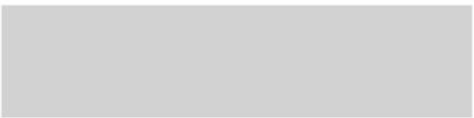
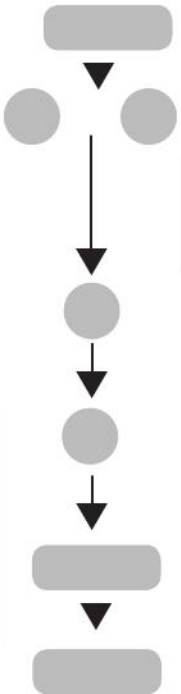
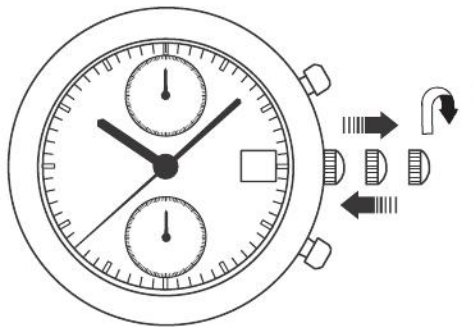




English

English





English



## **WARNING**

- Do not remove the battery from the watch.
- If it is necessary to take out the battery, keep it out of the reach of children. If a child swallows it, consult a doctor immediately.
- Never short-circuit, tamper with or heat the battery, and never expose it to fire. The battery may burst, become very hot or catch fire.



## **CAUTION**

- The battery is not rechargeable. Never attempt to recharge it, as this may cause battery leakage or damage to the battery.

# TO PRESERVE THE QUALITY OF YOUR WATCH

## WATER RESISTANCE

### ● Non-water resistant



If "WATER RESISTANT" is not inscribed on the case back, your watch is not water resistant, and care should be taken not to get

it wet as water may damage the movement. If the watch becomes wet, we suggest that you have it checked by an AUTHORIZED PULSAR DEALER or SERVICE CENTER.

### ● Water resistance (3 bar)



If "WATER RESISTANT" is inscribed on the case back, your watch is designed and manufactured to withstand up to 3 bar, such as accidental

contact with splashes of water or rain, but it is not designed for swimming or diving.

### ● Water resistance (5 bar)\*



If "WATER RESISTANT 5 BAR" is inscribed on the case back, your watch is designed and manufactured to withstand up to 5 bar and is suitable for swimming, yachting and taking a shower.

### ● Water resistance (10 bar/15 bar/20 bar)\*



If "WATER RESISTANT 10 BAR", "WATER RESISTANT 15 BAR" or "WATER RESISTANT 20 BAR" is inscribed on the case back, your watch is designed and manufactured to withstand up to 10 bar/15 bar/20 bar and is suitable for taking a bath, shallow diving, but not for scuba diving. We recommend that you wear a PULSAR Diver's watch for scuba diving.

English

