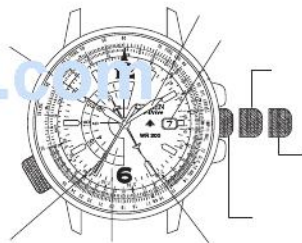


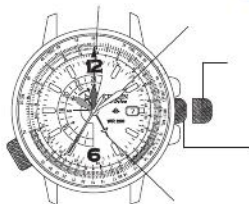
ManualsLib.com

ManualsLib.com

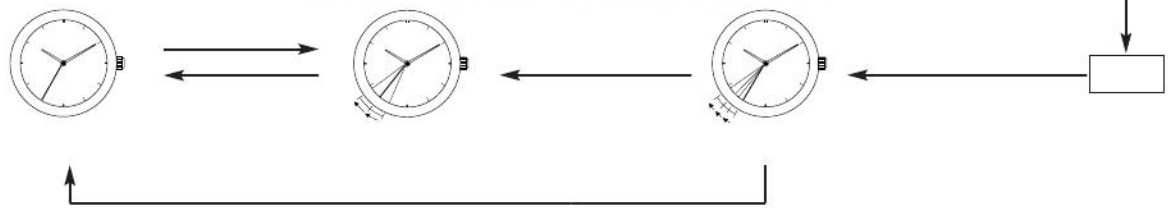


ManualsLib.com

ManualsLib.com



ManualsLib.com

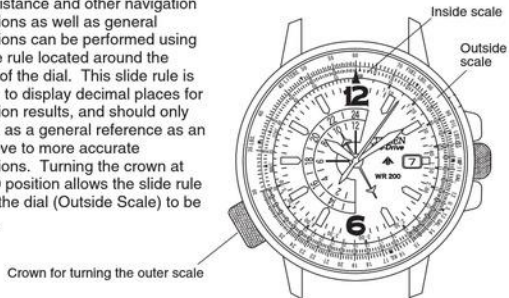




ManualsLib.com

H. USING THE SLIDE RULE

Flying distance and other navigation calculations as well as general calculations can be performed using the slide rule located around the outside of the dial. This slide rule is not able to display decimal places for calculation results, and should only be used as a general reference as an alternative to more accurate calculations. Turning the crown at the 8:00 position allows the slide rule around the dial (Outside Scale) to be rotated.

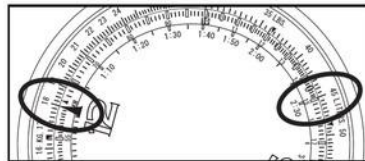


A. Navigation Calculator

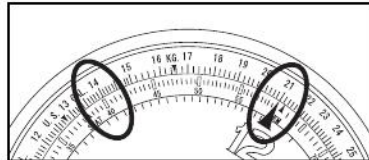
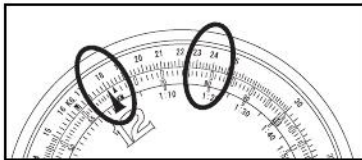
1. Calculation of time required

Question: How long does it take an airplane flying at 180 knots to fly a distance of 450 nautical miles?

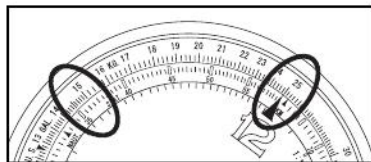
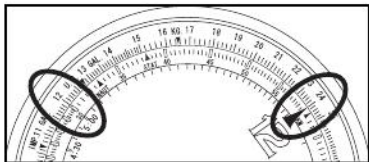
Solution: Set the 18 mark on the outside scale to the SPEED INDEX (▲). At this time, the point on the inside scale that is aligned with 45 on the outside scale indicates (2:30), and the answer is 2 hours and 30 minutes.



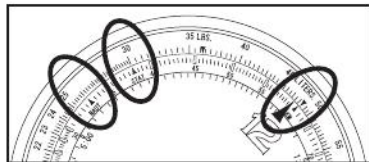
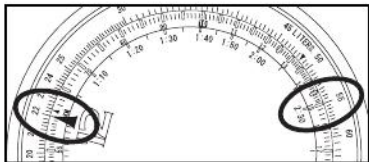
ManualsLib.com



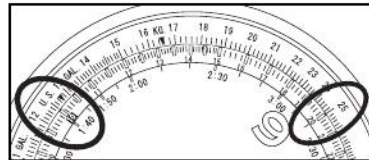
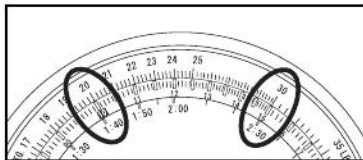
ManualsLib.com



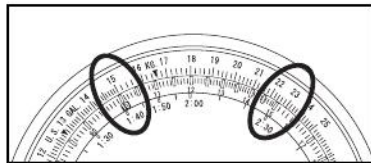
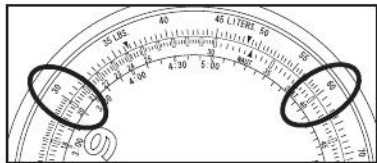
ManualsLib.com



ManualsLib.com



ManualsLib.com



ManualsLib.com



ManualsLib.com

ManualsLib.com

ManualsLib.com