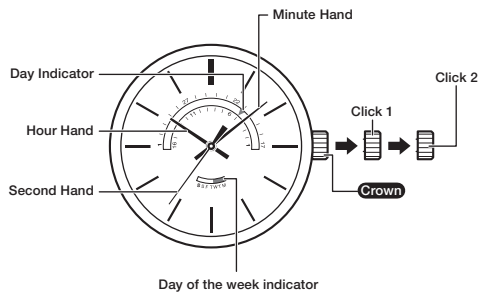


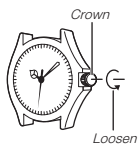
Operation Guide 5677

• Your watch may differ somewhat from the one shown in the illustration.



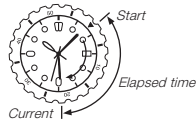
Crown Operations

Some water-resistant models (10BAR, 20BAR) have a screw-in crown. When you need to perform a crown operation, rotate it towards you to unscrew it. Then pull the crown out. Avoid applying undue force when pulling. The watch loses its water resistance while the crown is unscrewed. After performing a crown operation, fully screw the crown back in.



If your watch has a rotary bezel...

You can rotate the bezel to align its ▼ mark with the minute hand. Then you will be able to tell how much time has elapsed since aligning the ▼ mark.



Specifications

Module No.	Accuracy at normal temperature (per month)	Battery type	Battery life
5677	±20 seconds	SR920SW	Approx. 3 years

Other: Low battery alert

Specifications are subject to change without notice.

To adjust the time setting

When the second hand is at 12 o'clock, pull the **Crown** out to Click 2.

Rotate the **Crown** to change the time setting.

Push the **Crown** back in on a time signal to resume timekeeping.

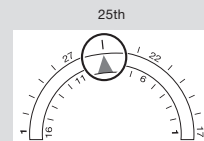
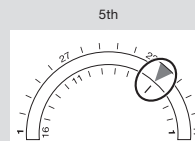
Note

- Take care that you set the correct AM or PM time.
- When changing the time, move the minute hand four or five minutes past your final setting, and then back it up to the setting you want.

To change the day indicator setting

• Align the pointer with the day you want.

Examples:



Pull the **Crown** out to Click 1.

Rotate the **Crown** towards you to set the day.

Push the **Crown** back in.

Note

- The day indicator setting uses a 31-day month. Make adjustments for months of shorter lengths.
- Avoid changing the day indicator setting between the hours of 9:00 p.m. and 4:00 a.m. Otherwise, the day indicator may not change correctly at midnight.

To change the day of the week indicator

• Align the edge of the color with the day of the week you want.



Pull the **Crown** out to Click 1.

Rotate the **Crown** away from you to set the day of the week.

Push the **Crown** back in.

Note

- Avoid changing the day of the week indicator setting between the hours of 9:00 p.m. and 4:00 a.m.

Low Battery Alert

- The second hand will jump at two-second intervals to alert you when battery power is low.
- Have the battery replaced as soon as possible after low battery alert is indicated.