

Printer Driver Instruction Manual
~ For Windows 7 ~

OP900 & CW-01

August 9, 2010 Ver.1.20

CITIZEN SYSTEMS JAPAN CO., LTD.

●Concerning Copyright

The copyrights for the OP900 Printer Driver Instruction Manual, the OP900 Printer Driver that is included with the printer, and the contents of the CD are the property of the CITIZEN SYSTEMS JAPAN CO.,LTD.

Reproduction of any or all of the contents of the OP900 Printer Driver Instruction Manual, the OP900 Printer Driver that is included with the printer, and the contents of the CD without consent of the company is a violation of copyright law.

However, for non-commercial personal use purposes, you may make 1 copy of the Printer Driver Instruction Manual solely for back-up-purposes.

Microsoft and Windows are registered trademarks of Microsoft Corporation valid in the USA and other countries.
LEADTOOLS Copyright (C) 2008 LEAD Technologies, Inc.

●Notes for Safety Purposes

Please read the Instruction Manual well before using the printer, and follow all instructions carefully.

Further, the contents of the safety warnings and comments in the Instruction Manual concerning use met safety standards at the time of publishing.

●Concerning modification

The OP900 printer and the OP900 Printer Driver and CD contents were planned, developed, and manufactured by CITIZEN SYSTEMS JAPAN CO.,LTD.

For safety purposes, any modification is prohibited.

Contents

Chapter 1 Install	1
1.1 Printer and Host computer Preparation	2
1.2 Installing the Driver Package	2
1.3 Installing the Printer Driver	5
1.4 Installing a Driver for an Unspecified Device	9
Chapter 2 Properties	12
2.1 Opening Printer Properties	12
2.2 Explanation of Print Setting Functions	14
2.2.1 Layout	14
2.2.2 Advanced Options	15
2.2.3 Paper/Quality	18
2.2.4 Option	18
2.2.5 Color Adjustment	19
2.3 Default Values for Various Settings	20
2.4 Color Management	20
2.5 Print Area	21
Chapter 3 Updating the Driver	22
Chapter 4 Driver Removal	28

Chapter 1 Install

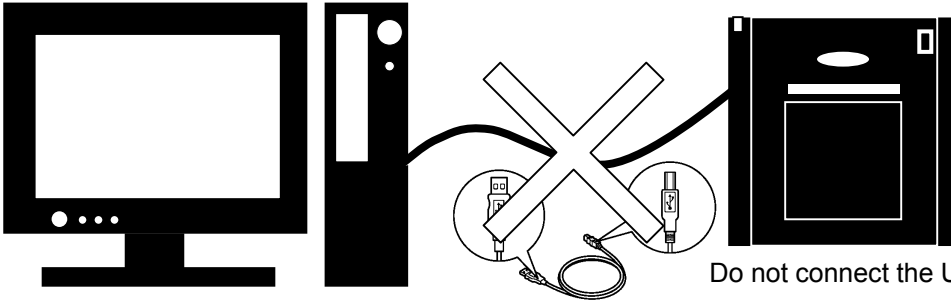
Installation Flow

Installation is done in the following 3 steps.

Details of each step are shown in a subsequent page.

STEP 1 Prepare the printer and computer

→ "1.1 Printer and Host computer Preparation"

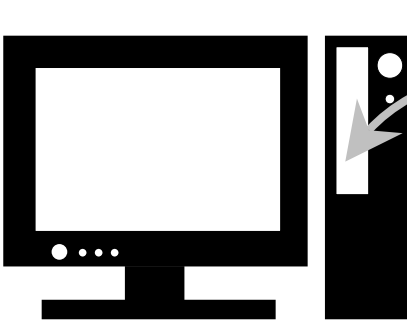


Do not connect the USB cable at this step.



STEP 2 Install the driver package

→ "1.2 Installing the Driver Package"

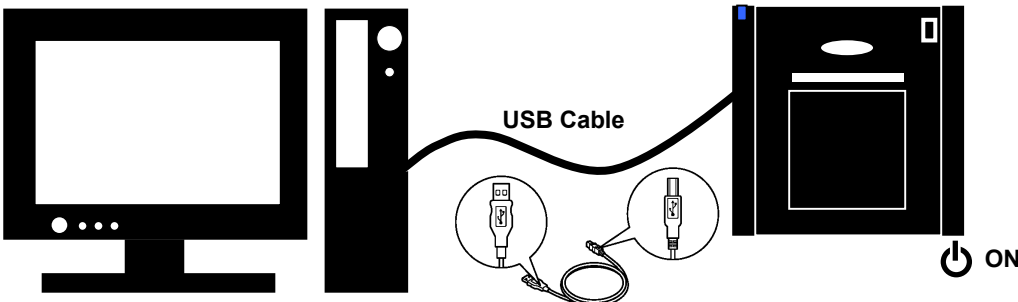


Insert the accessory CD into the disk drive and install the driver package.



STEP 3 Install the printer driver

→ "1.3 Installing the Printer Driver"



Connect the USB cable, turn the printer power ON, and install the printer driver. After installation is complete, reboot the computer.

1.1 Printer and Host computer Preparation

Check that the power for the OP900 printer is OFF.

Have a USB cable ready. But do not connect the printer to the computer with the USB cable at this point.

In order to install the driver, login with administrator right. The following explanations are given on the assumption of use with administrator rights.

1.2 Installing the Driver Package

Insert the accessory CD into the disk drive.

Start Explorer, and click on the corresponding drive. (If the AutoPlay function is on, select “Open folder to view files – using Windows Explorer”.)

Select the following folders from the accessory CD.

Drive of CD:\OP900_Driver\English\7

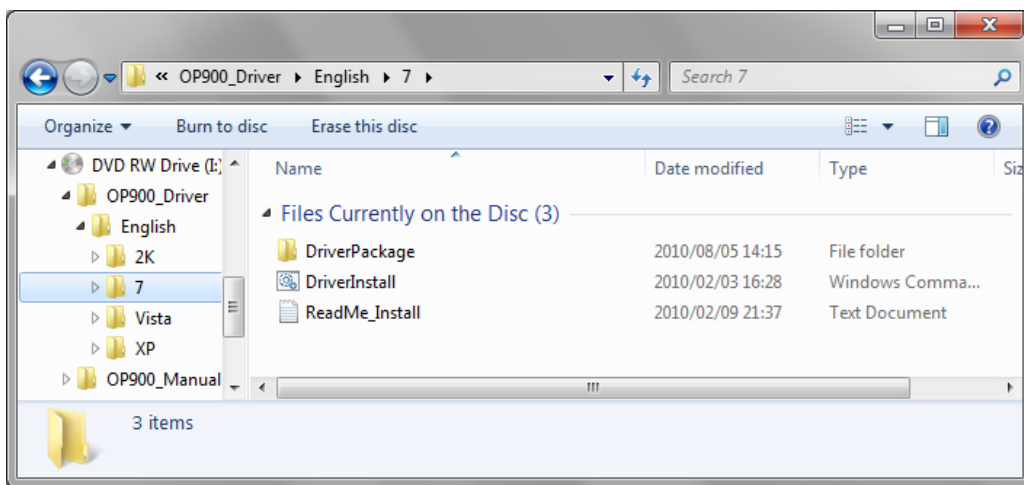


Fig 1.1 Driver Package Folder

In the selected folder, double click on the file “DriverInstall.CMD”. (Depending on your operating environment, the .CMD extension may not be shown.)

The best Driver Package Installer for your operating system (32 or 64 bit) will automatically be selected.

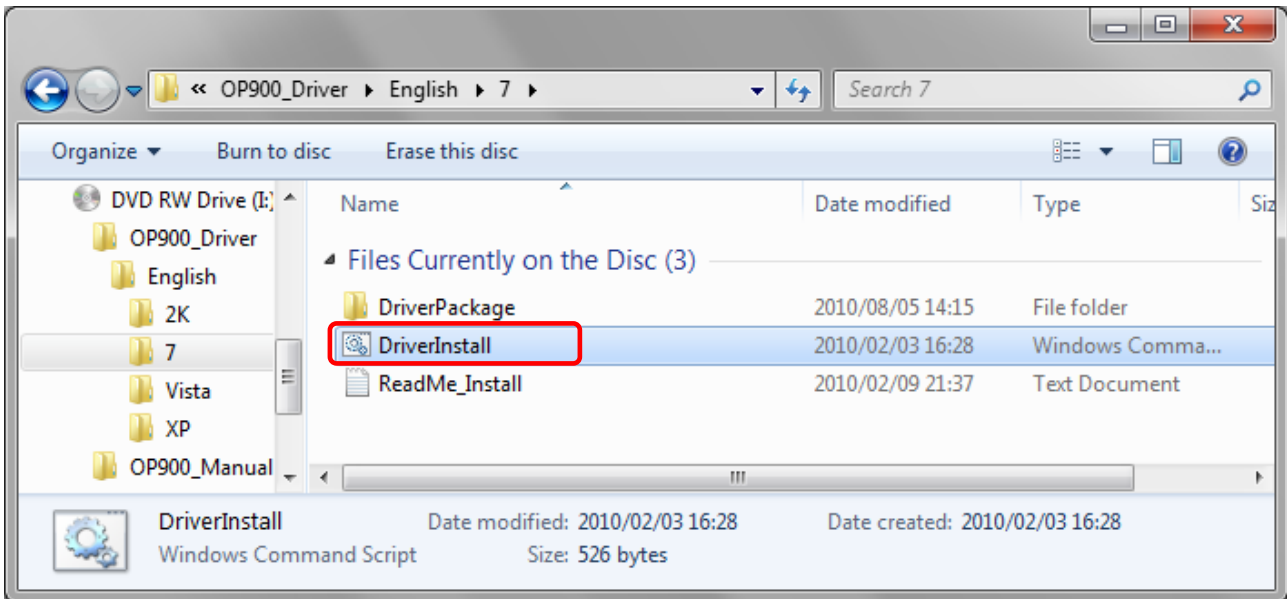


Fig 1.2 Install File

If the User Account Control dialog appears, click on “Yes”.

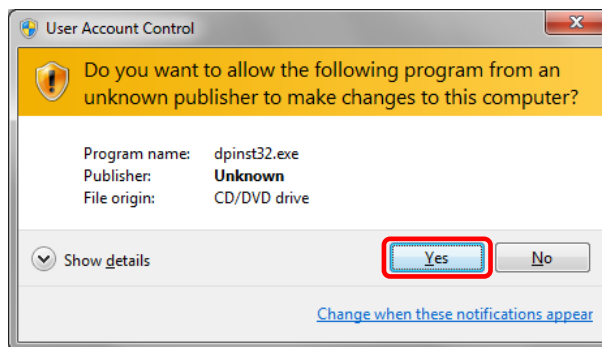


Fig 1.3 User Account Control

When the “Welcome to the Device Driver Installation Wizard!” window appears, click on “Next >”.

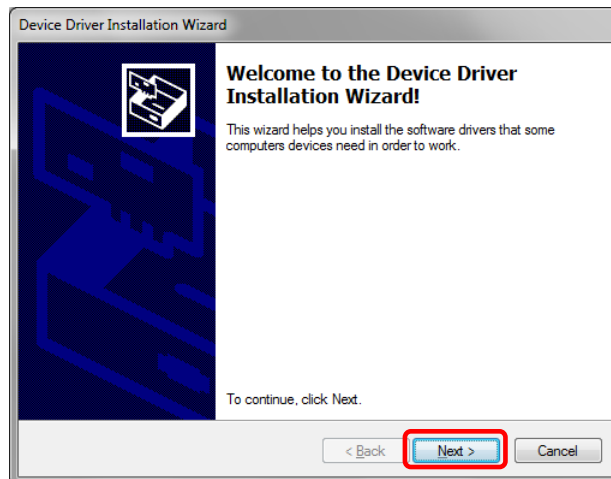


Fig 1.4 Starting of Installation Wizard

If the Windows Security confirmation window appears, click on “Install this driver software anyway”.

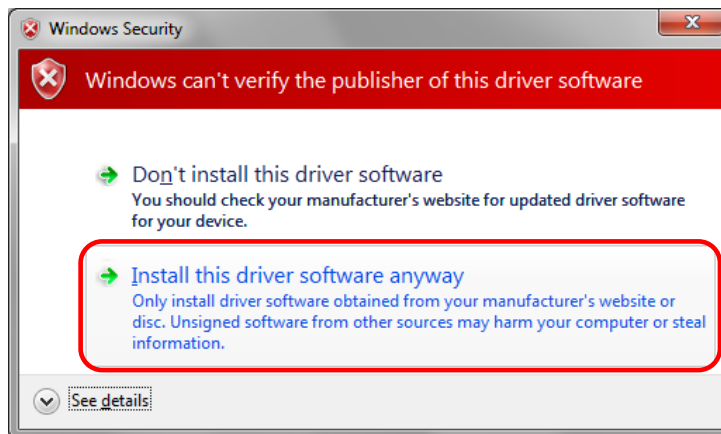


Fig 1.5 Windows Security confirmation

This starts the Driver Package installation. Please wait until it is complete.

When the “Completing the Device Driver Installation Wizard” window appears, click on “Finish”.

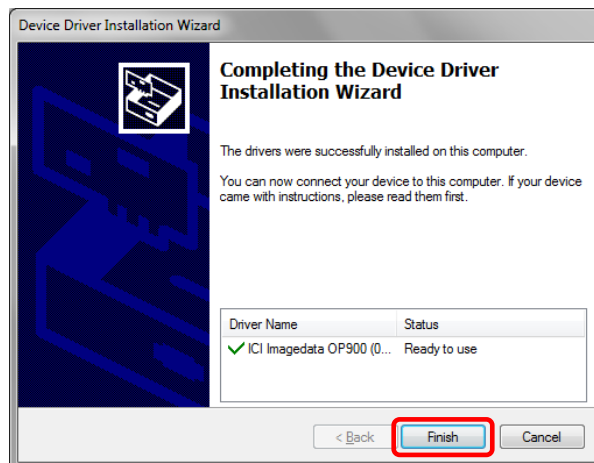


Fig 1.6 Completion of the Installation Wizard

1.3 Installing the Printer Driver

Connect the printer to the computer with the USB cable, and turn the printer power ON.

The printer will be recognized, and the driver installation should begin.

* Please refer to the manual for the OP900 printer for connection if needed.

When driver installation begins, the message “Installing device driver software” will appear above the task bar.

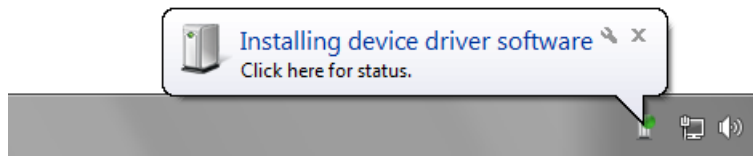


Fig 1.7 Driver Installation message

By clicking on this message, the “Driver Software Installation” window will be opened, and the driver installation status will be shown. Click on “Close” to close the window.

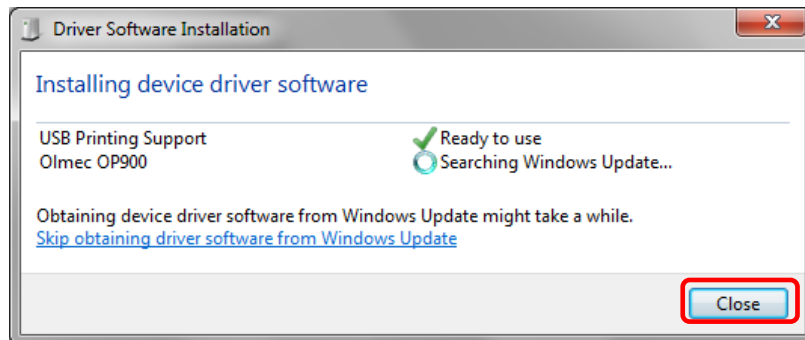


Fig 1.8 Driver Software Installation

* About “Skip obtaining driver software from Windows Update”

If the operating system setting is such that it will get the driver software from Windows Update, it will first search for the driver through Windows Update, so it will take more time to complete the installation. If you skip getting the driver software through Windows Update, the time to complete the installation will be decreased (Depending on the environment, it may take some time to complete the installation).

Click on “Skip obtaining driver software from Windows Update” in the “Driver Software Installation” window.

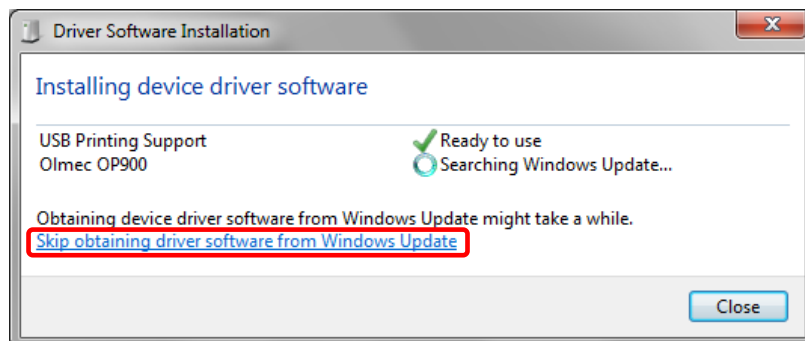


Fig 1.9 Skip obtaining driver software from Window Update

When the confirmation window appears, click on “Yes”.

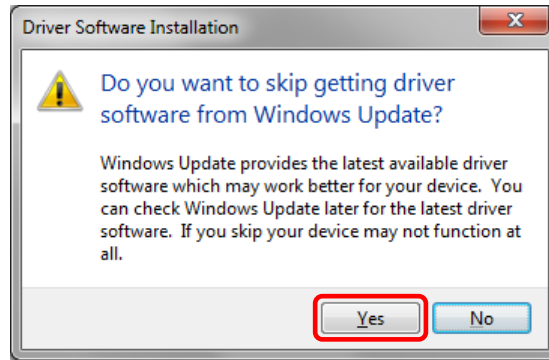


Fig 1.10 Skip getting the driver software from Windows Update

From a beginning of installation after a while, the message “Your device is ready to use” will appear above the task bar, and the printer driver installation will be complete.

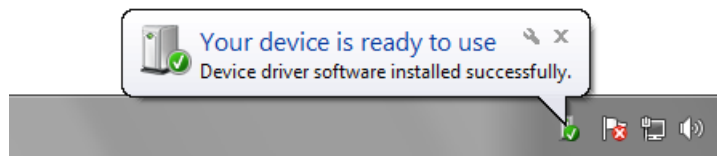


Fig 1.11 Driver Installation Complete message

By clicking on this message, the “Driver Software Installation” window will be opened, and “Your device is ready to use” will be shown. Click on “Close” to close the window.

(If the “Driver Software Installation” window is shown from the start of installation, the message above will not be shown.)

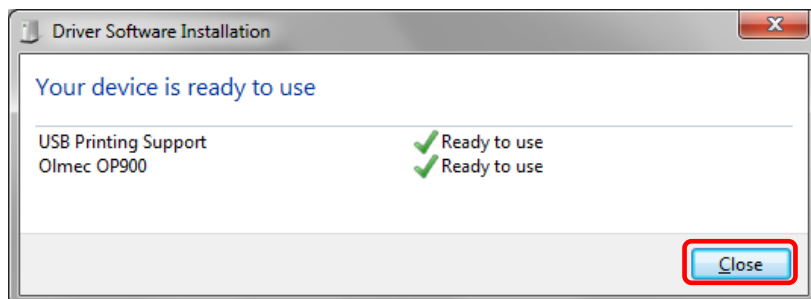


Fig 1.12 Driver Software installation complete

Select “Start”, then “Control Panel”, and open the control panel. Click on “View devices and printers” in the control panel.

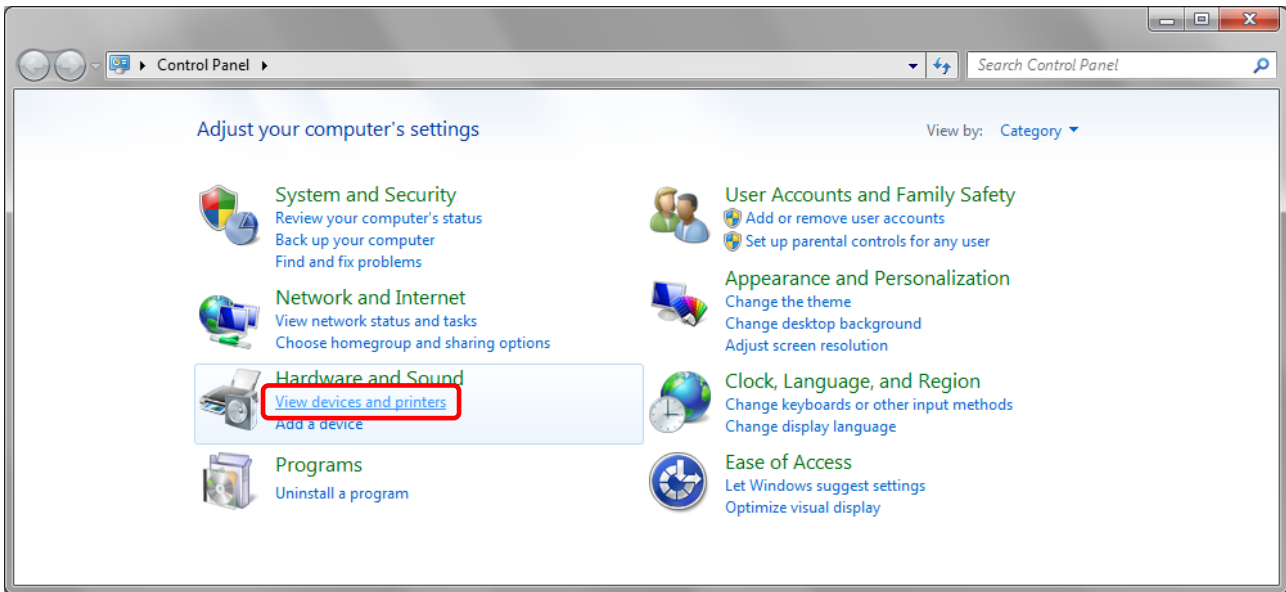


Fig 1.13 Control Panel

Check that the “Olmec OP900” is shown in the “Devices and Printers” window. Now, installation of the OP900 printer driver is complete.

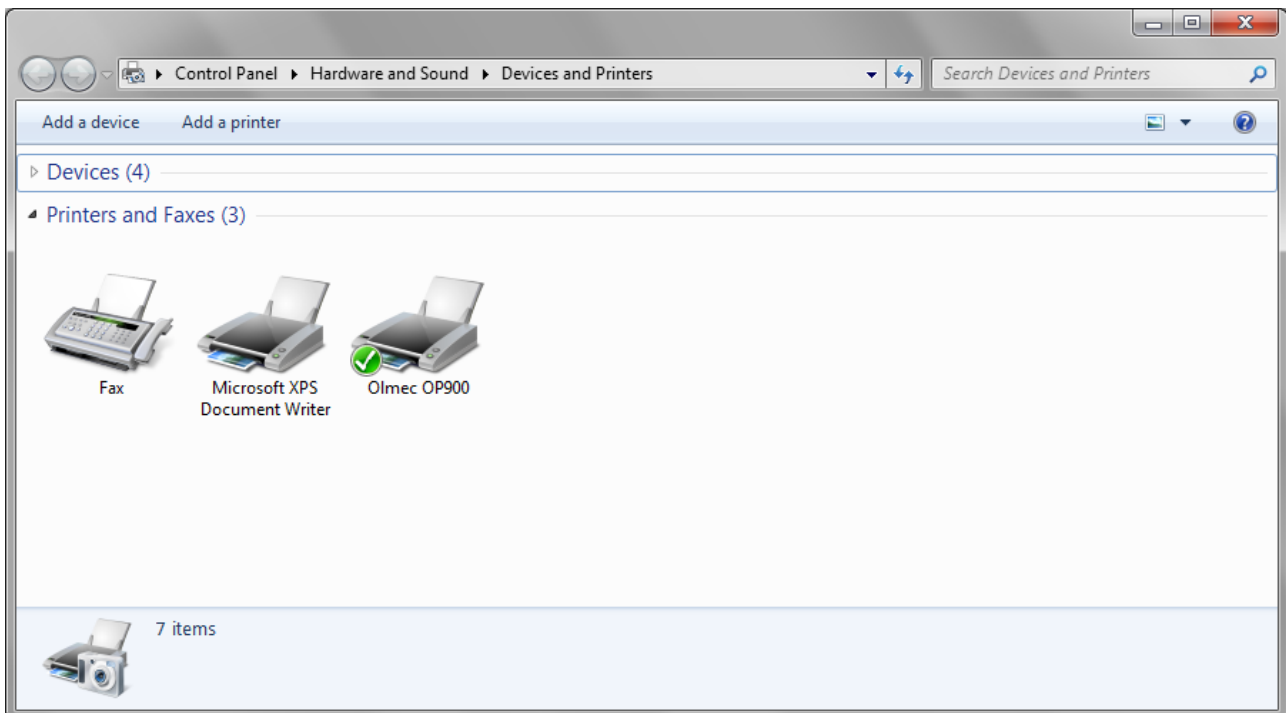


Fig 1.14 Devices and Printers window

After installation of the printer-driver is complete, be sure to reboot the computer.

If the OP900 printer driver installation was unsuccessful, the message “Device driver software was not successfully installed” will appear above the task bar.

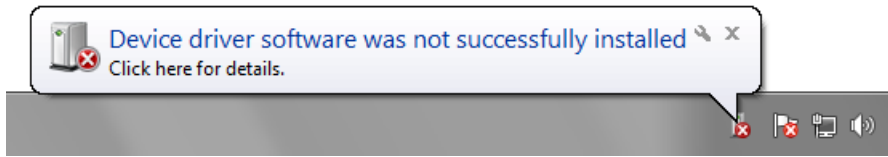


Fig 1.15 Driver Not Installed message

By clicking on this message, the “Driver Software Installation” window will be opened, and the message “Device driver software was not successfully installed” will appear. Click on the “Close” button.

(If the “Driver Software Installation” window is shown from the start of installation, the message above will not be shown.)

If the driver installation was unsuccessful, refer to the next section “1.4 Installing a Driver for an Unspecified Device” and install the printer driver.

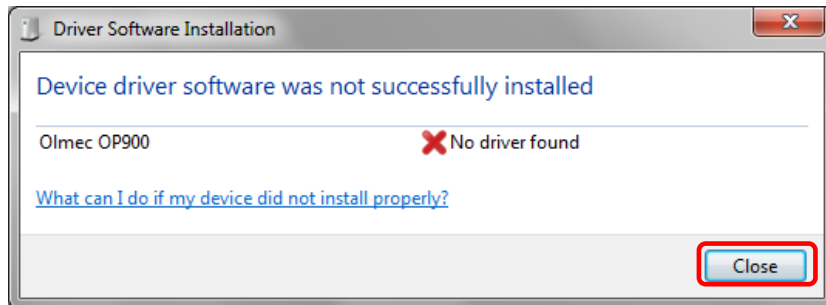


Fig 1.16 If the Driver is not installed successfully

1.4 Installing a Driver for an Unspecified Device

Before installing the driver package, connect the printer (with power ON) to the computer, to create an "Unspecified" device in the "Devices and Printers" window. Using this method, the printer driver can be installed as follows.

Also, when a driver is not installed correctly but the "Unspecified" device is created by the method of connecting a printer after installing the driver package of usual printer driver installation procedure, you can install the driver using the following method.

1. Installing the Driver Package

If the driver package has not been installed yet, follow the procedure shown in "1.2 Installing the Driver Package".

When the driver package has been installed, installation of the printer driver for the Unspecified device may be completed automatically.

2. Installing a driver for an Unspecified device

In the "Unspecified" device of the "Devices and Printers" window, do the right click of the "Color Printer", and click on the "Troubleshoot" from pull-down menu.

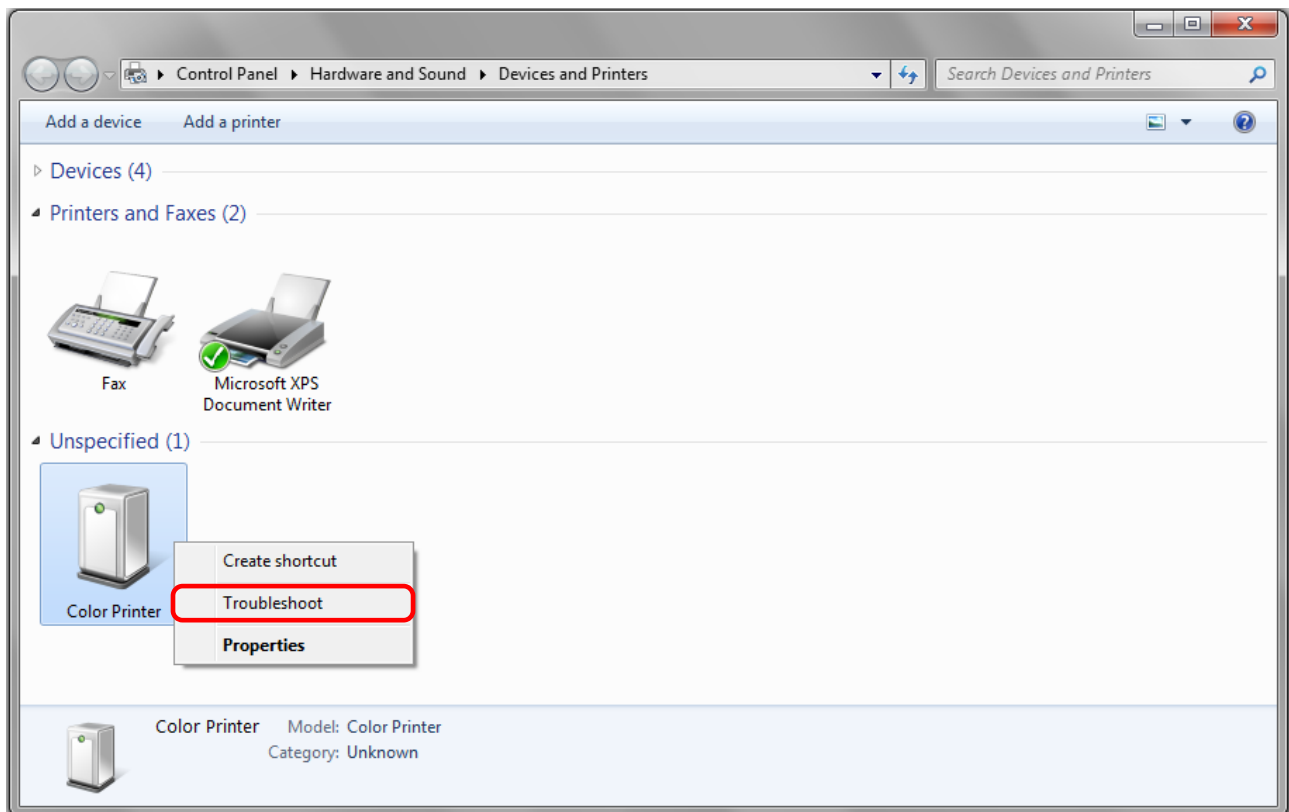


Fig 1.17 Photo Printer as an unspecified device

When the “Install a driver for this device” window appears, click on “Apply this fix”.
It will automatically search for the driver and installation is started.

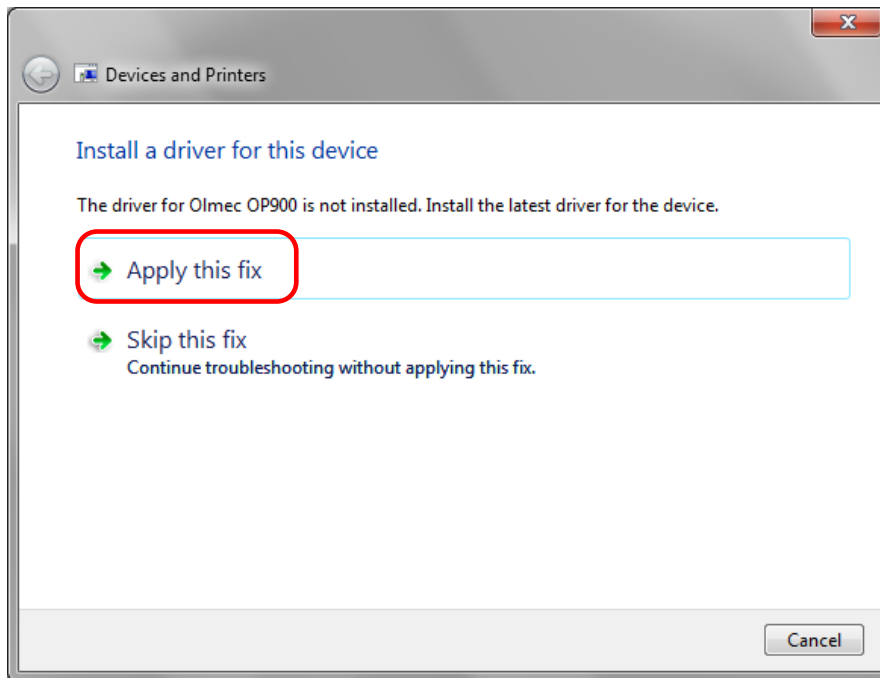


Fig 1.18 Applying the Fix

When the driver has been installed, “Troubleshooting has completed” will appear. Click on “Close the troubleshooter” to end the troubleshooting.

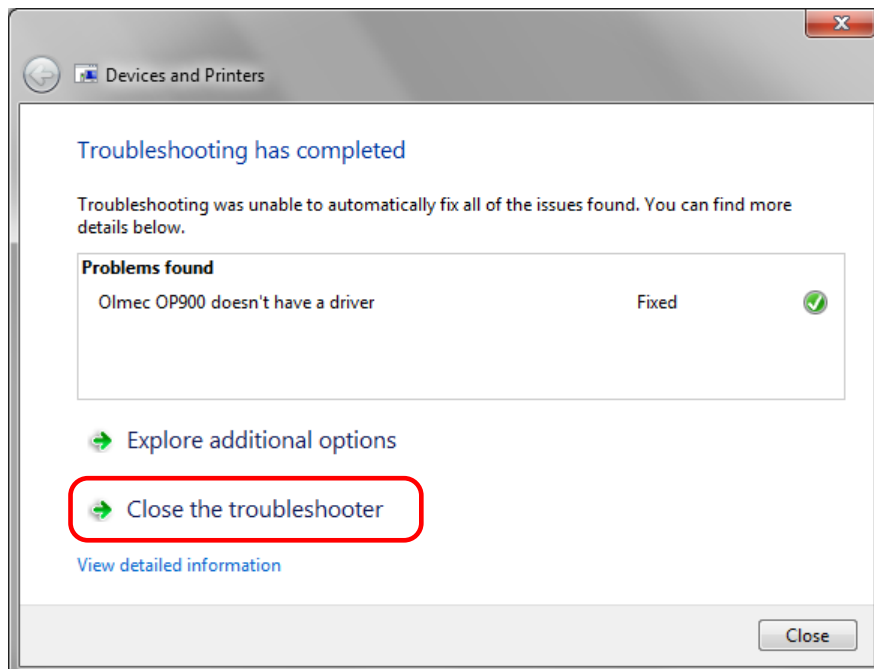


Fig 1.19 Completion of Troubleshooting

Check that the “Olmec OP900” is displayed in the “Devices and Printers” window.
Now, the OP900 Printer Driver installation is complete.

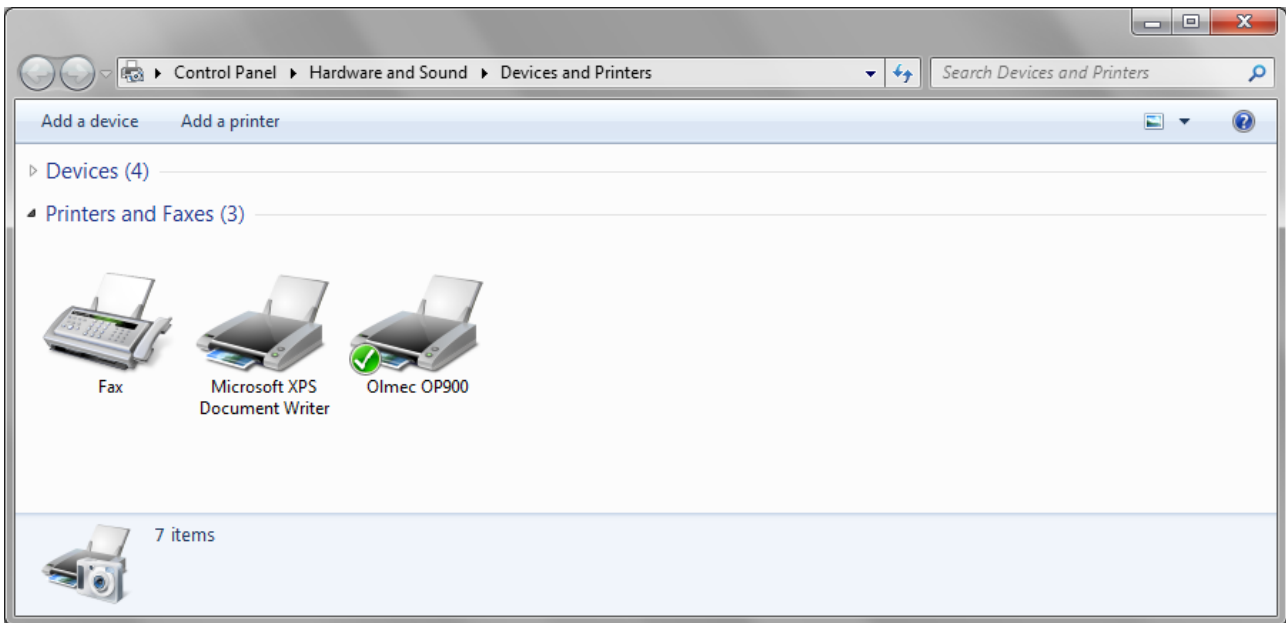


Fig 1.20 Devices and Printers

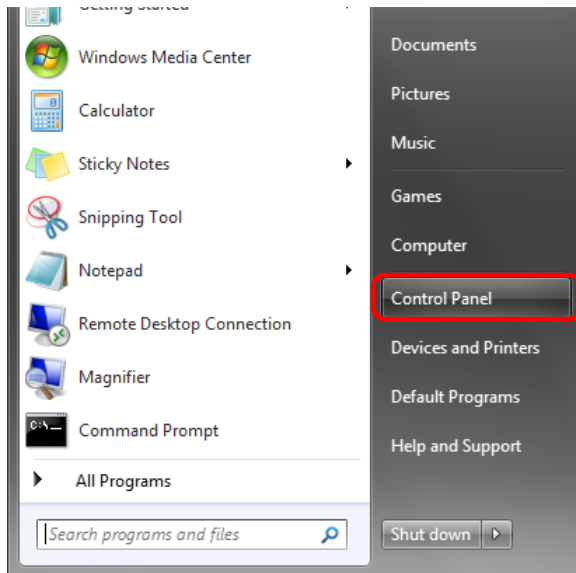
After installation of the printer-driver is complete, be sure to reboot the computer.

Chapter 2 Properties

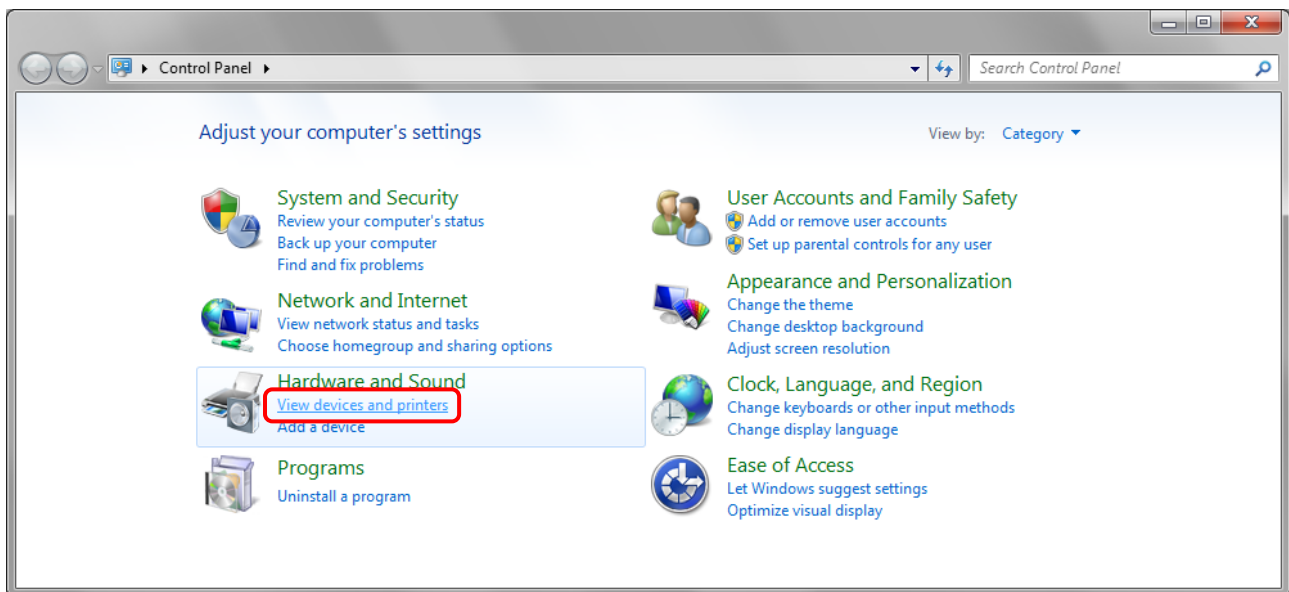
Various printer settings can be made using the OP900 Driver properties. As a rule, the printer settings should not be altered. Use the default settings present at installation. Alter paper-size settings at the Application side. Before operation, be sure to have a good understanding of the contents.

2.1 Opening Printer Properties

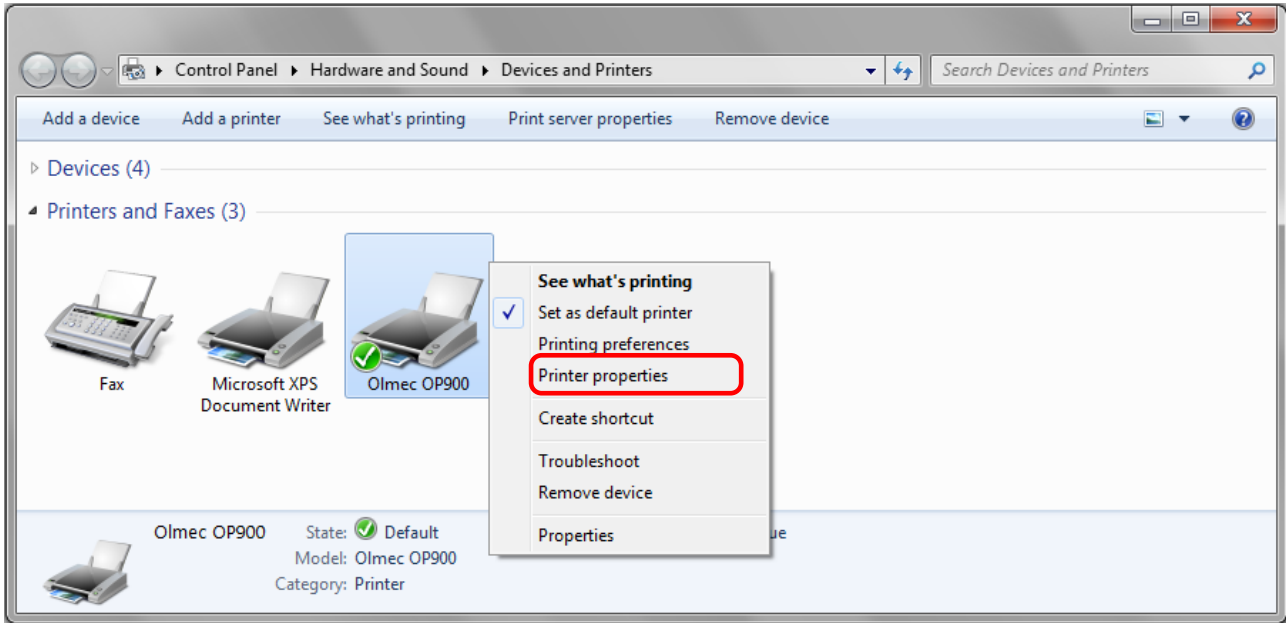
1. Click Start ⇒ Control Panel ⇒ open the control panel



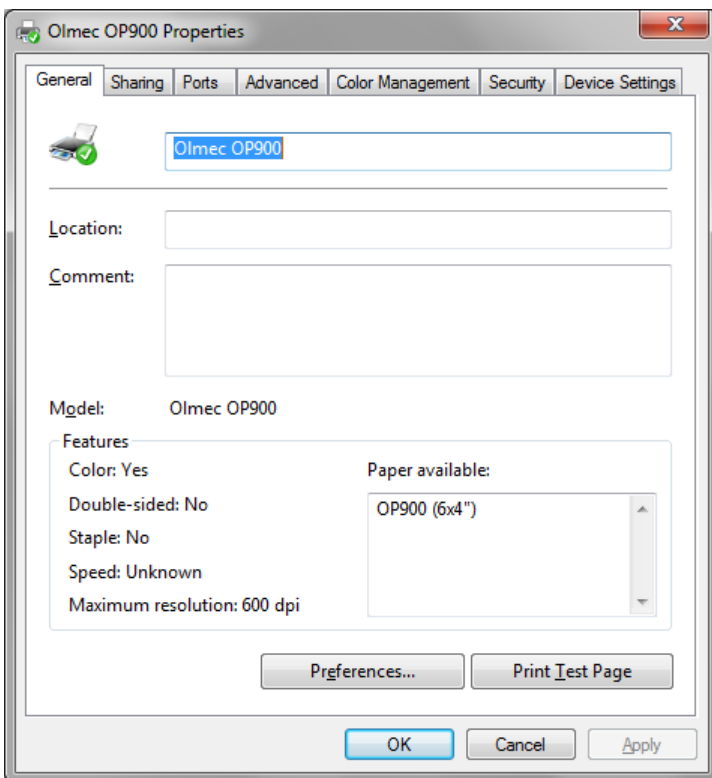
2. In the control panel, select View devices and printers ⇒ open the Devices and Printers window



3. Right-click on the OP900 icon, and from the pull-down menu select Printer properties ⇒ open the Properties window



4. The OP900 Properties window will appear.



2.2 Explanation of Print Setting Functions

From the Properties window, by selecting Printing Preferences you can make various print settings.

2.2.1 Layout

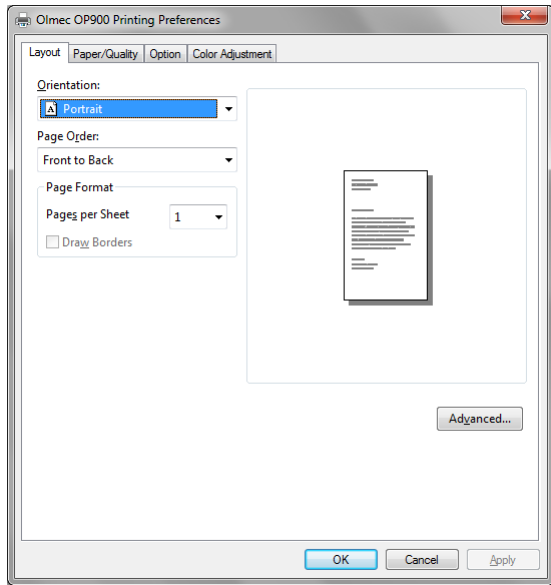
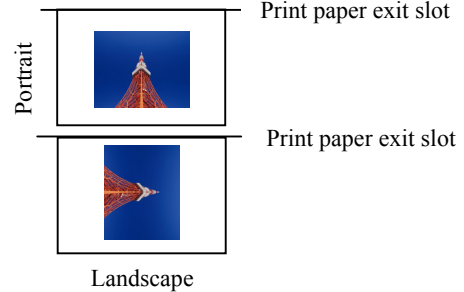


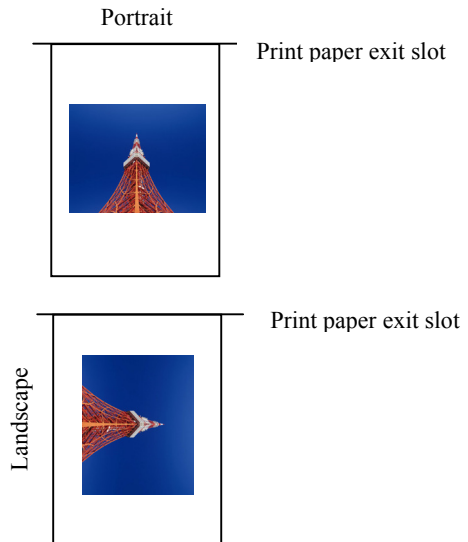
Fig 2.2.1 Layout tab

Output image depending on print direction

Ex.) For 6x4", 5x3.5"



For 5x7", 6x8", 6x9"



Print Orientation

Assign print orientation as vertical or horizontal.

Output images of the original image without rotation are shown at the right.

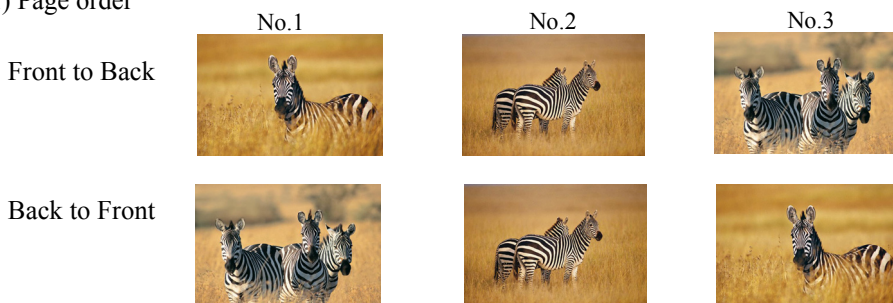


Original image orientation

Page Order

When printing multiple images in the application, you can set the order.

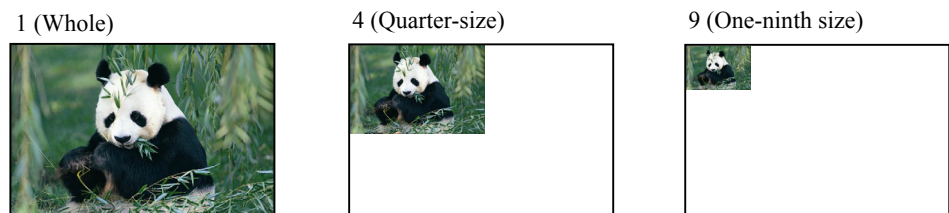
Ex.) Page order



Pages Per Sheet

Prints the designated fractional size.

Ex.) Fractional size



2.2.2 Advanced Options

By selecting [Advanced...] in the Layout window, various settings can be made using Advanced Options.

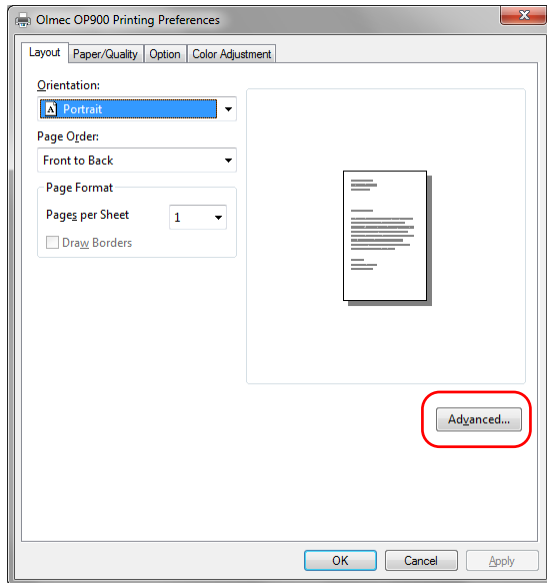


Fig 2.2.2.1 Advanced Settings

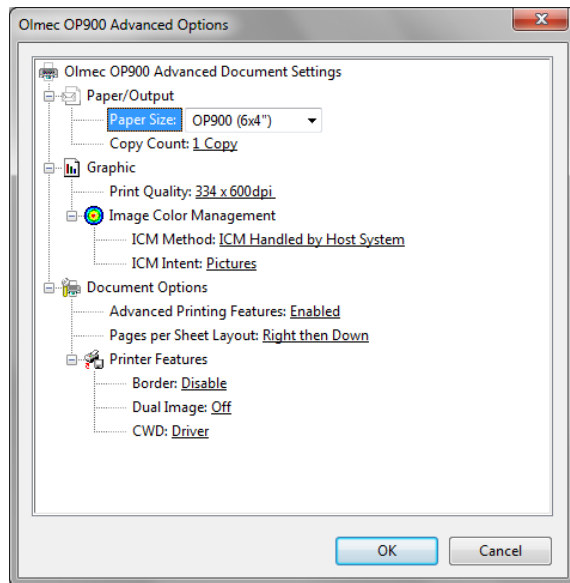


Fig 2.2.2.2 Advanced Options tab

Paper Size

You can designate the paper size. Please match the paper size to the media size with which the printer is equipped

Copy Count

You can designate the number of times an image will be printed.

Print Quality

You can designate the print quality. Please match the print quality to the printer settings.

ICM Method

ICM Method	Function
ICM Disabled	2.2.4 Synchronous with “Color Management: None” in paper option.
ICM Handled by Host System	2.2.4 Synchronous with “Color Management: ICM” in paper option. Performs color management with the driver.
ICM Handled by Printer	This is the same as setting “ICM Handled by Host System”.

ICM Intent

This designates the rendering method when using ICM. Always have the ICC profile for the OP900 set to “Picture”. Please do not use it at other settings.

Advanced Printing Features

Always have it set to “Enabled”. Please do not use it at other settings.

Pages per Sheet Layout

The layout direction of a picture is specified, when Pages per Sheet setting is multiple pages per sheet.

Border

Synchronous with the border option in the paper option.

DualImage

With the OP900, it is possible to split A5W(6x9), A5(6x8) media into 2 PC size images and print them. Dual image printing can be done under the following conditions.

1. A5W or A5 media is set in the printer.
2. The paper size setting in the printer driver is set to “PC”, and the dual image setting should be “ON”.
3. Multiple images are sent from the application.

Note) The dual image setting works on a job basis, so multiple pages can be printed in one job.

The printer will print 2 images at once, and the paper will be cut as it exits the printer.

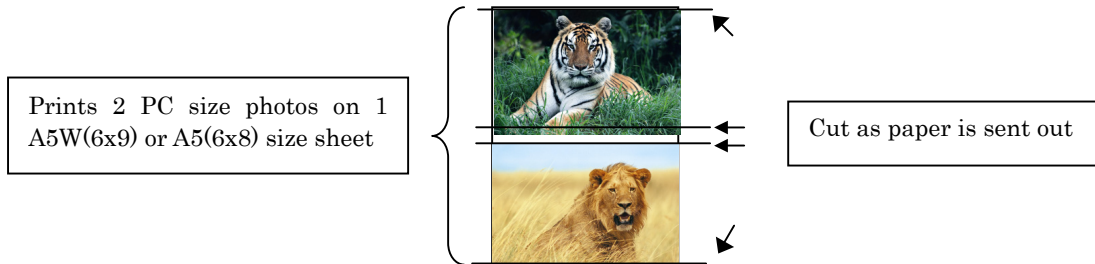


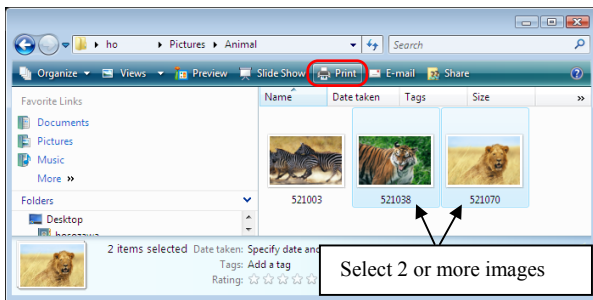
Fig 2.2.2.3 Dual Layout image

This takes place for each dual image. In the case of an odd number of images, the last image will come out as a PC size photo. However, an A5W or A5 portion of the ribbon will be used.

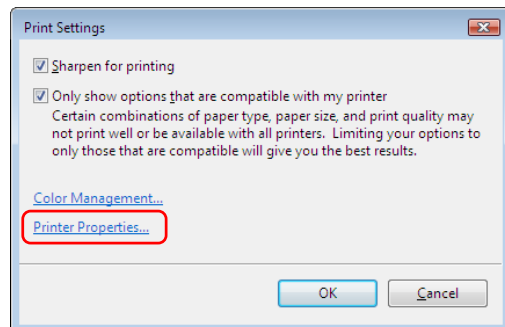
<Example of Application Use>

This is an example using Windows Explorer

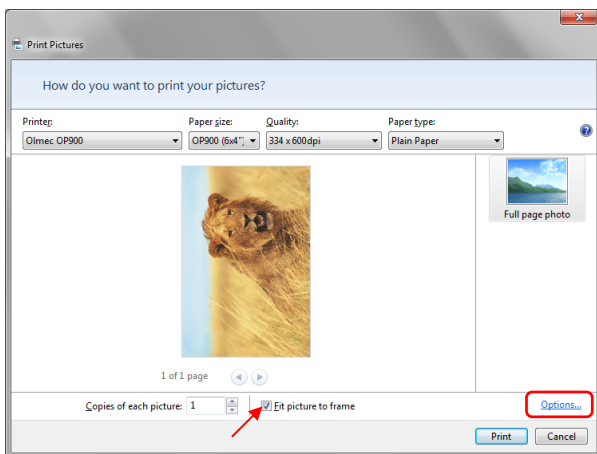
Step 1. Select 2 or more images⇒Click “Print”.



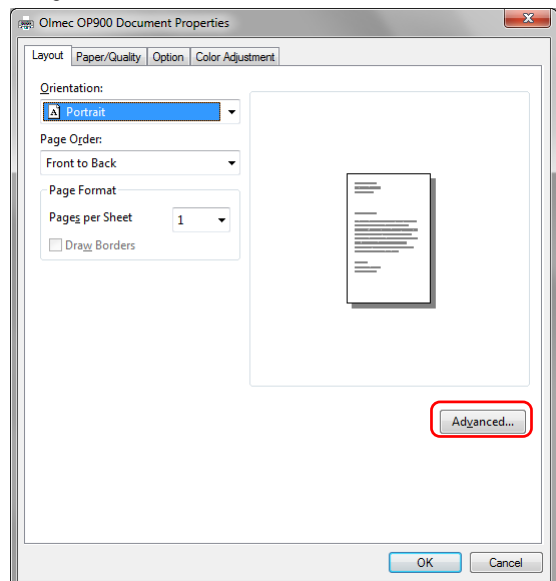
Step 3. Click on “Printer Properties...”.



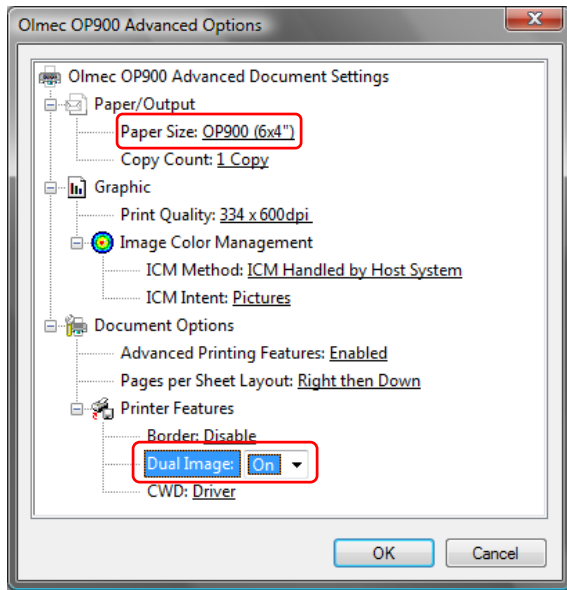
Step 2. Check “Fit picture to frame” and click “Options...”.



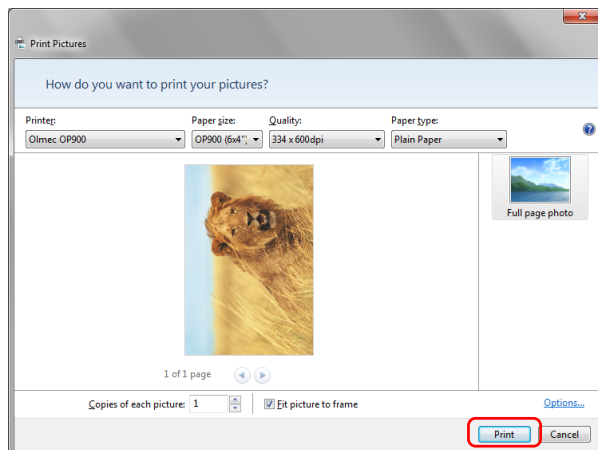
Step 4. Click on “Advanced”.



Step 5. Set the Paper Size to “PC”. and DualImage “ON” Then click “OK” on the windows from steps 4⇒3, returning to the window displayed in Step 2.



Step 6. Click on “Print”.



CWD (Control Data)

The CWD (control data) can be sent to the printer from the driver, or you can choose to use the control data in the printer.

Object of ICM	Function
Driver	Control data (CWD) is sent from the driver. Printer resolution and other parameters can be set from the driver. The control data is sent to the printer when the printer is turned ON, or at the first printing after the print quality resolution is changed. The control data is stored temporarily in the printer, and returns to the default values when the printer is turned OFF.
Printer	The printer’s control data is used. Control data is not sent from the driver. Select this when you want to use the printer’s control conditions. If the resolution setting at the printer and the driver’s print quality resolution don’t match, it won’t print.

2.2.3 Paper/Quality

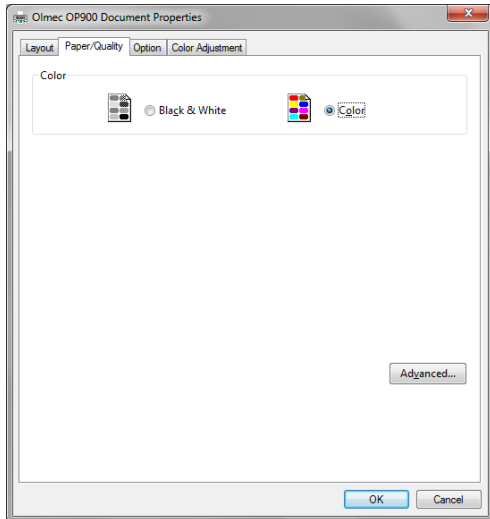


Fig 2.2.3 Paper/Quality tab

Color Please set to color print. Do not use for black and white printing.

2.2.4 Option

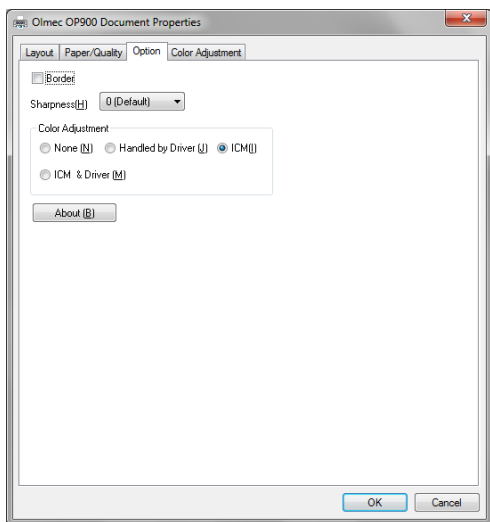


Fig 2.2.4.1 Paper option tab

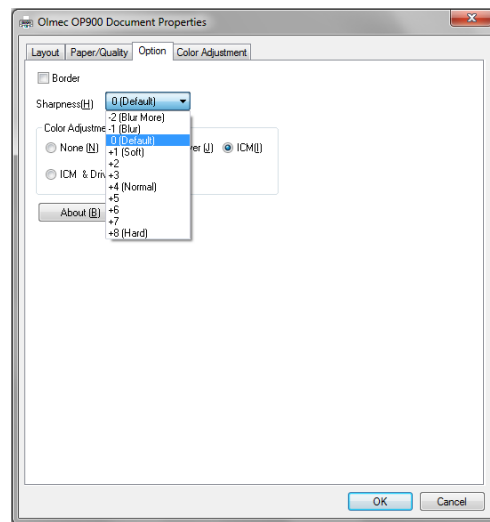


Fig 2.2.4.2 Sharpness setting

Border

Designates yes or no for border (check means with border). Synchronous with border in the Advanced Settings.

Sharpness

Processes for 11 sharpness levels(Fig 2.2.4.2). 0(Initial setting) means there is no sharpness processing. Minus(-) blurs the image, and plus(+) increases the sharpness.

Color Adjustment

None

Synchronous with the ICM Method in the Advanced Settings. Checking this item disables ICM and the Color Adjustment tab, and color management does not occur from the driver.

Handled by Driver

Checking this item disables ICM and 2.2.5 Color Adjustment is enabled. The adjustment values for gamma, brightness, contrast, and chroma are shown.

ICM

Synchronous with the ICM Method in the Advanced Settings (ICM Handled by Host System). Checking this item enables color management from the driver.

ICM & Driver

If you check this , ICM (color management) and color adjustment will be enabled.

About

Displays the driver version.

2.2.5 Color Adjustment

If you check Handled by Driver in [2.2.4 Option](#), the respective color adjustment values in the Color Adjustment tab are reflected in the image.

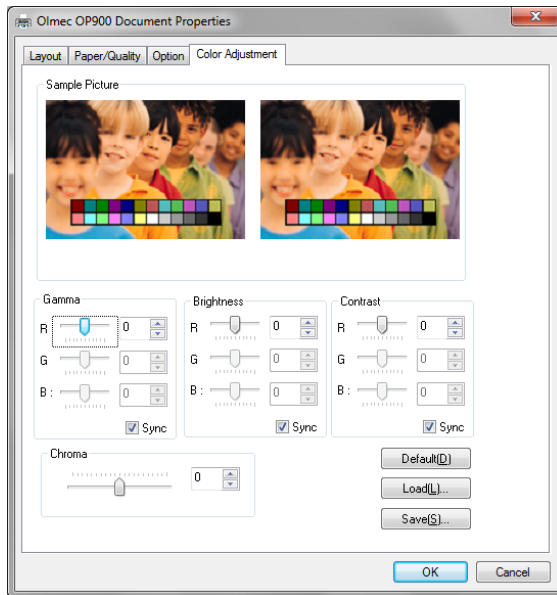


Fig 2.2.5 Color Adjustment tab

Setting ranges in the Color Adjustment tab are as follows:

Adjustment Item	Adjustment Value
Gamma	-100(dark) ~ 100(light) (0 means no adjustment, Gamma 2.0 ~ 0.5) Adjusts the density of the highlights in the image. The greater the gamma value, the brighter the highlights. Synchronous check box ON : Sets RGB at the same value OFF:Sets RGB at a different value
Brightness	-100(dark) ~ 100(light) (0 means no adjustment) Adjusts the brightness of the image. The larger the value, the greater the overall brightness of the image. Synchronous check box ON :Sets RGB at the same value OFF:Sets RGB at a different value
Contrast	-100(weak) ~ 100(strong) (0 means no adjustment) Adjusts the contrast of the image. The larger the value, the greater the contrast. Synchronous check box ON : Sets RGB at the same value OFF: Sets RGB at a different value
Chroma	-100(weak) ~ 100(strong) (0 means no adjustment) Adjusts the color saturation of the image.

2.3 Default Values for Various Settings

Default values for each option (at the time of installation) are shown below. If the printer driver does not work correctly after changing the options, please return the options to the default settings.

Tab	Options		Default	
Layout	Orientation		Portrait	
	Page Order		Front to Back	
	Pages Per Sheet		1	
Paper/Quality	Color		Color	
Option	Border		Disable	
	Sharpness		0 (Default)	
	Color Adjustment		ICM	
Color Adjustment	Gamma		0	
	Brightness		0	
	Contrast		0	
	Chroma		0	
Advanced (Click [Advanced] button of Layout tab)	Paper/Output	Paper Size	6 x 4"	
		Copy Count	1	
	Graphic	Print Quality		334 x 600dpi
		Image Color Management	ICM Method	ICM Handled by Host System
			ICM Intent	Pictures
	Document Option	Advanced Printing Features		Enable
		Pages per Sheet Layout		Right then Down
		Printer Features	Border	Disable
			Dual Image	Off
			CWD	Driver

Chart 2.3 Print Setting Default Values

2.4 Color Management

In [Color Management], this designates the color profile. Default at installation associates [OP900_xxxx]. xxx is a 4-digit number that refers to the version.

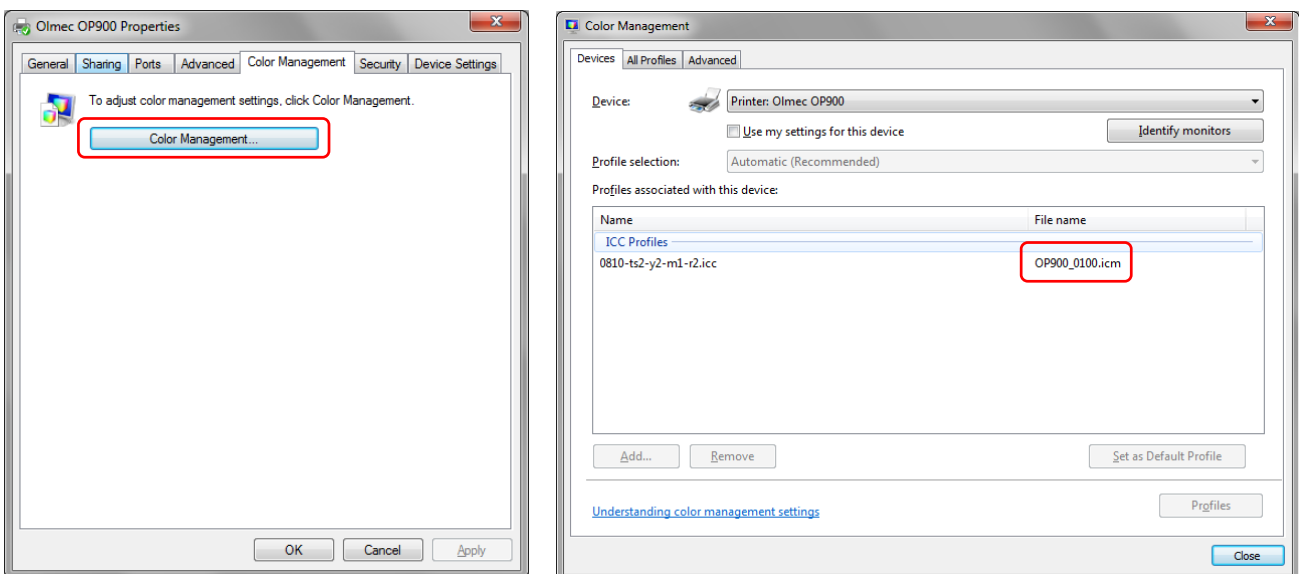


Fig 2.4 Color Management

2.5 Print Area

Depending on the paper size designated at the driver, the image size and dot count will be as follows.

Paper size	Print area size W(head width) x H(paper direction)	Image pixel size	
		334x334dpi	334x600dpi
OP900 (4.7x3.5")	121.5 x 92.0 mm	1598x1210 pixel	1598 x 2176 pixel
OP900 (5 x 3.5")	130.0 x 92.0 mm	1710x1210 pixel	1710 x 2176 pixel
OP900 (6 x 4")	155.0 x 105.0 mm	2038x1380 pixel	2038 x 2480 pixel
OP900 (4.7 x 7")	121.5 x 181.0 mm	1598x2380 pixel	1598 x 4276 pixel
OP900 (5 x 7")	130.0 x 181.0 mm	1710x2380 pixel	1710 x 4276 pixel
OP900 (6 x 8")	155.0 x 206.0 mm	2038x2710 pixel	2038 x 4870 pixel
OP900 (6 x 9")	155.0 x 232.0 mm	2038x3050 pixel	2038 x 5480 pixel
White border T/B	Top and Bottom each 4.5 mm	Top and Bottom each 60 pixel	Top and Bottom each 108 pixel
White border L/R	Left and Right each 4.5 mm	Left and Right each 60 pixel	Left and Right each 60 pixel

Chapter 3 Updating the Driver

In order to update the printer-driver, follow the steps shown below.

1. Driver Removal

- (1) Before removing the printer-driver, shut down all other applications. Also, in the “Devices and Printers” window, select the printer icon of the printer you want to remove, check the bottom of the window that there are no documents in queue, and start removal of the driver.

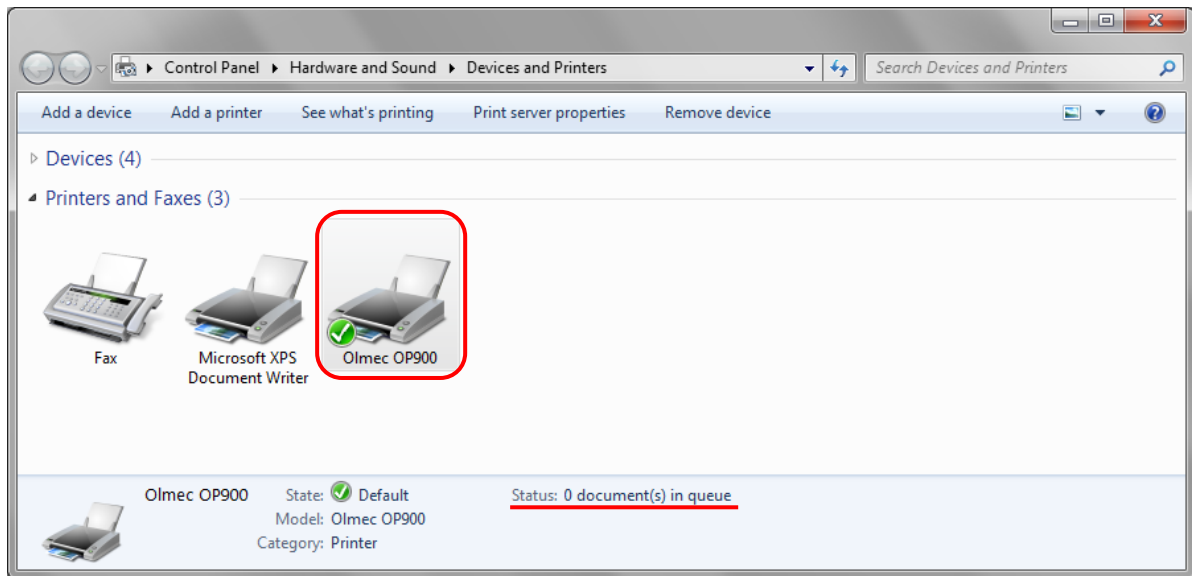


Fig 3.1 “Devices and Printers” window with the OP900 icon clicked

- (2) Select “Start”-“Control Panel”, and click on “View devices and printers” in the control panel. From the “Devices and Printers” window, select the OP900 printer, display the pull-down menu with the right click, and click on “Remove device”.

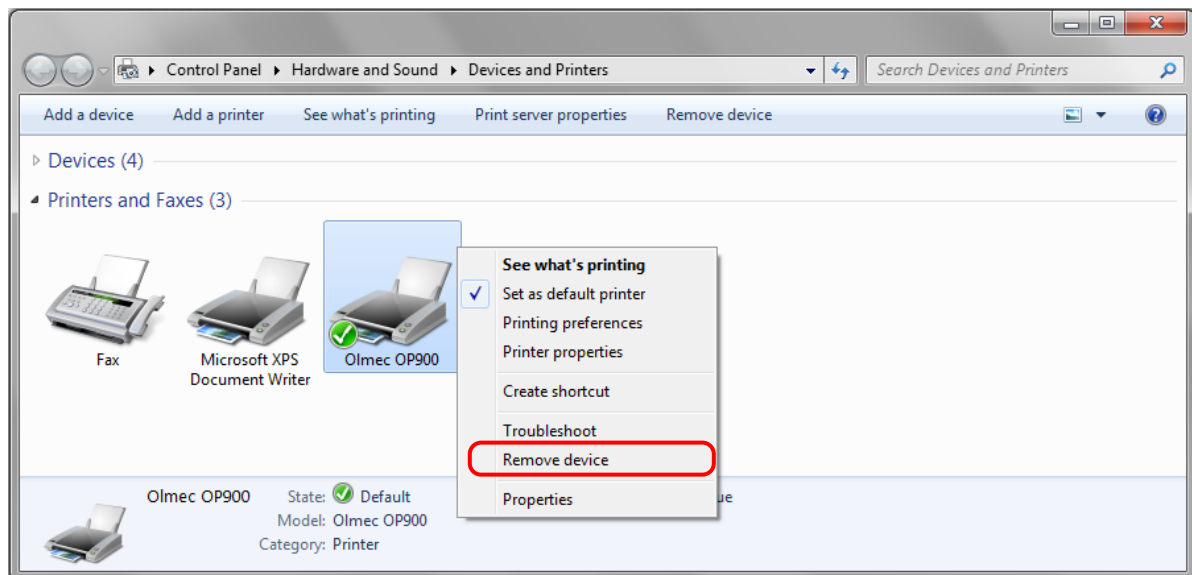


Fig 3.2 Devices and Printers window; OP900 right-clicked menu

(3) When “Are you sure you want to remove this device?” appears, click on “Yes”.

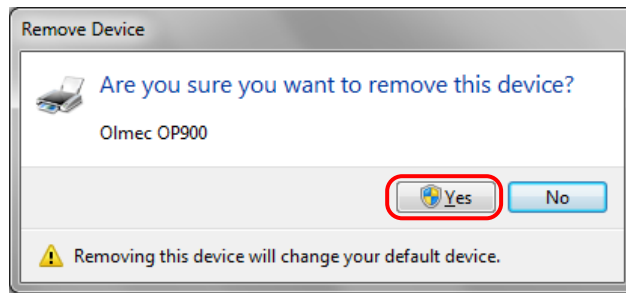


Fig 3.3 Remove device confirmation window

(4) After the OP900 printer has been removed, select another printer (for example: Fax), and click on “Print server properties” in the menu bar.

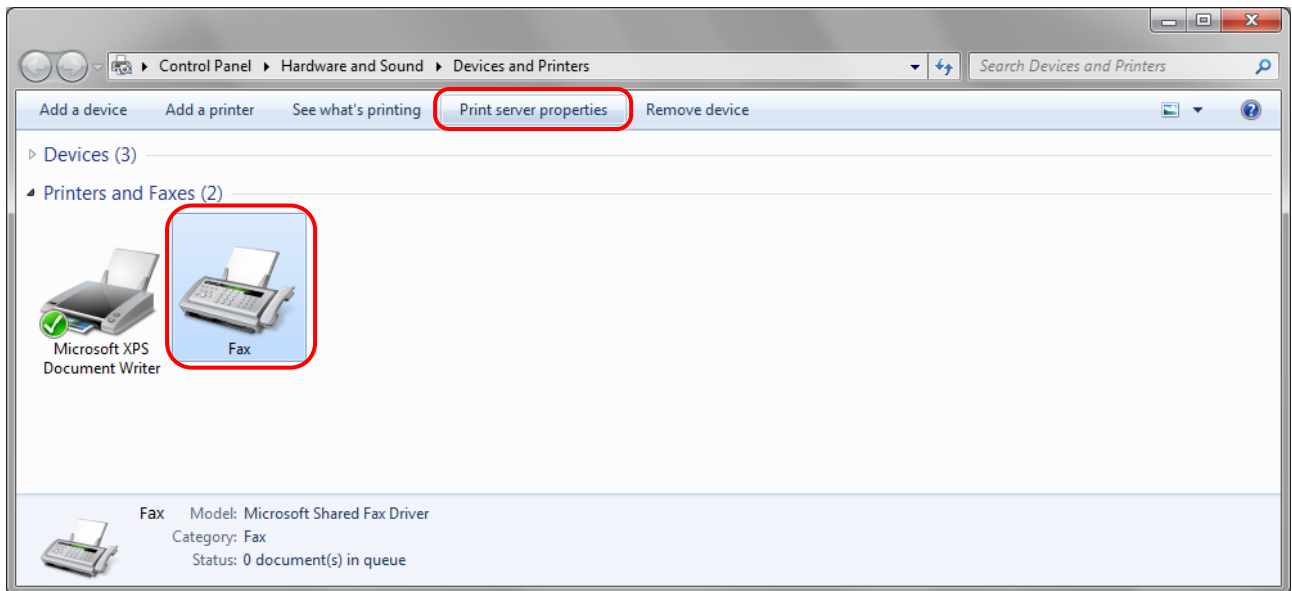


Fig 3.4 “Devices and Printers” window, showing the “Print server properties” menu

- (5) When the Print Server Properties window appears, click on the Drivers tab. From the list of installed printer drivers, select “Olmec OP900”, and click the “Remove” button.

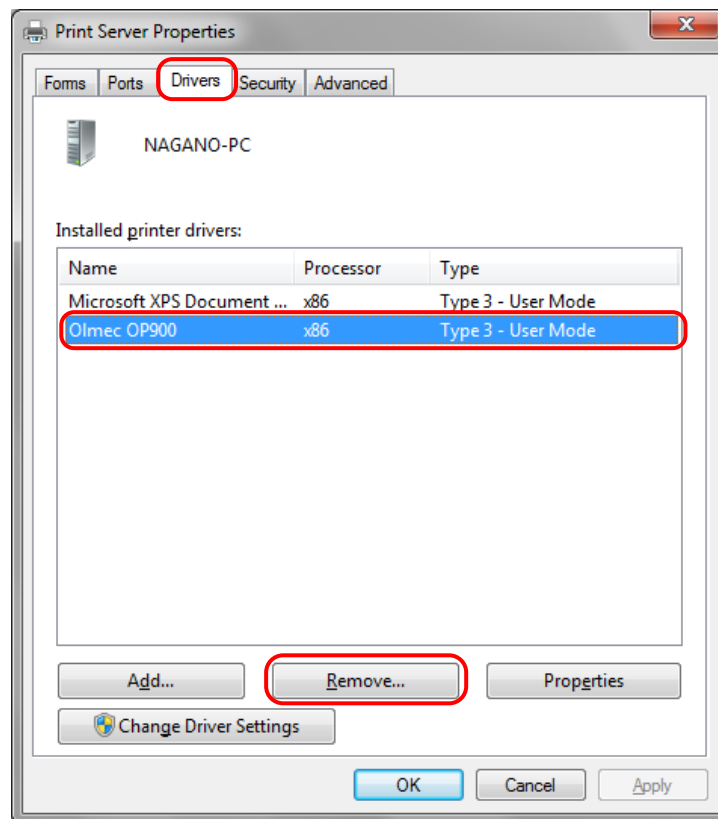


Fig 3.5 Print Server Properties window

- (6) When the Remove Driver and Package window appears, select “Remove driver only”, and click on the “OK” button. Removal of the driver package takes place in the next section “2. Uninstalling a Driver Package”.

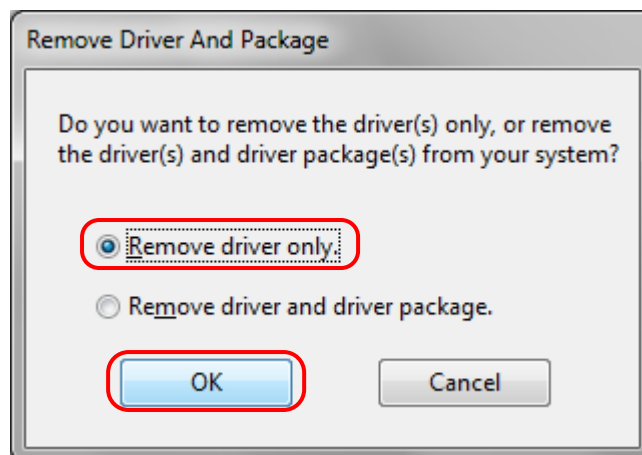


Fig 3.6 Remove Driver and Package window

(7) When the Print Server Properties confirmation window appears, click on the “Yes” button.

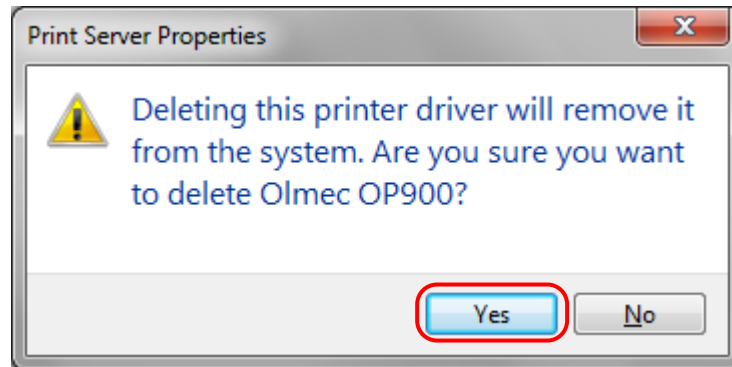


Fig 3.7 Print Server Properties confirmation window

(8) Using the Print Server Properties window, confirm that “Olmec OP900” has been removed, and click on the “Close” button. After removing the printer driver, uninstall the driver package.

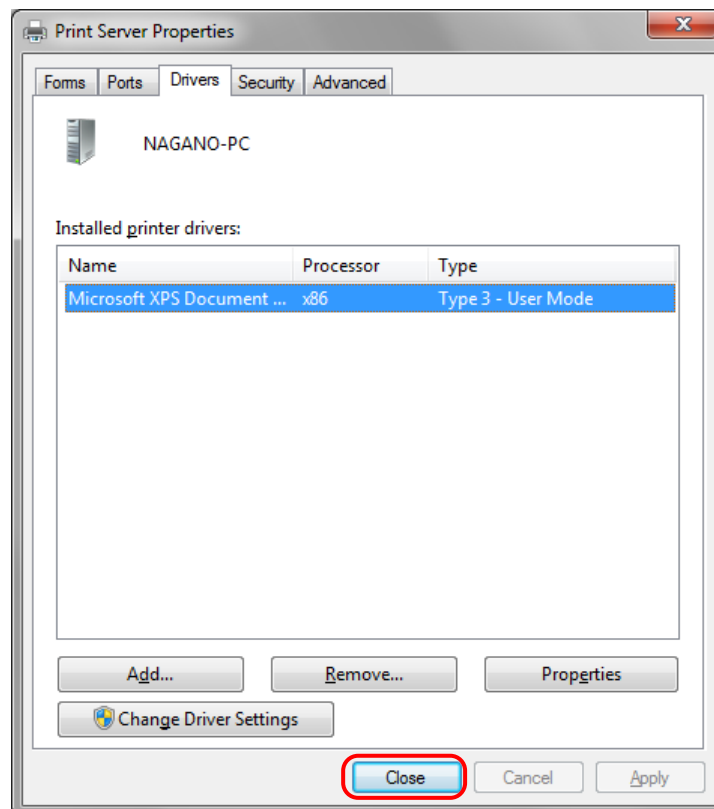


Fig 3.8 Print Server Properties window

2. Uninstalling a Driver Package

(1) Select “Start”, then “Control Panel”, and open the control panel. Click on “Uninstall a program” in the control panel.

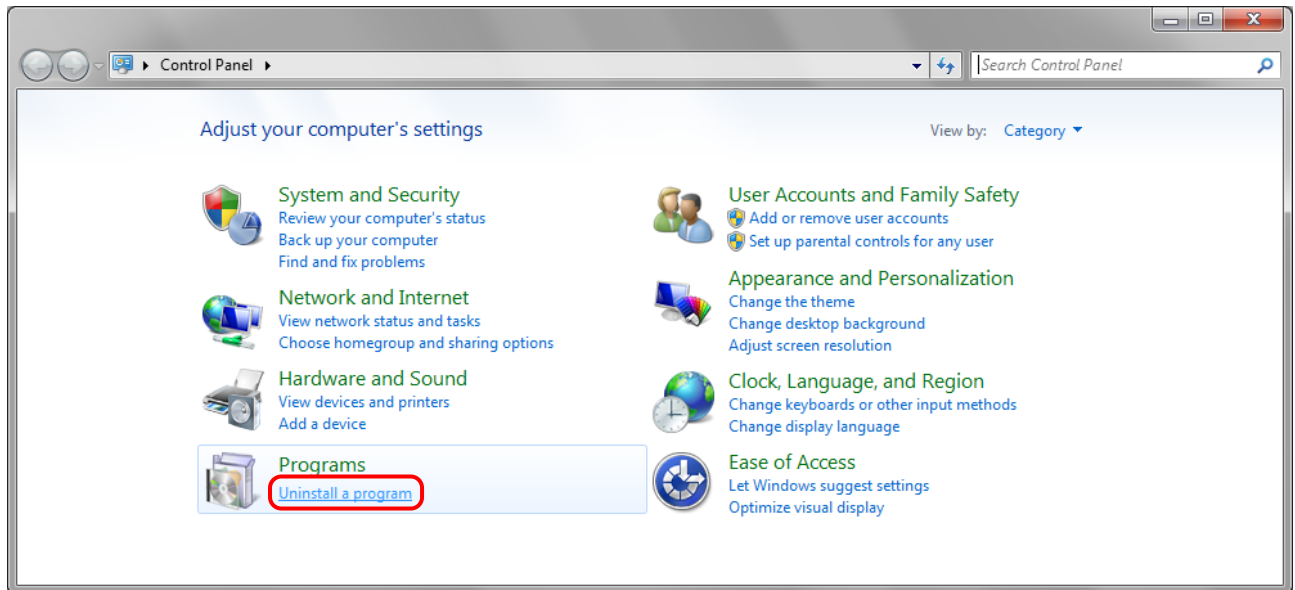


Fig 3.9 Control Panel

(2) When the “Uninstall or change a program” window appears, double-click on “Windows Driver Package – ICI Imagedata OP900 (mm/dd/yyyy x.x.x.x)” (mm/dd/yyyy = the date, x.x.x.x = the version).

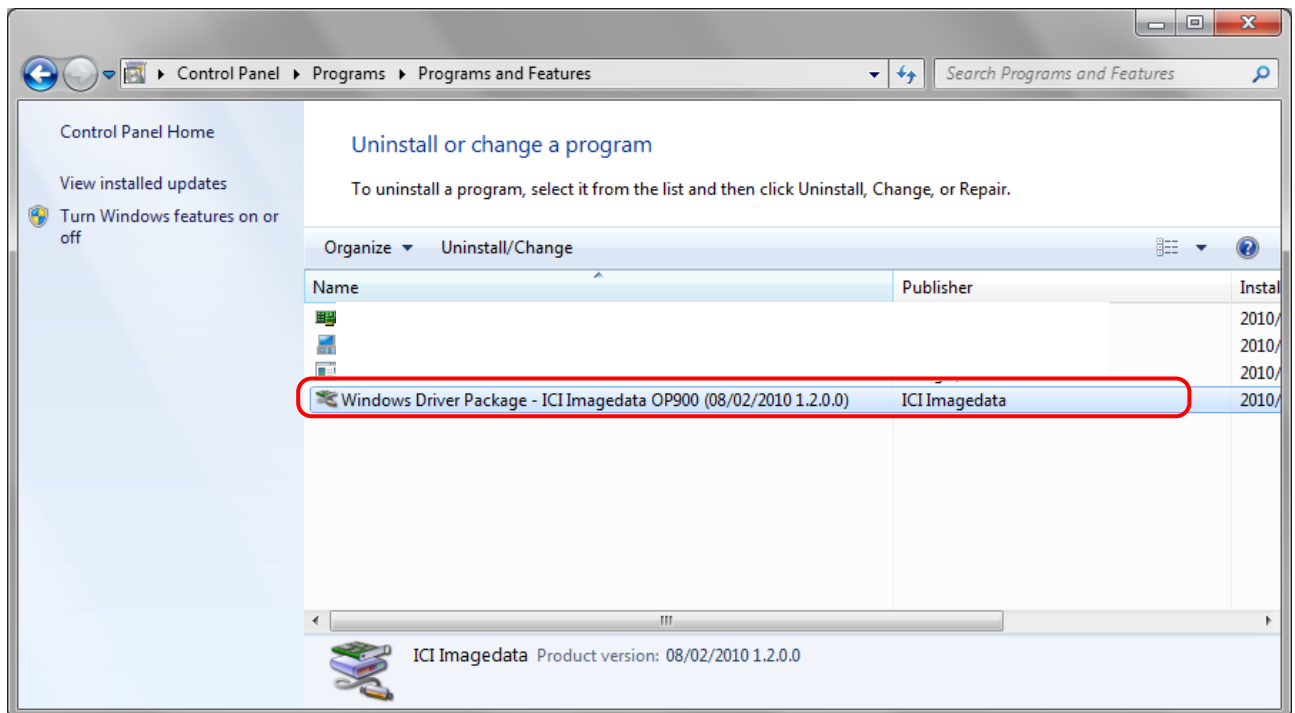


Fig 3.10 Uninstall a program

- (3) When the “Uninstall Driver Package” window appears, click on “Yes”.
The Uninstall will be completed.
After finished with uninstalling the driver package, reboot the computer.

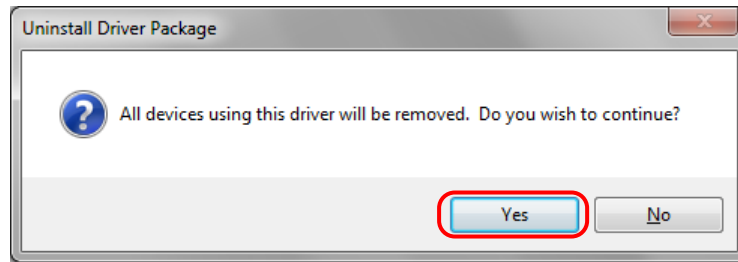


Fig 3.11 Uninstall confirmation window

3. Installing the printer-driver upgrade

After removing the printer and printer-driver, install the new printer-driver. For installation steps, please refer to Chapter 1 “Install”.

4. Rebooting the computer

After installation of the printer-driver is complete, be sure to reboot the computer.
(Do not print immediately after installation. First reboot the computer.)

Chapter 4 Driver Removal

For steps to remove the printer-driver, refer to Chapter3 “1. Driver Removal” and “2. Uninstalling a Driver Package”.