

PRO TREK Smart Quick Operation Guide



WSD-F20



WSD-F30

PRO TREK Smart

 Wear OS by Google

 **GO HARDER**
WITH A WEARABLE MAP

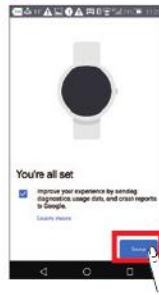
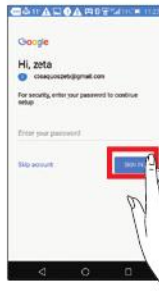


Getting Ready to Use the Product

Depending on factors such as differences in products and software versions, the screen displays and operations may differ from those shown in this Quick Operation Guide.



Pairing the watch with your smartphone



If a confirmation screen then appears,

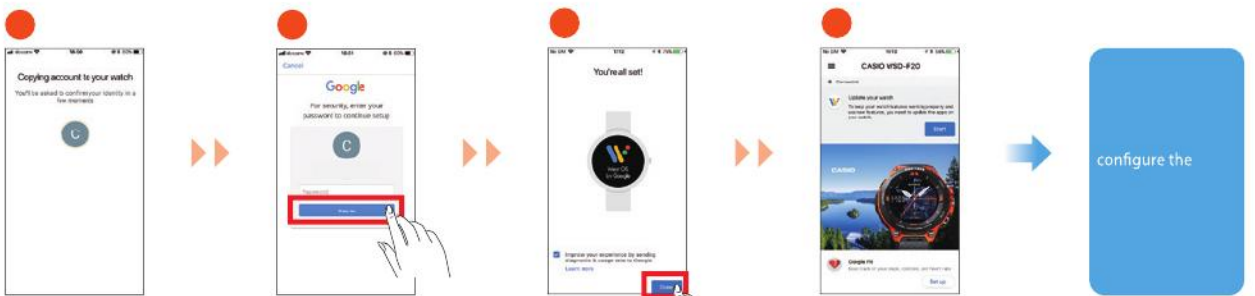


To ensure that the product is fully functional, configure the





Pairing the watch with your smartphone



* If a confirmation screen then appears,



Pairing the watch with your smartphone



Configure the location information settings in "



* Screens differ depending on the software version.

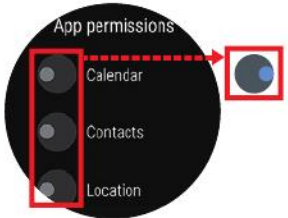


Pairing the watch with your smartphone



* Screens differ depending on the software version.

Apps & notifications



Saves information about all your daily workouts. Enable this setting to use the functions below.

- Activity Graph
- Steps and calories burned
- Smart MOMENT SETTER menu items

This function uses some user storage.

I agree

Cancel



Saves all info about your daily movements. The location storage interval is somewhat irregular.

This function uses some user storage. Increasing the recording frequency will run down the battery.

Every 1 minute

Every 6 minutes

OFF

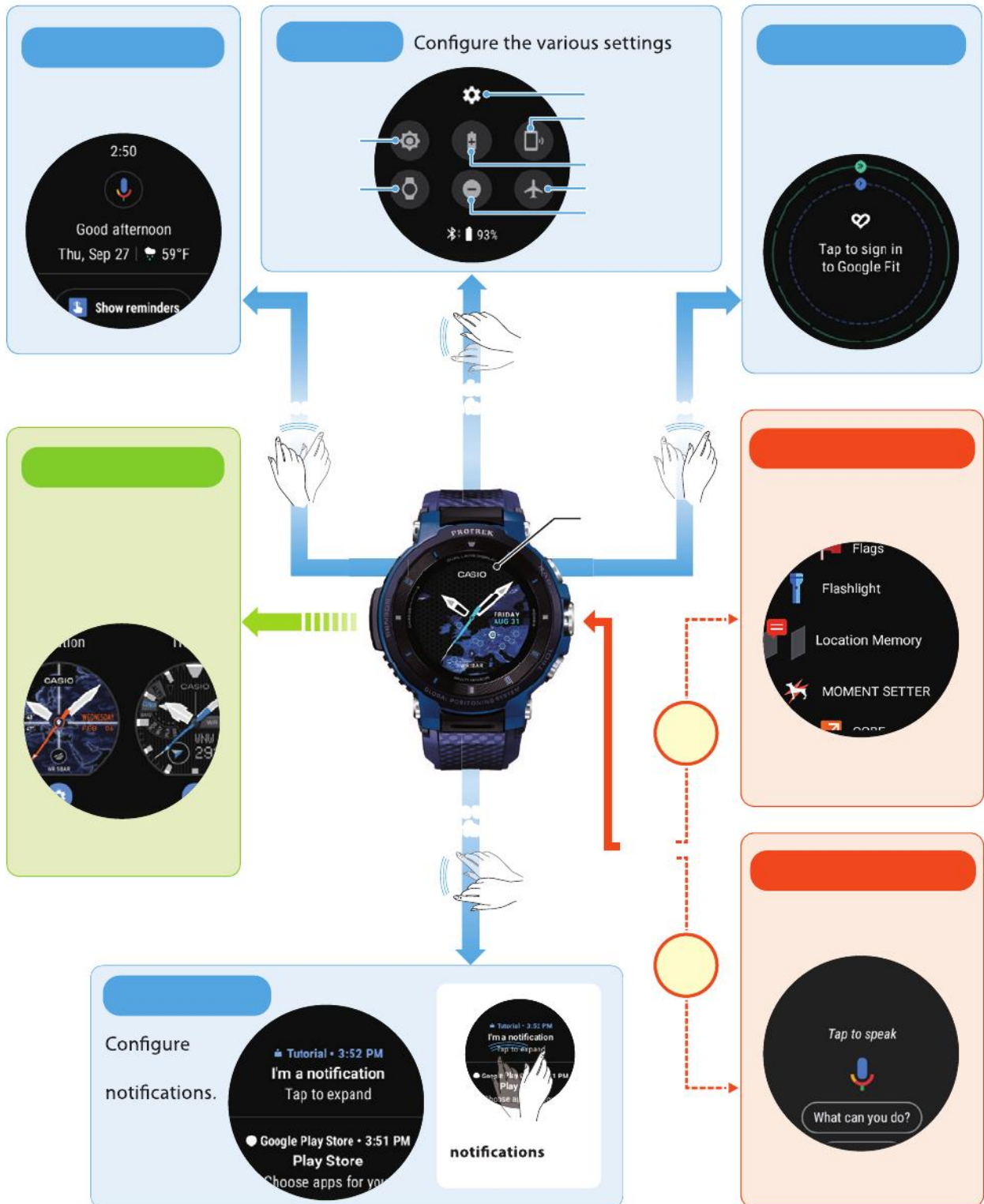
Main Screen Transitions

by swiping its touchscreen with your finger.



Main Screen Transitions

You can operate this smartwatch by swiping its touchscreen with your finger.



Launching/Adding apps

Launching an app



With a watch face

holding your finger



Adding an app

Procedure from the smartphone



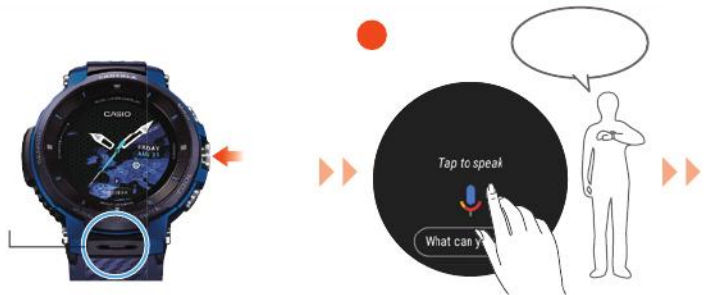
Procedure from the watch



Basic voice operations



To set an alarm <Only one alarm can be set at 7:00 am>



“, you must first go to



The supported functions differ

the set time is reached



Changing/Adding original watch faces

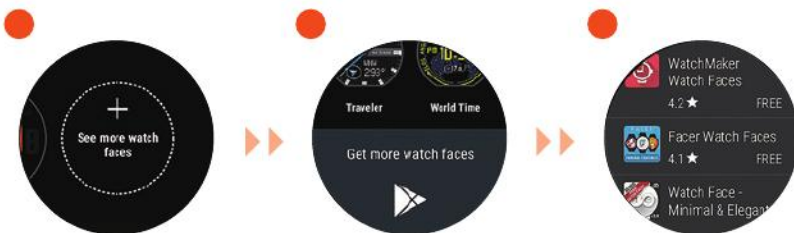
Original watch faces



Changing the watch face



Adding a watch face (on the watch)

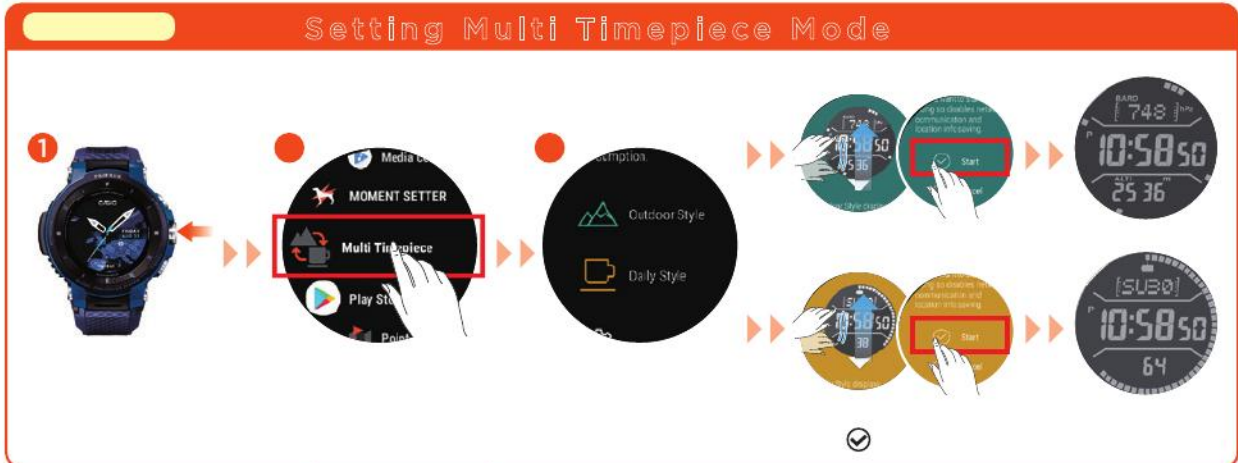


Adding a watch face to "Favorites" (on the watch)



SU30
10:58
50

Timepiece Mode Multi Timepiece Mode



Functions available without a smartphone connection

and the music files are already installed
