

SEIKO WATCH CORPORATION  
Copyright©2019 by SEIKO WATCH CORPORATION

Printed in Japan

SEIKO

简体中文 繁體中文



[REDACTED]

[REDACTED]

[REDACTED]

[REDACTED]

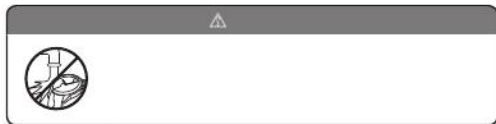
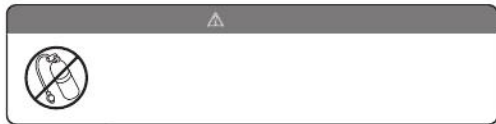
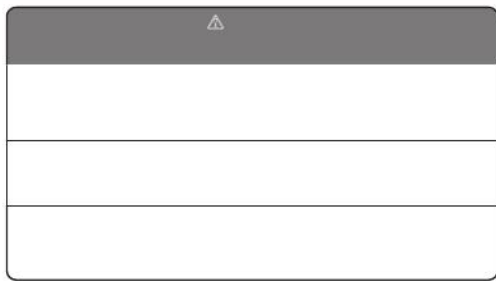
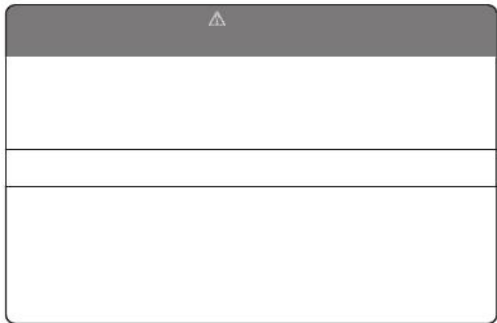
[REDACTED]

[REDACTED]

[REDACTED]

[REDACTED]

[REDACTED]



**CAUTION****Do not turn or pull out the crown when the watch is wet.**

Water may get inside of the watch.

\* If the inner surface of the glass is clouded with condensation or water droplets appear inside of the watch for a long time, the water resistant performance of the watch is deteriorated. Immediately consult the retailer from whom the watch was purchased or SEIKO CUSTOMER SERVICE CENTER.

**Do not leave moisture, sweat and dirt on the watch for a long time.**

Be aware of a risk that a water resistant watch may lessen its water resistant performance because of deterioration of the adhesive on the glass or gasket, or the development of rust on stainless steel.

**Do not wear the watch while taking a bath or a sauna.**

Steam, soap or some components of a hot spring may accelerate the deterioration of water resistant performance of the watch.

- **Reception Level Indication Function**..... The movement of the seconds hand indicates the radio signal reception level during radio signal reception attempts.  
→ P.71 (Only manual reception)
- **Display Function of Radio Signal Reception Results**..... The movement of the seconds hand indicates radio signal reception results (Yes/No).  
→ P.27
- **Solar Charging Function**..... A solar cell underneath the dial converts any form of light into "electrical energy" to charge it. Once fully charged, the watch continues to run for approximately 9 months.  
→ P.40
- **Energy Depletion Forewarning Function**..... The movement of the seconds hand indicates that the battery should be charged.  
→ P.42
- **Power Save Function**..... This watch is equipped with a function which can suppress energy consumption when it is left without receiving an adequate light source for a certain length of time.  
→ P.43
- **Automatic Hand Position Alignment Function**..... When the hand positions display an incorrect time as a result of external influences such as magnetism, the watch automatically corrects the hand misalignment.  
→ P.81

**Characteristics**

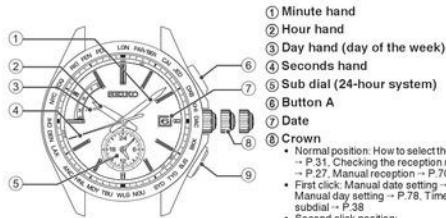
This solar-drive and radio-controlled watch is equipped with a world time function.

- The time in each region of the world can be displayed by selecting the time zone.
- This watch displays the precise time by receiving radio signals conveying time information.
- This watch can receive radio signals from Japan, China, U.S.A., Germany, and the UK.
- Two sets of time displays are provided to indicate the local time in two different time zones at the same time.

■ **World Time Function**..... The time in each region of the world can be displayed by selecting the time zone.  
→ P.29

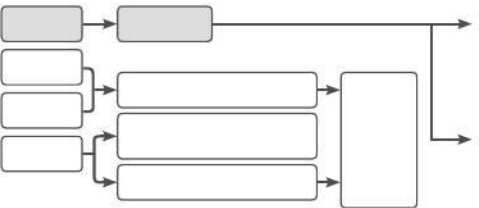
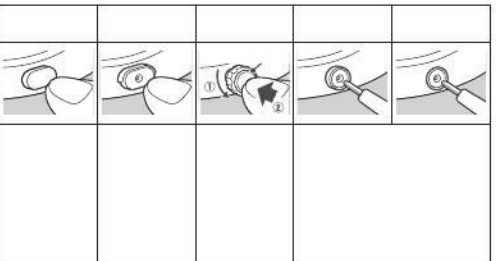
■ **Dual Time Display**..... In addition to the main time display, the time in another region can be displayed in the 24-hour indication format by the sub dial located at the 6 o'clock position.  
→ P.37

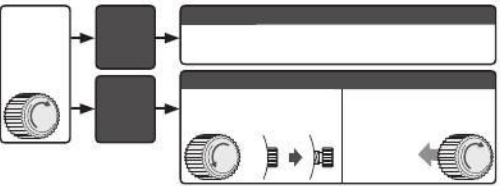
■ **Radio Signal Receiving Function**..... The watch maintains the precise time by automatically receiving radio signals on official standard frequencies. Manual reception of radio signals is also possible. This can receive radio signals from Japan (2 stations), China, U.S.A., Germany, and the UK. (Select the transmitting station in the world time function.)  
→ P.17

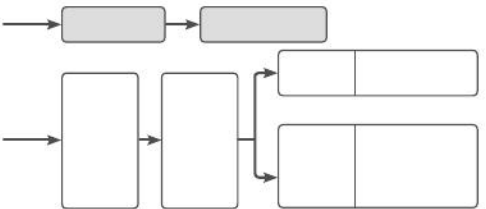
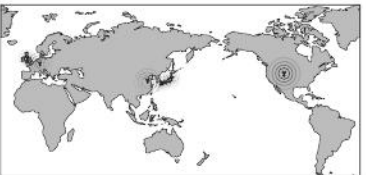
**Names of the parts and their functions**

- ① Minute hand
- ② Hour hand
- ③ Day hand (day of the week)
- ④ Seconds hand
- ⑤ Sub dial (24-hour system)
- ⑥ Button A
- ⑦ Date
- ⑧ Crown
  - Normal position: How to select the time zone → P.31, Checking the reception result → P.27, Manual reception → P.70
  - First click: Manual date setting → P.75, Manual day setting → P.78, Time setting for subdial → P.38
  - Second click position: Manual time setting → P.73, Reset the system → P.94
- ⑨ Button B → P.13

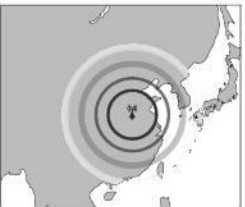
\* The operation method of the button varies with the functions being used. Follow the instructions of each section of this manual.





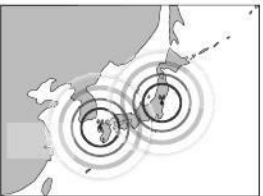
HOW TO SET THE TIME (RADIO SIGNAL RECEPTION)



HOW TO SET THE TIME (RADIO SIGNAL RECEPTION)

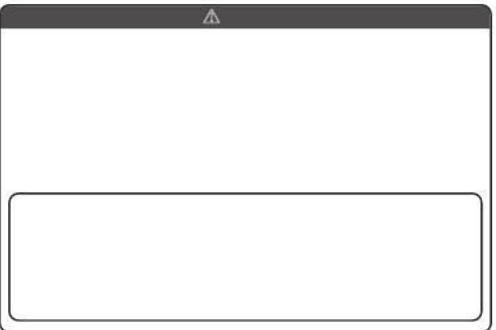
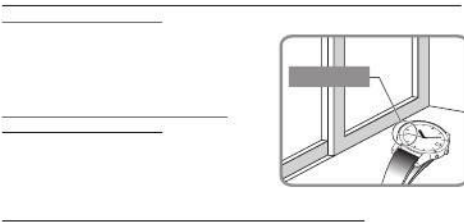
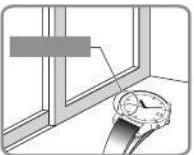
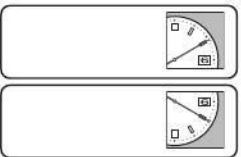


HOW TO SET THE TIME (RADIO SIGNAL RECEPTION)



HOW TO SET THE TIME (RADIO SIGNAL RECEPTION)





---



---



---




---



---



---

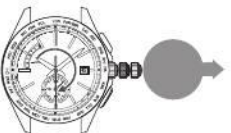
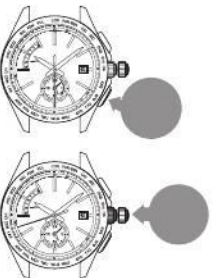



---



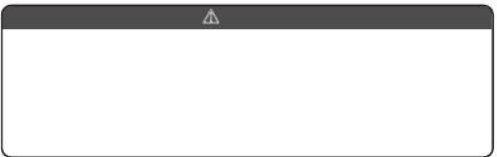
---



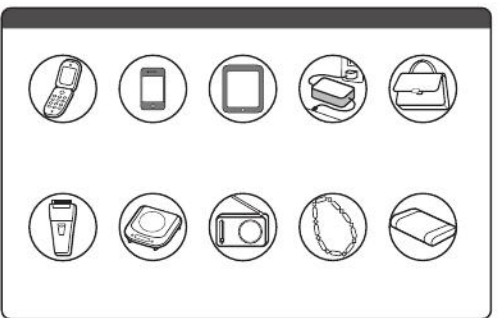




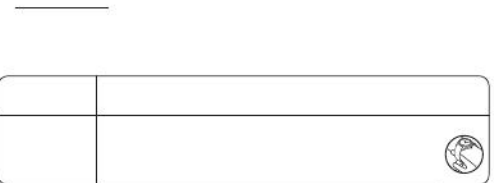
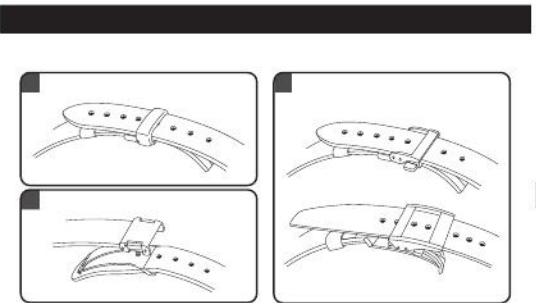
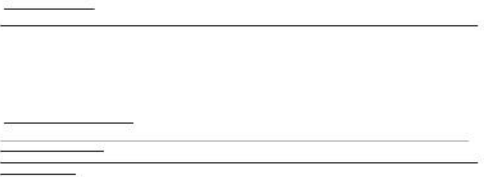


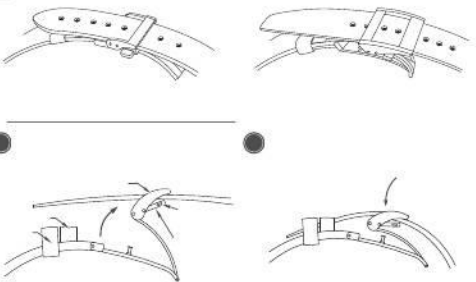
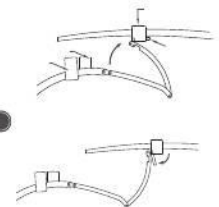
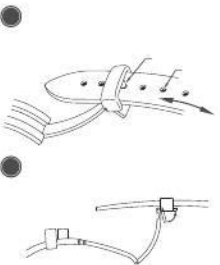
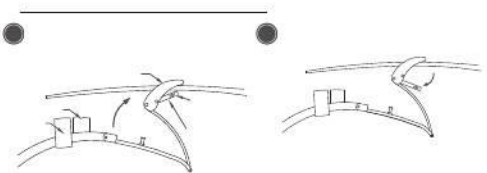
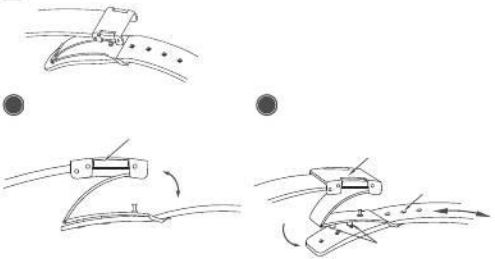


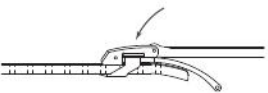
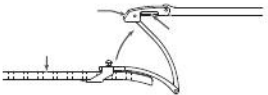
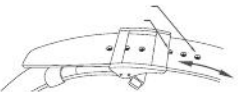
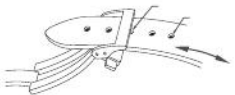
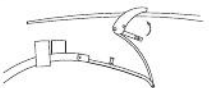
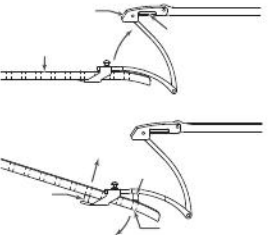
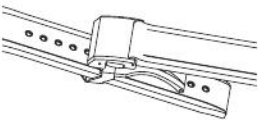
		⚠
( )		

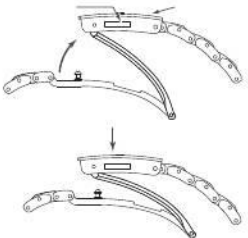
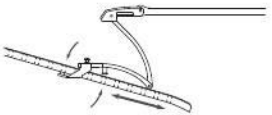
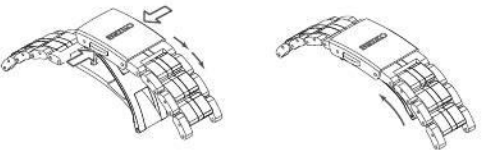
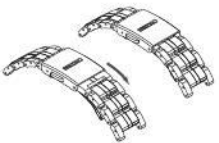



		⚠
C		

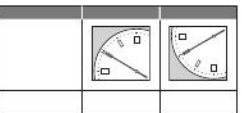








\_\_\_\_\_



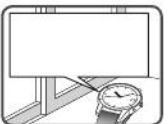
\_\_\_\_\_

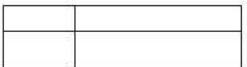
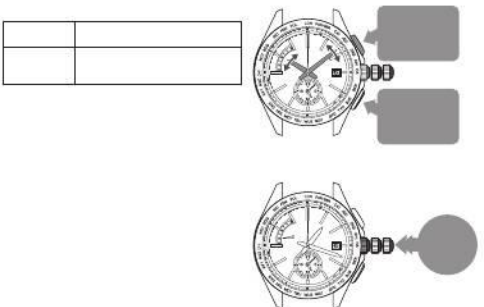
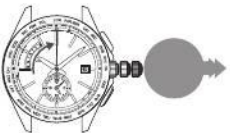
\_\_\_\_\_

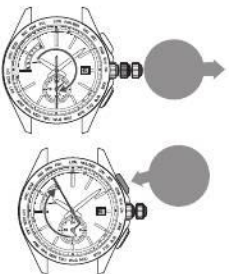
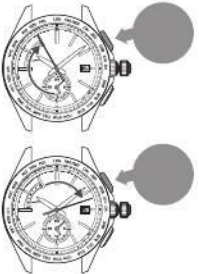
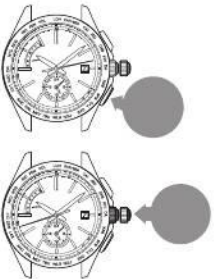
\_\_\_\_\_

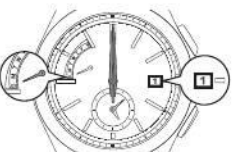
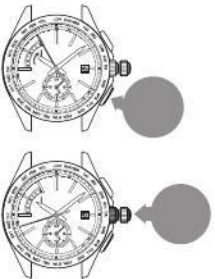


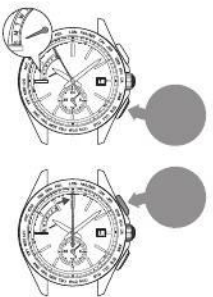
\_\_\_\_\_



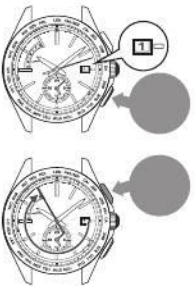















TROUBLESHOOTING



TROUBLESHOOTING



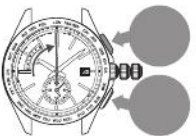
TROUBLESHOOTING



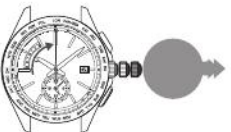
TROUBLESHOOTING


TROUBLESHOOTING


TROUBLESHOOTING



TROUBLESHOOTING



TROUBLESHOOTING

