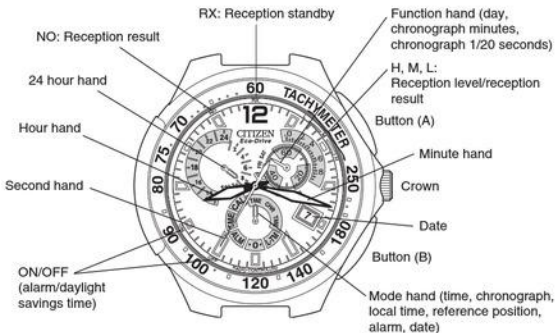


ManualsLib.com



* The illustrations shown in this manual may differ from the actual watch you have purchased.

■ This watch is a radio wave watch that receives the standard time radio wave transmitted in Germany ■

This radio wave watch is equipped with a regular automatic reception function that sets the time and date by automatically receiving radio waves at 3:00 AM or 4:00 AM, and a free reception function that allows the time to be set arbitrarily at any time by receiving radio waves.

· This watch is unable to receive radio waves of countries other than Germany.

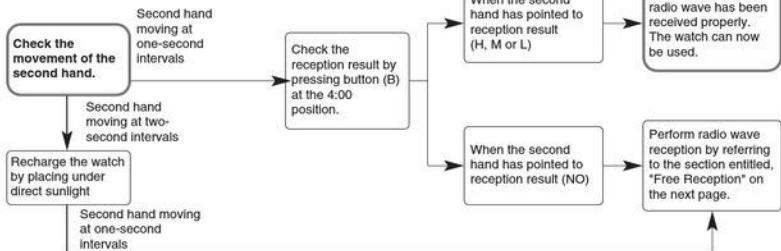
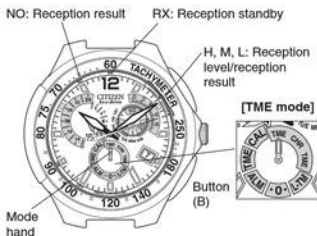
■ Please use this watch after charging sufficiently by placing in light ■

If the second hand of the watch is moving at two-second intervals while the watch is in use, this indicates that the watch is insufficiently charged. Use the watch after first recharging by referring to the section entitled, "15. General Reference for Charging Times of Solar-Powered Watches".

Since it may be difficult for light to shine on the watch as a result of being covered by clothing during the winter months in particular, it is recommended to charge the watch by exposing to direct sunlight once a month. To ensure that your watch is used comfortably, it is recommended to try to keep the watch fully charged at all times.

■ Please confirm the following before using the watch ■

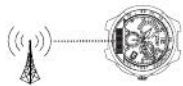
* Set the mode hand to the TME mode.



(The mode can be switched by pulling the crown out to Position 1. Set the mode hand to one of the three locations of the TME mode. Return the crown to its original position after switching the mode.)

Please confirm the following before using the watch

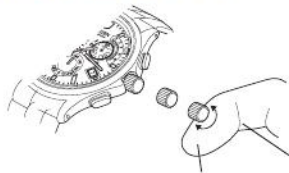
ManualsLib.com



ManualsLib.com

ManualsLib.com

[ManualsLib.com](https://www.ManualsLib.com)



ManualsLib.com



ManualsLib.com

ManualsLib.com



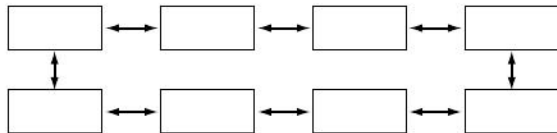
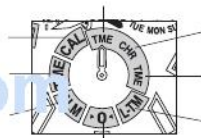
ManualsLib.com

ManualsLib.com



ManualsLib.com

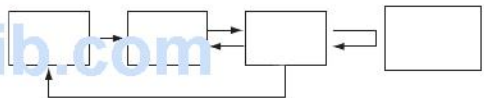
ManualsLib.com



ManualsLib.com



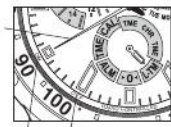
ManualsLib.com



ManualsLib.com



ManualsLib.com



ManualsLib.com

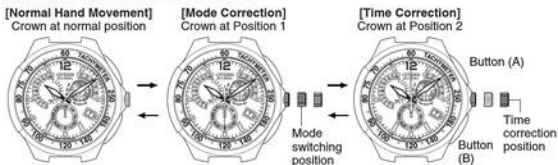


10. Manually Setting the Time and Daylight Savings Time

- The time can be set manually when radio waves are unable to be received.
- Daylight savings time is switched on or off automatically when radio waves have been received. Furthermore, remove the watch from your wrist before receiving radio waves to ensure that the time is set correctly.

A. Setting the Time

(The same time is displayed at the three locations of the TME mode. It is only necessary to set the time at one of these locations.)

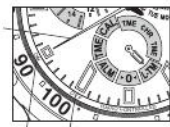


<Time Correction Procedure>

Pull the crown out to Position 1 and turn to align the mode hand to [TME] (time).

- (1) Pull the crown out to Position 2 (time correction position).
 - The second hand turns continuously and stops at the daylight savings time ON or OFF position.
- (2) Press button (B) for about 2 seconds.
 - When button (B) has been pressed for 2 seconds or more, the second hand advances (clockwise direction) to the 0 seconds position. Release your finger from button (B) once the second hand has stopped at the 0 seconds position.
- (3) Turn the crown to align the minute hand, hour hand and 24 hour hand at the current time.
 - ① Turning the crown to the right (by one click) causes the minute hand, hour hand and 24 hour hand to advance by one minute.
 - ② Turning the crown to the left (by one click) causes the minute hand, hour hand and 24 hour hand to go back by one minute.
 - Turning the crown continuously (rapidly by two clicks or more) causes the minute hand, hour hand and 24 hour hand to move continuously.
 - Turn the crown to the left or right to interrupt continuous movement of the hands.
 - Check AM and PM with the 24 hour hand to set the time correctly.
- (4) Return the crown to the normal position in synchronization with a telephone time signal or other time service. This completes the time correction procedure.

ManualsLib.com



ManualsLib.com

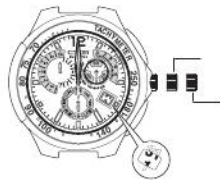




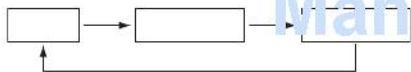
ManualsLib.com

ManualsLib.com

ManualsLib.com



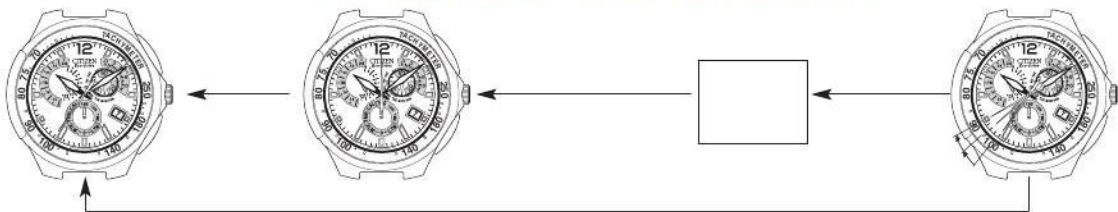
ManualsLib.com




ManualsLib.com



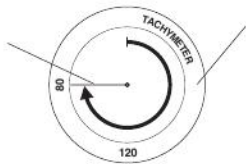
ManualsLib.com





ManualsLib.com

ManualsLib.com



ManualsLib.com

MantalsLib.com



ManualsLib.com

ManualsLib.com

ManualsLib.com