



Riiver

Integritas. Invenio. Innovatio.

Before using this watch

Protective stickers

Be sure to remove any protective stickers that may be on your watch (case back, band, clasp, etc.). Otherwise, perspiration or moisture may enter the gaps between the protective stickers and the parts, which may result in a skin rash and/or corrosion of the metal parts.

Charging your watch

Charge the built-in secondary battery using the special battery charger to use this watch.
For details, see "Quick start guide" and "Charging cord" provided with the product.

Component identification



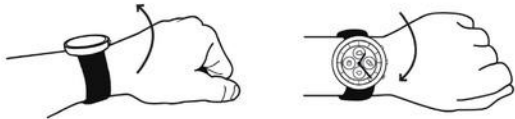
- The illustrations in this instruction manual may differ from the actual appearance of your watch.

About the display of the watch

This watch is equipped with an electronic paper display. Owing to the display, the watch can always indicate various information with little consumption of power reserve. On the other hand, unlike an ordinary LCD, indication is not always renewed.

To see current total steps or other real-time data, you need to renew indication intentionally.

Renewing indication on the display



Turn your wrist wearing the watch quickly to move the hands and renew indication on the display.

- Try the twist again if the hands do not move.

Turning on the light



Tap the center of the display twice to turn on the light.

- The light is turned off automatically without any operation.
- You can change the setting not to turn on the light on the watch. For details, see "Settings on the watch body" (→ page 6).

Indicating notifications



Press and hold the lower right button (A) of the watch to indicate notifications on the display of the watch.

- For details of notifications, see "Setting notification" (→ page 15).

Hiding information on the display



You can hide information on the display by pressing and holding the upper right button (C) of the watch.

- You can also hide the information through the settings of the watch. For details, see "About the menu on the watch" (→ page 18).

Before connecting with a smartphone

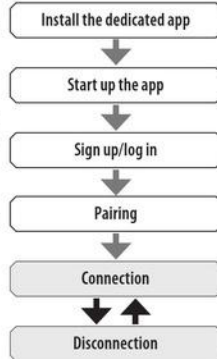
You must install the dedicated app "CITIZEN CONNECTED" on your smartphone and start it to make pairing between the phone and the watch to connect them.

The flow of connection is as follows.

- This watch communicates with smartphones through Bluetooth® Low Energy power-saving communication technology.

- The Bluetooth® word mark and logos are registered trademarks owned by Bluetooth SIG, Inc.
- Google, Wear OS by Google, Google Play and Google Play logo, Google Fit, Google Assistant, Google Calendar, Gmail, Android and Android Go Edition, Android One, Google Pixel, Google Nest Learning Thermostat are trademarks of Google LLC.

- IOS® is a trademark or registered trademark of Cisco in the U.S. and other countries and is used under license.



Requirements for connection

Android	Android OS 7.0 -
iPhone	iOS 15.0 -
Bluetooth®	Bluetooth smart compatible/ 4.2 Low Energy

- You cannot install the dedicated app when your smartphone is not compatible with it.
- The app may not be warranted to work correctly even when your smartphone fulfills requirements.
- Update of the dedicated app may be ceased after the end of production of the watch.

Actual screens and/or indication of the dedicated app may differ from those on this manual depending on your usage conditions and/or changes of specifications at update of the app.

In that case, follow instructions on the actual screen of the app.

Execute pairing with the smartphone

Execute pairing at first when connecting the watch and your smartphone.

- Unique pairing information is saved on the watch and smartphone as pairing is executed.
- Make an account at the startup of the dedicated app. An e-mail address which can be used for e-mail reception is required for making an account.
- Keep the mail address and password for the account in case they are required.

Executing pairing

- For pairing, you have to operate both the watch and the smartphone.
- Charge the watch and the smartphone sufficiently beforehand.
- Turn on Bluetooth® and function(s) related with location information on your smartphone.

- 1 Download the dedicated app "CITIZEN CONNECTED" at an app site and install it.



- 2 Start the dedicated app.

- Keep the app screen displayed until pairing is finished.

- 3 Tap [HYBRID].

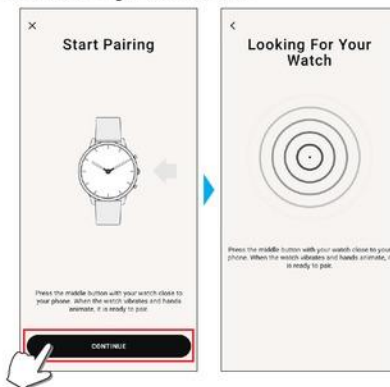


- 4 Make an account.



- Proceed to authentication after making an account. Authentication number is sent to the mail address you entered here.
- Tap [LOG IN] if you had logged out without executing pairing after making an account before.
- Once signed up, the status (login status) is kept regardless whether the app is activated or deactivated.

- 5 Press the right middle button **B** and tap [CONTINUE] on the screen of the app as the [Start Pairing] screen is shown.



- 6 Tap [THIS IS MY WATCH].

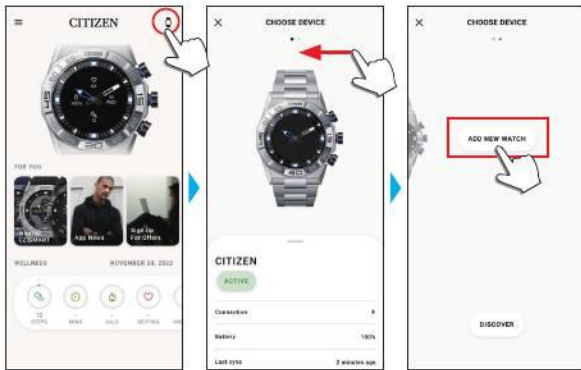
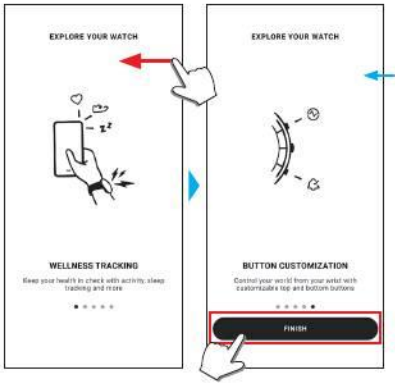


- The watch displayed on the screen may look different from the actual one you use.
- Tap [I DON'T SEE MY WATCH] when not only its color but whole appearance looks different from yours.
- When update of the watch has started, wait until it is finished.

- 7 Press the middle right button **B** of the watch within time limit.



Pairing starts.





Settings on the watch body

You can execute settings for the watch and utilize its various functions only by the watch itself.

- Some settings and functions are not available without connection between the watch and the smartphone through the dedicated app.

We introduce settings on the watch body here.

- See "About the menu on the watch" (→ page 18) for other functions.

1 Press the middle right button **B** of the watch.

The hands of the watch point one of the function icons on the display.



- [Home] is pointed immediately after indication.
- The indication automatically returns to normal indication in 3 minutes without executing any operation.

2 Press the lower right button **A**.

The hands of the watch point the [Settings] icon.



- In this time, pressing the lower right button **A** of the watch moves the hands clockwise to point each function icon one by one. Pressing the upper right button **C** of the watch moves the hands counterclockwise.

3 Press the middle right button **B** of the watch.

The menu of [Settings] appears on the watch.



- [Back] is chosen when the menu appears.

4 Press and release the lower right button **A** or the upper right button **C** repeatedly to choose a menu item.

5 Press the middle right button **B** of the watch.

The setting of the menu item you chose is changed.

- Each time you press button, the setting is changed.

[About]	Use it to see the serial number and the firmware version of the watch. <ul style="list-style-type: none"> This item has no setting values. Press the lower right button A/the upper right button C of the watch to scroll indication up/down.
[Watch Mode]	You can set which wrist you wear the watch on. Choose [RIGHTIE] or [LEFTIE]. <ul style="list-style-type: none"> Each time you change the setting, indication on the display rotates upside down. When you choose [LEFTIE], read "middle right", "upper right" and "lower right" on this manual as "middle left", "upper left" and "lower left" respectively.
[Dial Info]	You can set whether information is indicated on the display of the watch or not. <ul style="list-style-type: none"> Pressing and holding the upper right button C switches its [ON]/[OFF].
[Heart Rate]	You can set whether you use the heart rate sensor.
[Vibration]	You can set vibration strength of the watch. Choose one of the followings: [OFF], [MILD], [MEDIUM] or [STRONG]. <ul style="list-style-type: none"> Each time you change the setting, the watch actually vibrates in the new setting.
[Notification Size]	You can set text size of notifications on the display of the watch. You can choose one from [SMALL], [MEDIUM] and [BIG].
[Do Not Disturb]	You can set whether notifications to the watch are stopped temporarily. You can choose one from [ON], [MIRROR PHONE] and [OFF]. <ul style="list-style-type: none"> The setting does not affect action of alarm.
[Back]	The [Settings] menu is closed.
[Front Light]	You can set whether you use the light.

6 Repeat steps 4 and 5 to adjust settings of other items.

7 After finishing setting, press and release the lower right button **A** or the upper right button **C** of the watch repeatedly to choose [Back].

8 Press the middle right button **B** of the watch.

The hands of the watch point the [Settings] icon.



9 Press the upper right button **C**.

The hands of the watch point the [Home] icon.

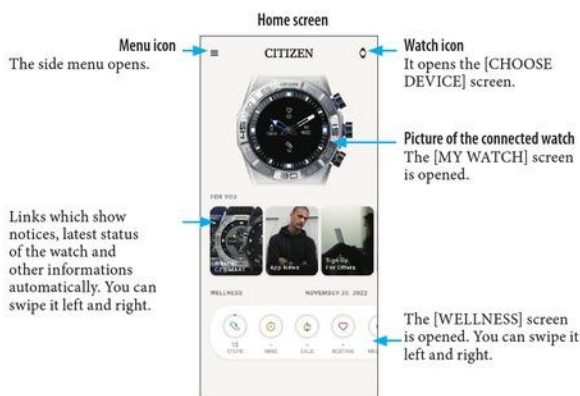
10 Press the middle right button **B** of the watch to finish the procedure.

The watch returns to normal indication.

- After step 5, press and hold the middle right button **B** of the watch to skip to step 8.

The screen of the dedicated app

We call the screen just below the home screen, which appears immediately after starting the dedicated app.



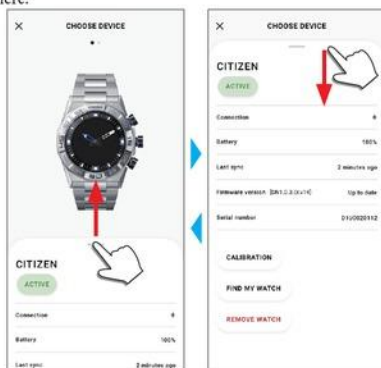
Side menu

You can control your account, settings of activity goals and those for the dedicated app here.



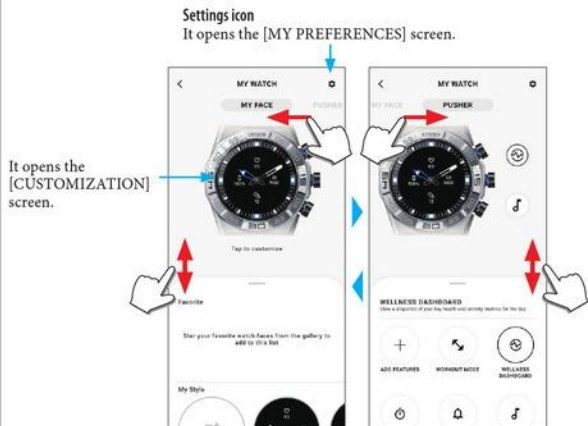
[CHOOSE DEVICE] screen

You can add watches, manage connection and adjust the reference position of the watch hands here.



[MY WATCH] screen

You can customize watch face indication and assign function to buttons of the watch here. You can also control settings of notifications and alarm.



■ [MY PREFERENCES] screen

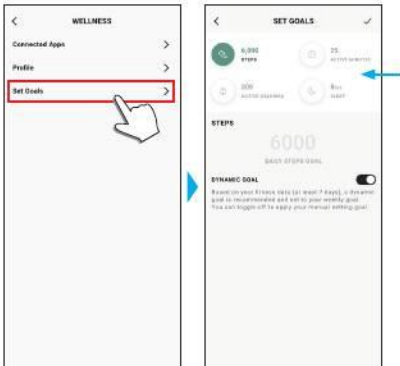
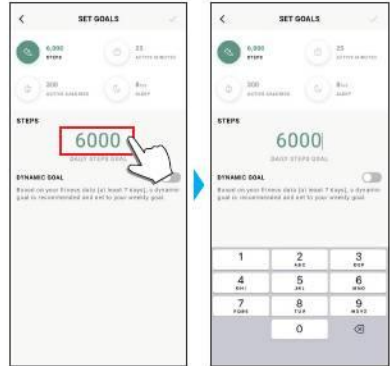
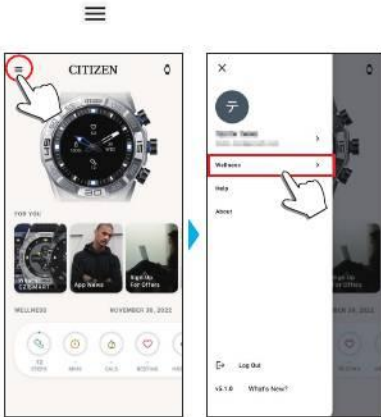
You can control settings of alarm, notifications, unit, etc. here.



■ [CUSTOMIZATION] screen

You can control display indication of the watch here.





Executing settings for functions and assigning them to the buttons of the watch

You can assign various functions to the lower right button (A) and the upper right button (C) of the watch. Some functions need setting on the dedicated app.

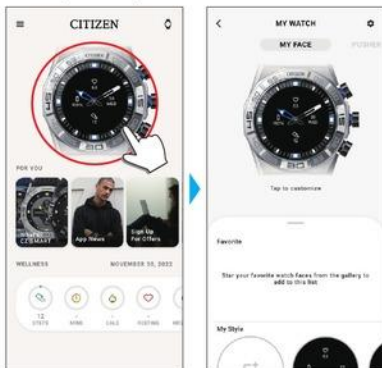
1 Start the dedicated app.

The watch and the smartphone are connected.

- If you have not signed up, sign up.
- If synchronization of the watch and the smartphone starts, wait until it is finished.

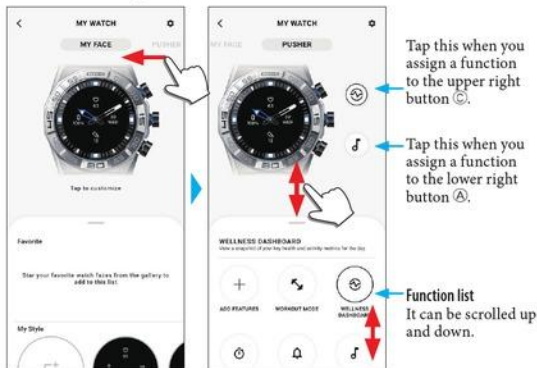
2 Tap the picture of the connected watch on the home screen.

The [MY WATCH] screen is opened.



3 Swipe left on the [MY WATCH] screen to indicate [PUSHER].

The function list is appeared on the tab on the bottom of the screen.



- The example above shows when the upper right button (C) is tapped.

4 Tap the button which you want to assign a function to and tap a function on the bottom of the screen.

- Items shown on the function list may differ depending on status of the watch.

[ADD FEATURES]	Use this to assign an iidea of Riiiver to a button as a function. Function setting: Turn on iideas on [IIDEA LIST] and execute required settings to make iideas of Riiiver appear on the bottom of the screen. <ul style="list-style-type: none"> • Riiiver and iideas are not shown on the list in places where the Riiiver service is not available. Even after assigning an iidea, it is not shown in places where the Riiiver service is not provided.
[WORKOUT MODE]	It measures your exercise and indicates its result for each exercise type. Results of your exercise are indicated on the screen of the app.
[WELLNESS DASHBOARD]	It indicates [STEPS], [ACTIVE MINUTES (MINS)], [ACTIVE CALORIES (CAL)], [HEART RATE (RESTING)] and [SLEEP (HRS MINS)] of a day. It measures your heart rate.
[STOPWATCH]	It provides stopwatch measurement. The minute hand overlaps the hour hand and they moves to indicate seconds.
[NOTIFICATIONS]	It indicates notifications. Function setting: it is required to execute settings for notifications on [Notifications] on the [MY PREFERENCES] screen.
[MUSIC CONTROL]	You can control music playback through the watch while using the music app: can command play/pause/go previous/go next. Play/pause: Press and hold the upper right button (C) of the watch. Volume up: press the upper right button (C) once. Volume down: press the lower right button (A) once. Back to the previous tune: Press and hold the lower right button (A).
[TIMER]	It provides a countdown timer. The minute hand overlaps the hour hand and they moves counterclockwise to countdown seconds. You can set countdown time in 1-minute increments. The watch vibrates when time is up. Function setting: countdown time must be changed on the watch itself.
[WEATHER]	It indicates weather reports of up to two places including current one. Function setting: choose places on [ADD LOCATION]. <ul style="list-style-type: none"> • Permission for access to the positional information of your smartphone is needed.
[RING PHONE]	It makes your smartphone emit sound to help you when looking for the phone. To stop emitting sound, press the middle right button (B) of the watch.

Functions added through [ADD FEATURES]

[UV Index]	It indicates UV indexes of three places including the current one.
[Surf Report]	It indicated special weather reports for surfing.
[Hue Light]	It controls Hue, a smart light of Philips. • This function is available on iOS only.
[Golf Report]	It indicated special weather reports for golf.
[Golf Course]	It indicates information of each hole of a course such as length and handicap.
[Flight Information]	You can check information of the flight you registered.
[Delivery Tracking]	You can check delivery tracking information of your parcel.
[Google Nest Thermostat]	You can control room temperature management tool.
[Yard to Hole]	You can check distance to a hole on a golf course.

5 Tap the back icon (<) on the upper right of the [MY WATCH] screen to finish the procedure.

- Follow instructions on the screen.



The selected function is assigned to the button.

■ To try to use assigned functions

When you press a button of the watch which a function is assigned to, the screen for the function is shown on the display of the watch.

- Some functions needs Internet connection through the dedicated app.

■ After using functions

Press and hold the middle right button Ⓜ to return to normal indication.

- Measurement of functions such as the timer continues after returning to the normal indication.

Customizing the watch face

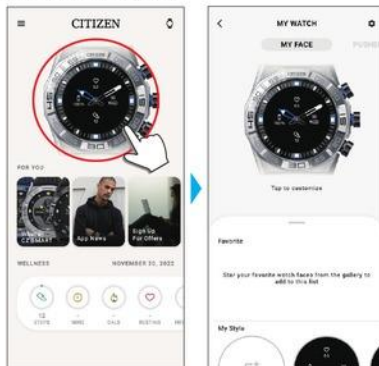
1 Start the dedicated app.

The watch and the smartphone are connected.

- If you have not signed up, sign up.
- If synchronization of the watch and the smartphone starts, wait until it is finished.

2 Tap the picture of the connected watch on the home screen.

The [MY WATCH] screen is opened.



3 Swipe up the tab on the bottom of the screen while [MY FACE] is indicated.

- Swipe right on the screen when [PUSHER] is shown.

- Proceed to step 5 when you want to customize the current watch face.

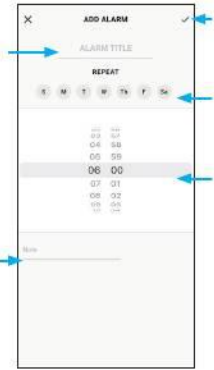
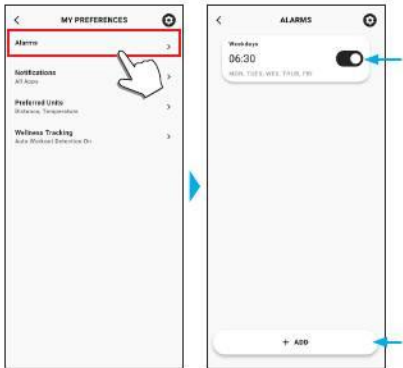
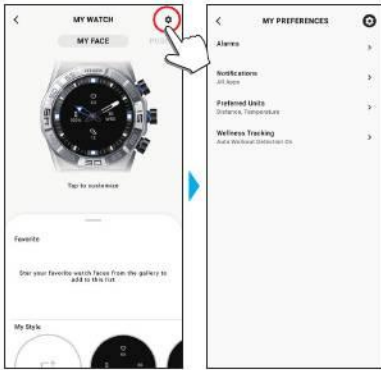
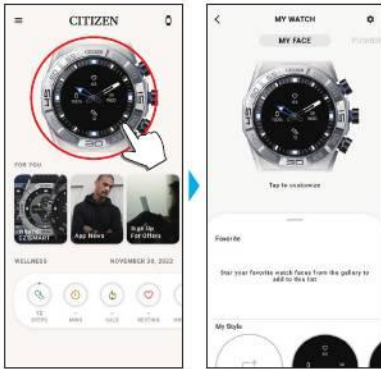


It can be scrolled up and down.

4 choose and tap a watch face you like.

The face you chose appears on the display of the watch and the screen of the smartphone.

Proceed to the next when you want to customize the watch face.



Setting notification

- Notifications may be missed when distance between the smartphone and the watch is 10 m (33 feet) or more or there is any obstacle between them.

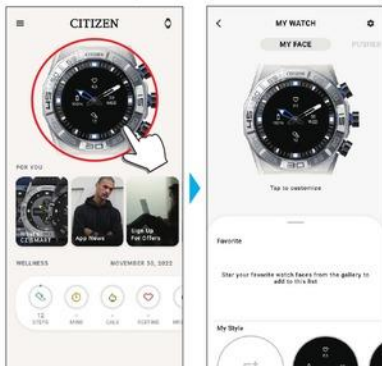
1 Start the dedicated app.

The watch and the smartphone are connected.

- If you have not signed up, sign up.
- If synchronization of the watch and the smartphone starts, wait until it is finished.

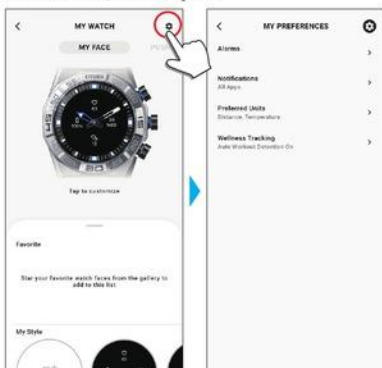
2 Tap the picture of the connected watch on the home screen.

The [MY WATCH] screen is opened.



3 Tap the setting icon (⚙️) on the [MY WATCH] screen.

The [MY PREFERENCES] screen is opened.



4 Tap [Notifications] on the [MY PREFERENCES] screen.

The [NOTIFICATIONS] screen is opened.

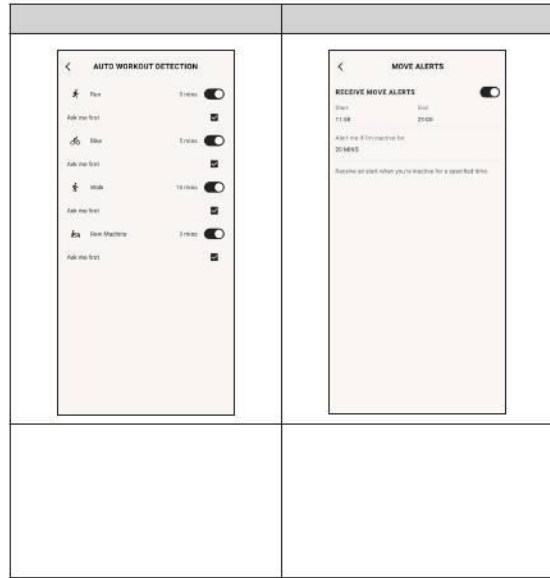
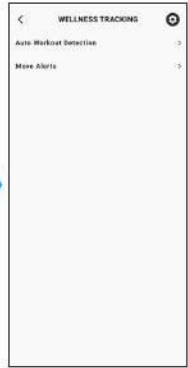
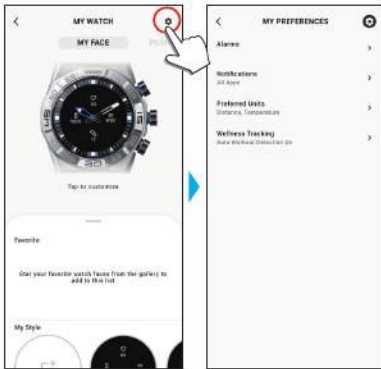
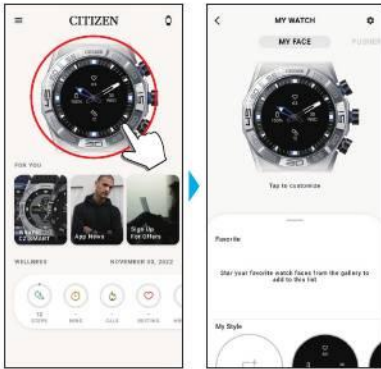


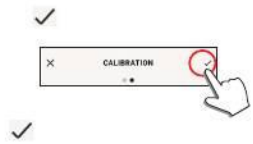
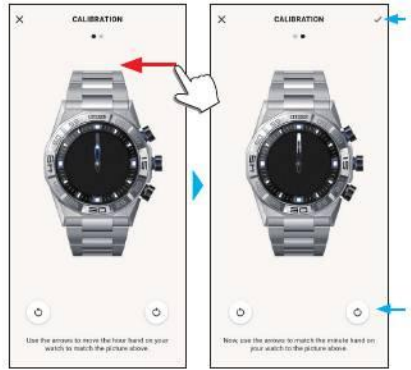
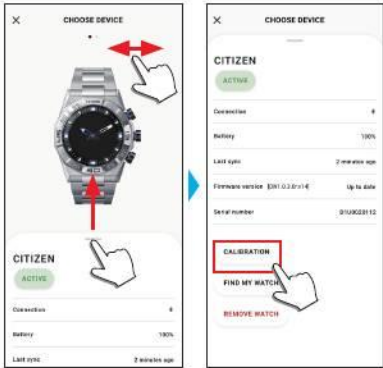
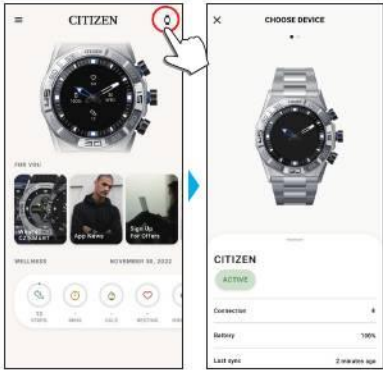
- You need to control access right on your smartphone to access its address management app.
- On Android OS, you can tap items with "i" and control their access right.

■ About [QUICK RESPONSE]

When a call comes in from one of notification targets, you can answer it with a message using [QUICK RESPONSE] (the dedicated app for Android only). You can make and stock up to two messages beforehand.

When you use [QUICK RESPONSE], as a call comes in, choose a message from the stocked ones by using the lower right button (A) or the upper right button (C) on the watch and send it by using the middle right button (B).





About the menu on the watch

You can choose a function from the menu of the watch and use it.

- Some functions are not available without connection between the watch and the smartphone through the dedicated app.

1 Press the middle right button **(B)** of the watch.

The hands of the watch point one of the function icons on the display.



- [Home] is pointed immediately after indication.
- The indication automatically returns to normal indication in 3 minutes without executing any operation.

2 Press and release the lower right button **(A)** or the upper right button **(C)** of the watch repeatedly to switch the function to use.

The hands of the watch point one of the function icons.

- Press and hold the lower right button **(A)** or the upper right button **(C)** of the watch to move the hands continuously.
- The black icon in a white circle shows the function currently chosen.
- iiideas are not available in places where the Riiver service is not provided.

[Weather]	It indicates weather reports of up to two places including current one. <ul style="list-style-type: none"> Settings on the dedicated app are needed to use it. For details, see "Executing settings for functions and assigning them to the buttons of the watch" (→ page 11).
[Ring Phone]	It makes the smartphone connected with the watch emit sound. It is useful for searching the smartphone. To stop emitting sound, press the middle right button (B) of the watch.
[Music Control]	You can control music playback through the watch while using the music app: can command volume up/down and play/pause/go previous. Play/pause: Press and hold the upper right button (C) of the watch. Volume up: press the upper right button (C) once. Volume down: press the lower right button (A) once. Back to the previous tune: Press and hold the lower right button (A) .
[Notifications]	It indicates notifications. <ul style="list-style-type: none"> Settings on the dedicated app are needed to use it. For details, see "Setting notification" (→ page 15).
[Home]	The watch returns to normal screen.
[Settings]	Use it to execute settings on the watch. <ul style="list-style-type: none"> For details, see "Settings on the watch body" (→ page 6).
[Wellness]	It indicates [STEPS], [ACTIVE MINUTES (MINS)], [ACTIVE CALORIES (CAL)], [HEART RATE (RESTING)] and [SLEEP (HRS MINS)] of a day. It measures your heart rate.
[Workout]	Use it to choose a type of exercise from 10 categories and take measurement for it. For some activities, you can make your exercise course indicated on a map. <ul style="list-style-type: none"> For [Run], [Bike], [Walk] and [Row Machine], you can set the watch to detect them automatically and start measurement. For details, see "Detecting activities automatically" (→ page 16).
[Timer]	It provides a countdown timer. For details, see "Using the timer" (→ page 18).
[Stopwatch]	It provides stopwatch measurement. The minute hand overlaps the hour hand and they moves to indicate seconds.

3 Press the middle right button **(B)** of the watch.

Indication on the display is switched to that for the function you chose.

- Some functions starts working immediately.

■ To return to normal indication

Press and hold the middle right button **(B)** of the watch to return to normal indication.

- When you have returned to the menu from settings of an item, press and hold the middle right button **(B)** again.

Using the timer

The timer on this watch can set countdown time in 1-minute increments. Countdown time of the timer must be changed on the watch.

1 Press the middle right button **(B)** of the watch.

The hands of the watch point one of the function icons on the display.



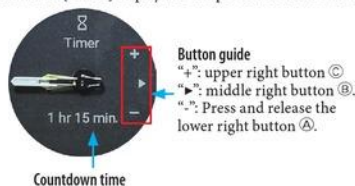
- The indication automatically returns to normal indication in 3 minutes without executing any operation.

2 Press and release the lower right button **(A)** or the upper right button **(C)** of the watch repeatedly to indicate [Timer].



3 Press the middle right button **(B)** of the watch.

The watch shows the [Timer] display and the previous countdown time is indicated.



Here we change the countdown time to 25 minutes for example.

4 Press and release the lower right button **(A)** repeatedly to change countdown time to [25 min].

- Countdown time changes continuously in 10-minute increments while you are pressing and holding one of the buttons.

5 Press the middle right button **(B)** of the watch.

The hands of the watch start moving from 12 o'clock position and countdown timer starts.



- Press the middle right button **(B)** of the watch to return to normal indication. The timer keeps countdown.

■ After measurement

The watch vibrates to tell you time is up.

To cancel measurement

Measurement of timer and other functions does not stop even when the display is switched. To cancel measurement, stop it following the steps below.

- 1 Call the [Timer] display by executing steps 1 - 3 of "Using the timer" (→ page 18).



- 2 Press the lower right button **A** of the watch.

Countdown of the timer is paused.

- Press the lower right button **A** of the watch again to restart.



- 3 Press the upper right button **C** of the watch to reset the timer.

The timer's remaining time becomes [0 min] and countdown is ended.



- 4 Press the middle right button **B** of the watch to finish the procedure.

The watch returns to normal indication.

- The countdown time set is kept.
- Pressing the upper right button **C** at step 3 above updates countdown time.

Bluetooth® wireless technology

Regulatory concerning to Bluetooth® (Areas where Bluetooth® is available)

Use of the Bluetooth® communication technology is not legally permitted in some countries or regions.

- Using this watch in a country where it is not permitted may be punished under its law.
- Communication using Bluetooth® may be monitored intentionally or accidentally. Do not use this watch for important communication or any communication involving human lives.

For details of Bluetooth, see the following items.

https://www.citizenwatch-global.com/support/html/en/yf20/bt_info_01_yf20.html



Specifications

Model	YF20	
Type	Analog-digital combination smart watch	
Display functions	Display section	Hour, minute
	Display section	Indicates various functions permanently
Duration	About 2 weeks - 4 weeks (vary depending on conditions of use)	
Battery	Rechargeable cell (lithium ion cell), 1pc.	
Additional functions	<ul style="list-style-type: none"> • Connection function (through the dedicated app on the smartphone) • Vibration function (for alarm and so on, setting through the dedicated app) • Activity monitoring function • Heart rate measurement function • Riiiver function • Indications based on functions equipped with the watch: Steps/time and achievement of each type of workout/heart rate/calorie consumption/hours of sleep notification of incoming calls/notification from apps/move alerts stopwatch/timer Music control weather/temperature/chance of rain second time zone (local time)/date and days-of-week indication assigning functions to buttons/editing watch faces Searching the smartphone 	

Specifications and contents are subject to change without prior notice.