

ManualsLib.com

ManualsLib.com

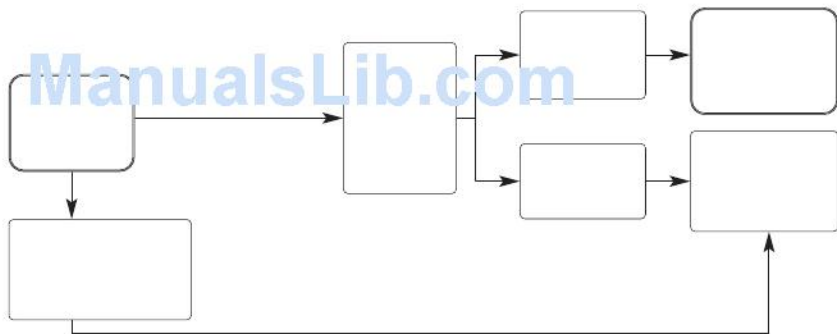




ManualsLib.com

ManualsLib.com



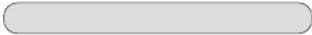


ManualsLib.com





ManualsLib.com



ManualsLib.com



5. Do not move the watch during reception.
 6. When the signal has been properly received, the second hand will automatically move from H, M or L to the time that was received, all the hands will be adjusted, and the second hand will return to 1-second interval movement.
- The reception level may be affected by the surroundings in which the watch is being used. While referring to reception levels H, M and L, keep changing the watch direction or location and try to receive the signals.

Automatic Reception Recovery

- After the watch has stopped due to an insufficient charging, charge the watch in sunlight sufficiently. When the watch is recharged sufficiently, it will automatically receive the radio signal once.

Regularly charge your watch so that it does not become insufficiently charged.

To confirm, refer to “Confirming Reception Status” on page 155.

- When the watch is receiving the radio wave signal, all of the hands will stop. To check the time, hold button (A) for 2 seconds to cancel radio wave reception. The hands will then return to the current time.



6. Poor Reception Areas

It may be difficult to properly receive the radio signals under certain environmental conditions or in areas susceptible to radio noise.



- ◆ Inside reinforced concrete buildings, or underground



- ◆ Near high-tension electrical lines, railway overhead wires or communication facilities



- ◆ Inside vehicles, including cars, trains and aero planes



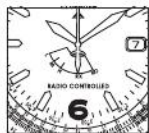
- ◆ Near TVs, refrigerators, computers, fax machines and other home electronic devices or electrical appliances



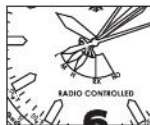
- ◆ Near cellular phones in use



- ◆ Extremely hot or cold locations



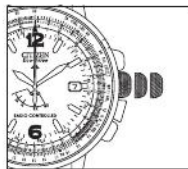
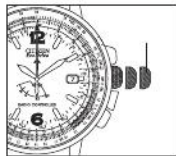
ManualsLib.com



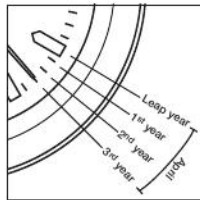
ManualsLib.com



ManualsLib.com



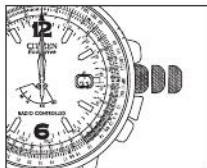
ManualsLib.com

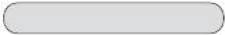


ManualsLib.com



ManualsLib.com





ManualsLib.com

ManualsLib.com

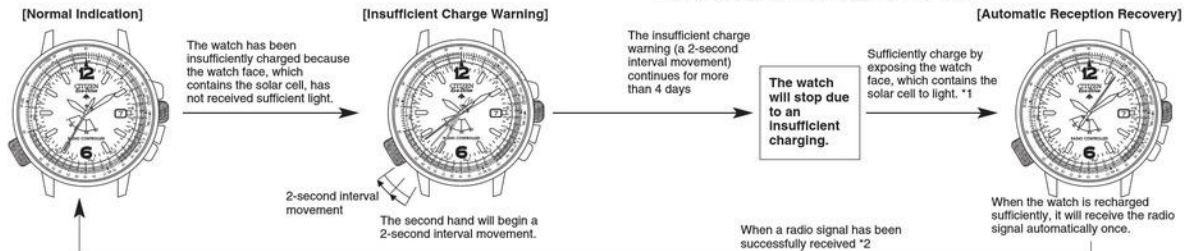


ManualsLib.com



14. Characteristics of the Solar Powered Watch

○ When the watch is insufficiently charged, the indication will be changed as follows:



* 1. **The watch stopped due to insufficient charging.**

- It takes at least 30 minutes to recharge sufficiently to perform automatic reception recovery, even if the watch is being exposed to light.
- After recovery, refer to "Guide to Charging Time" on page 180 and sufficiently charge the watch.

* 2. **The watch failed to perform automatic reception recovery**

- The time is incorrect even if the second hand moves at 1-second intervals, so after fully charging the watch, set the time manually or with on demand reception.

ManualsLib.com

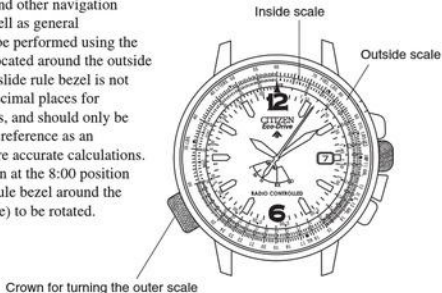




ManualsLib.com

15. Using the Slide Rule Bezel

Flying distance and other navigation calculations as well as general calculations can be performed using the slide rule bezel located around the outside of the dial. This slide rule bezel is not able to display decimal places for calculation results, and should only be used as a general reference as an alternative to more accurate calculations. Turning the crown at the 8:00 position allows the slide rule bezel around the dial (Outside Scale) to be rotated.

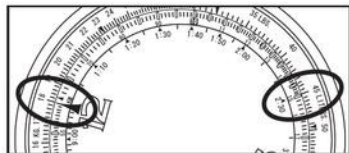


A. Navigation Calculator

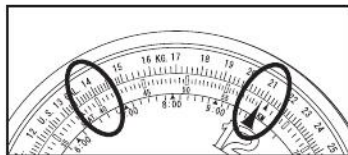
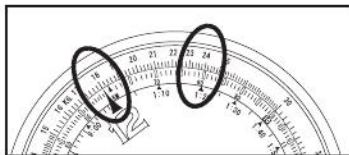
1. Calculation of time required

Problem: How long does it take an airplane flying at 180 knots to fly a distance of 450 nautical miles?

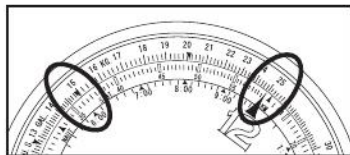
Solution: Set the 18 mark on the outside scale to the SPEED INDEX (▲). At this time, the point on the inside scale that is aligned with 450 on the outside scale indicates (2:30), and the answer is 2 hours and 30 minutes.



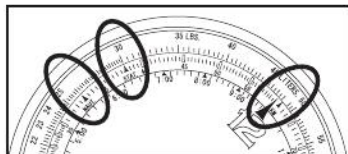
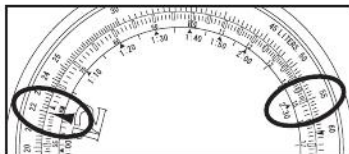
ManualsLib.com



ManualsLib.com

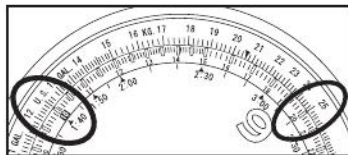
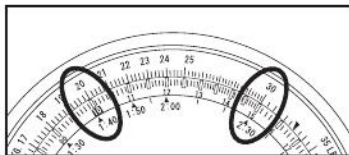


ManualsLib.com

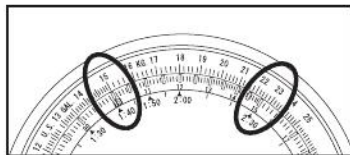
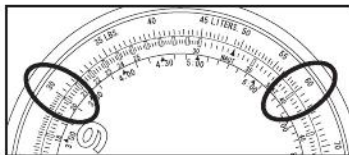




ManualsLib.com



ManualsLib.com



ManualsLib.com



ManualsLib.com

ManualsLib.com

ManualsLib.com