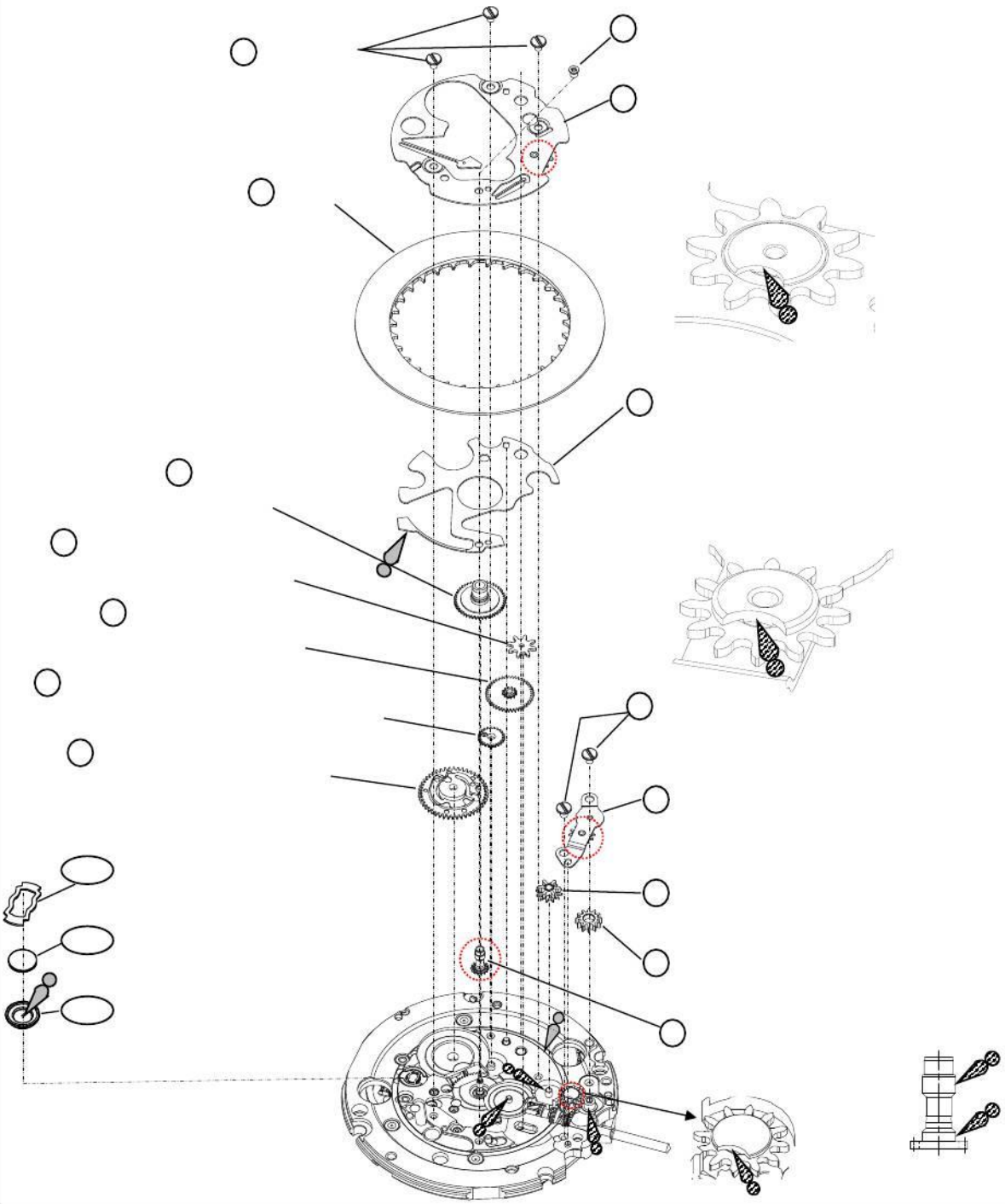
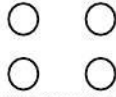
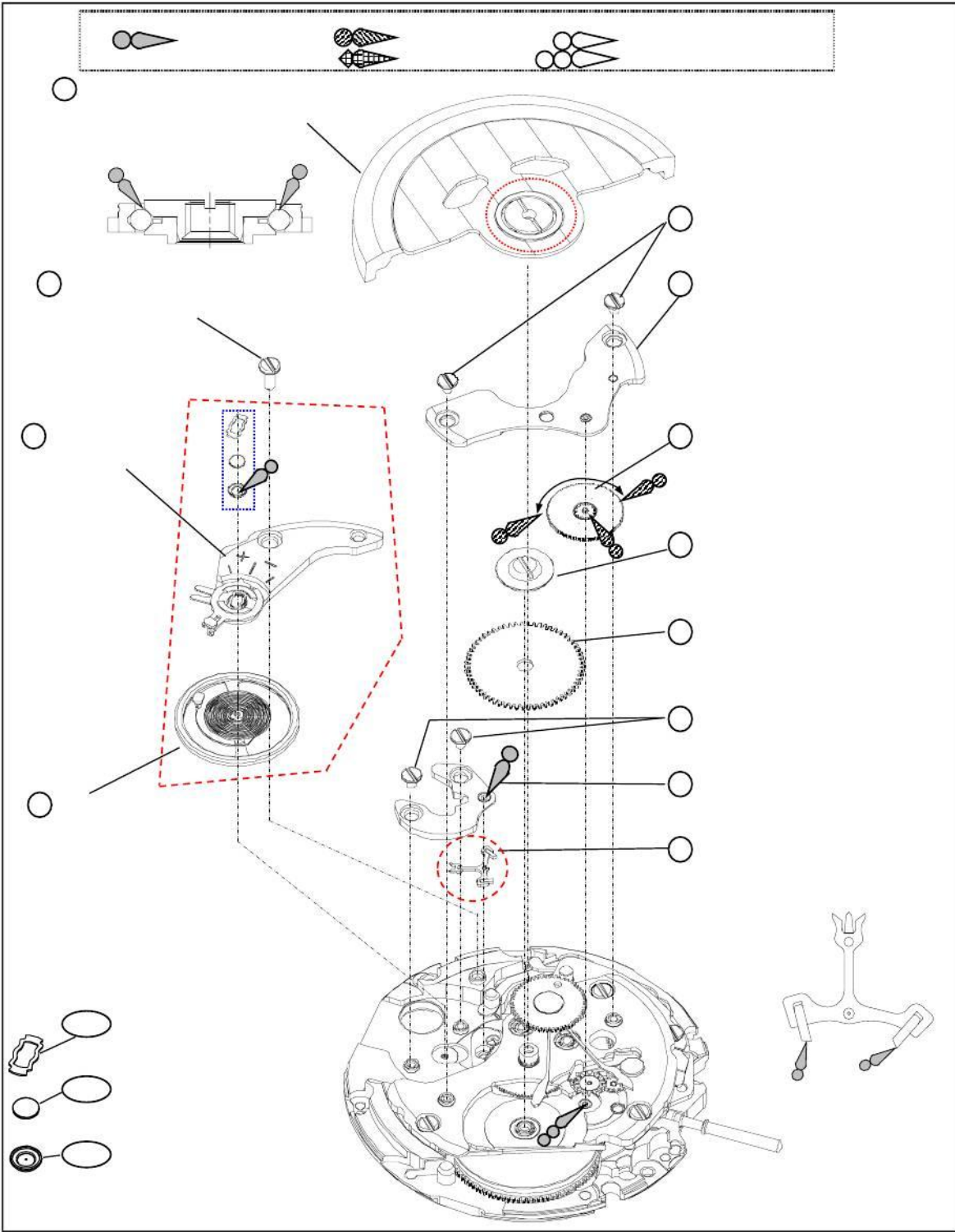


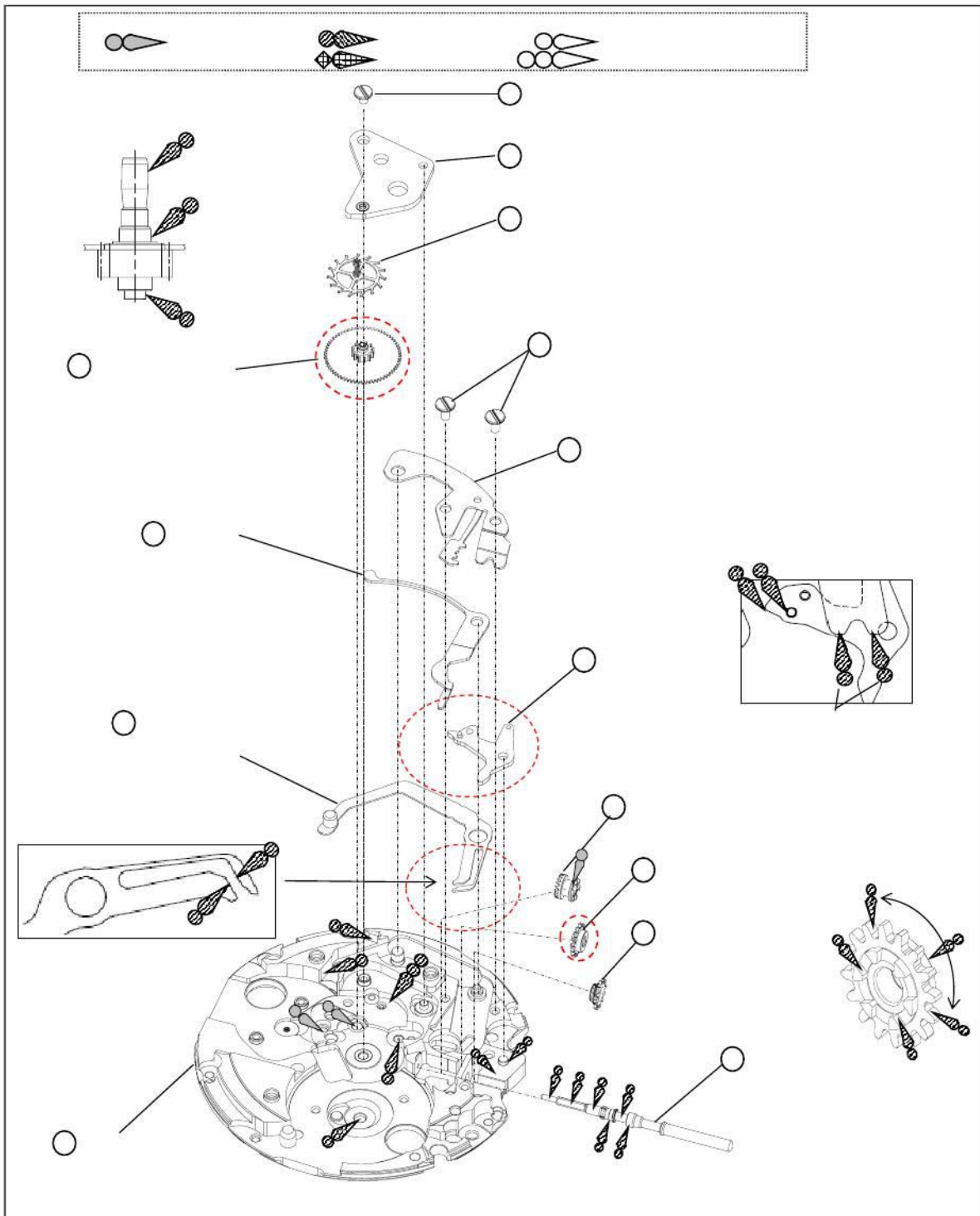
SEIKO WATCH CORPORATION



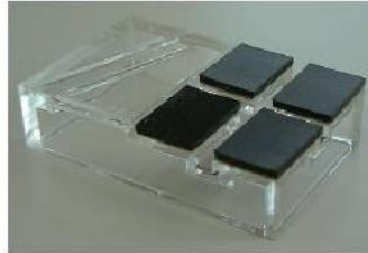
SEIKO WATCH CORPORATION



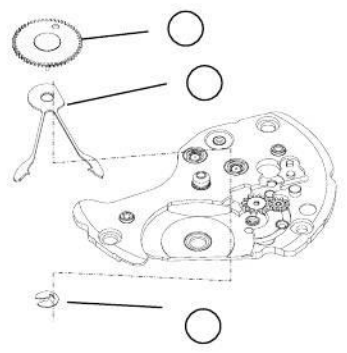
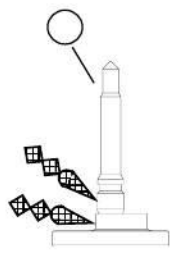
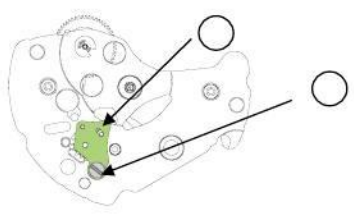
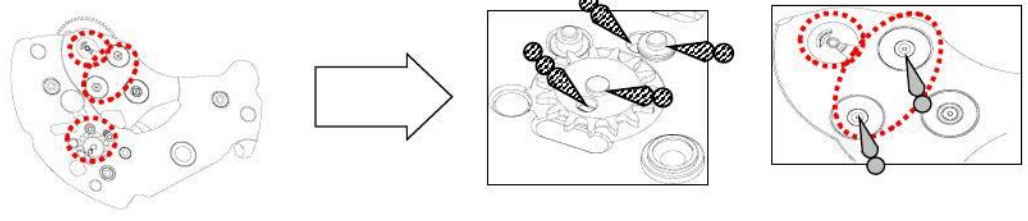
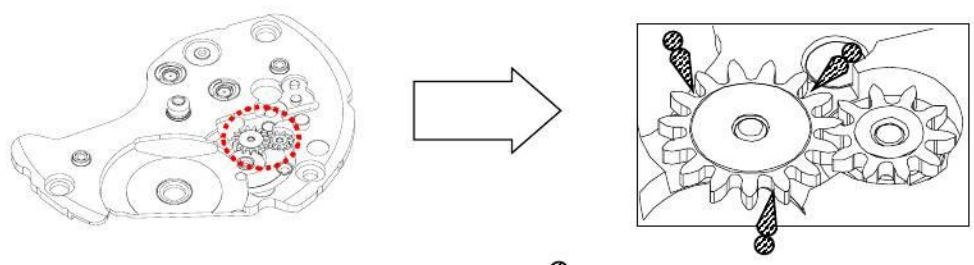
SEIKO WATCH CORPORATION



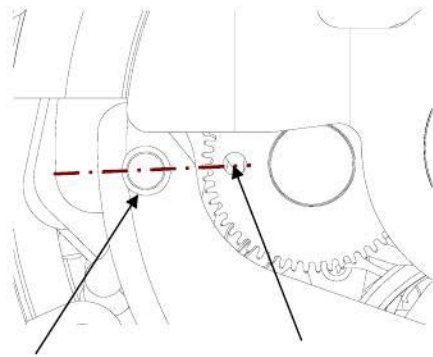
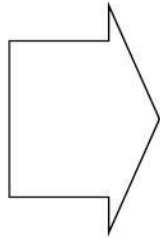
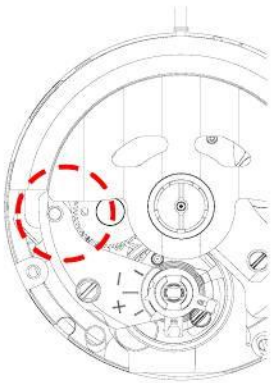
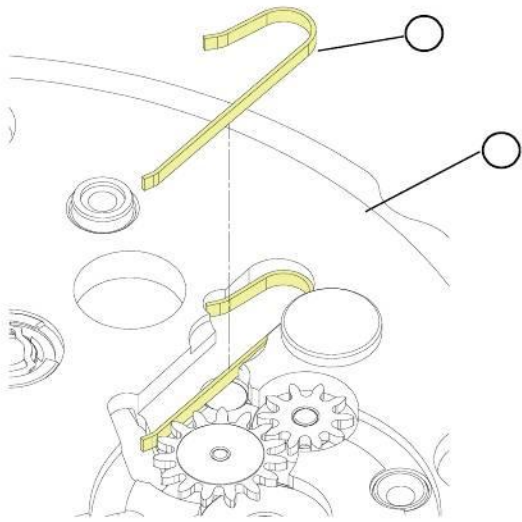
SEIKO WATCH CORPORATION

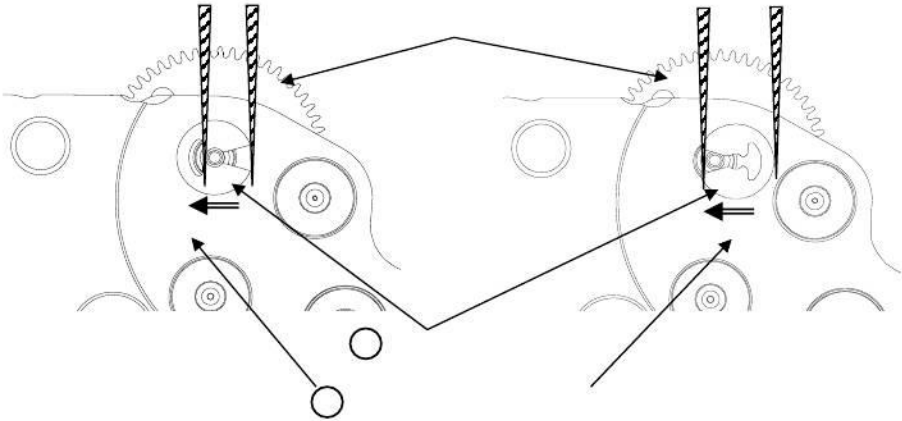
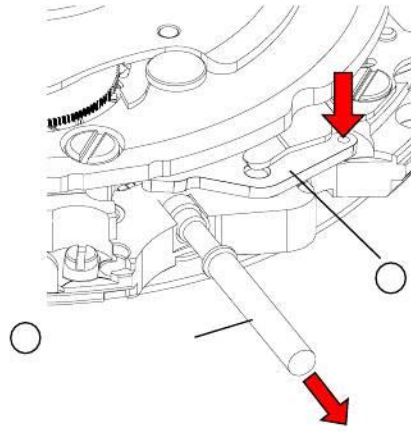


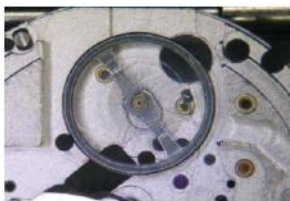
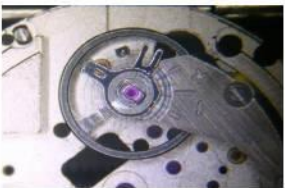
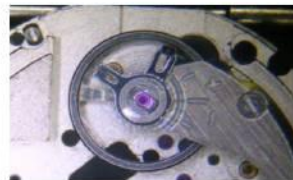
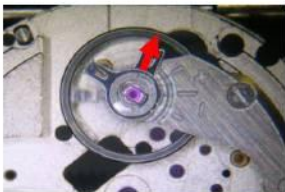
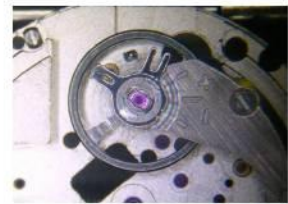
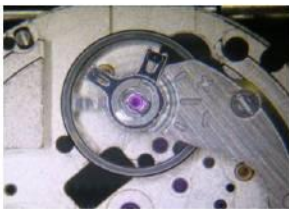
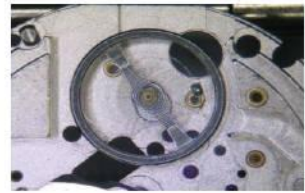
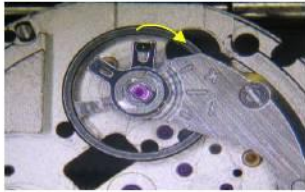
SEIKO WATCH CORPORATION

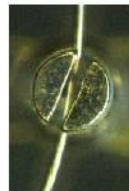
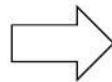
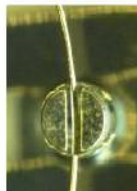
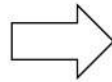
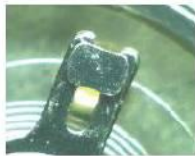
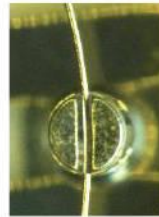
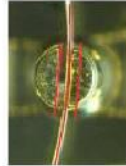


SEIKO WATCH CORPORATION

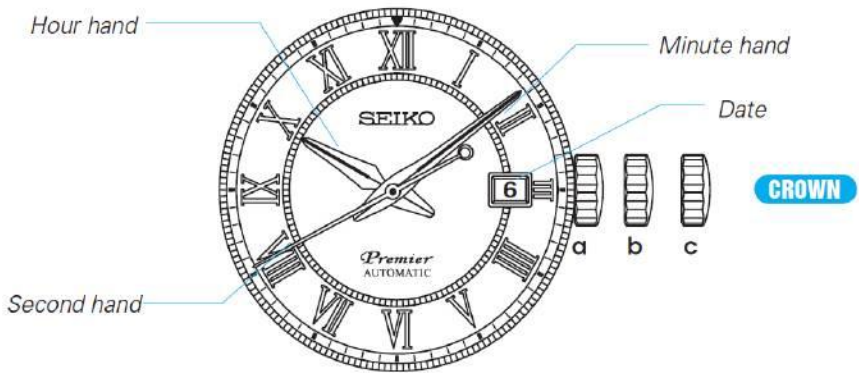








SEIKO WATCH CORPORATION



	<input type="text"/>	
	<input type="text"/>	
	<input type="text"/>	
	<input type="text"/>	
	<input type="text"/>	
	<input type="text"/>	

● Accuracy test

Measure the rate in three different positions within 30 minutes after the watch is fully wound up (wait approximately for 5 minutes after winding up in order to get a stable oscillation of the balance) and make sure the value shows within the range in the table below.

Measure the rate in dial-up position after 24 hours from fully wound up (T24) and check the rate difference with the rate in dial-up position when it is fully wound up (T0). Make sure that the value of T24-T0 shows within the range of the isochronism in the table below.

Standard rate for measurement	Testing positions	Instantaneous rate at T0 (Fully wound condition)			Isochronous fault
		Dial upward	6 o'clock at the top	9 o'clock at the top	Dial upward
	Measurement (Daily rate in seconds : s/d)	± 20 s/d	± 30 s/d	± 30 s/d	±30 s/d

● Accuracy of Mechanical Watches

- ❖ The accuracy of mechanical watches is indicated by the daily rates of one week or so.
- ❖ The accuracy of mechanical watches may not fall within the specified range of time accuracy because of loss/gain changes due to the conditions of use, such as the length of time during which the watch is worn on the wrist, arm movement, whether the mainspring is wound up fully or not, etc.
- ❖ The key components in mechanical watches are made of metals which expand or contract depending on temperatures due to metal properties. This exerts an effect on the accuracy of the watches. Mechanical watches tend to lose time at high temperatures while they tend to gain time at low temperatures.
- ❖ In order to improve accuracy, it is important to regularly supply energy to the balance that controls the speed of the gears. The driving force of the mainspring that powers mechanical watches varies between when it is fully wound and immediately before it is unwound. As the mainspring unwinds, the force weakens. Relatively steady accuracy can be obtained by wearing the watch on the wrist frequently for the self-winding type and winding up the mainspring fully everyday at a fixed time to move it regularly for the wind-up mechanical type.
- ❖ When affected by external strong magnetism, a mechanical watch may lose/gain time temporarily. The parts of the watch may become magnetized depending on the extent of the effect. In such a case, consult the retailer from whom the watch was purchased since the watch requires repair, including demagnetizing.

● Duration time test

Check the Power reserve of the watch after the 10/16 condition with the dial-up position. Make sure that the watch runs approximately 41 hours until it stops.