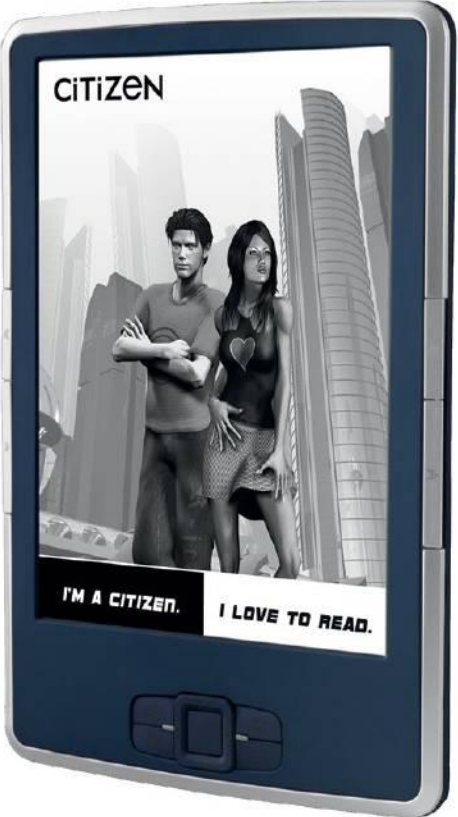
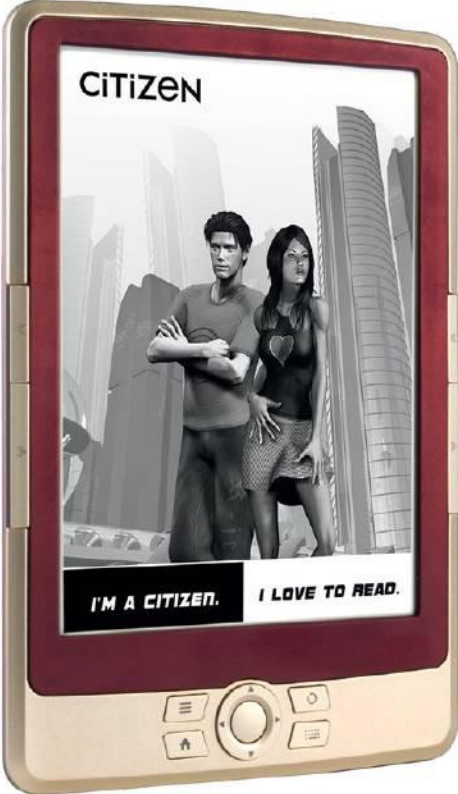
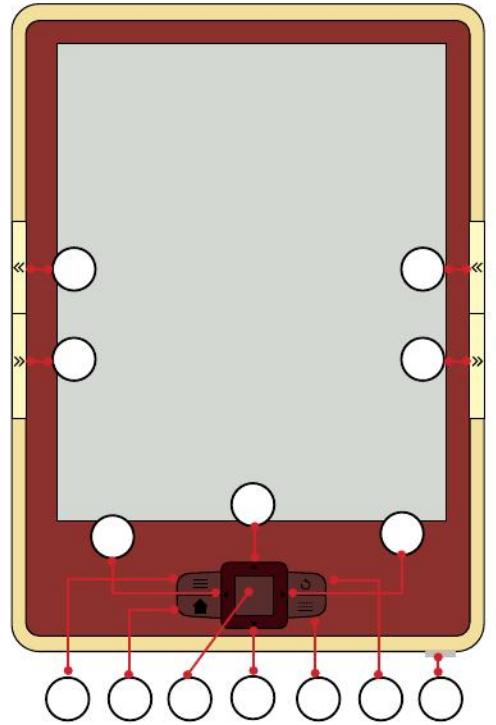
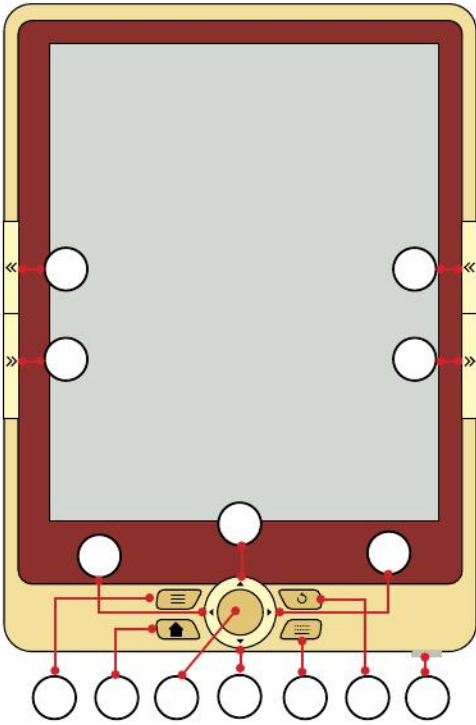



CITIZEN



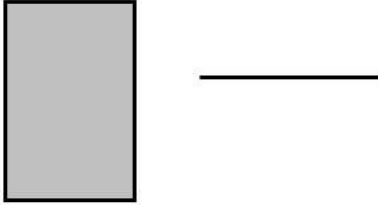


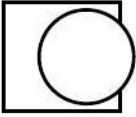


■

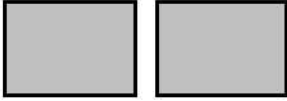


■

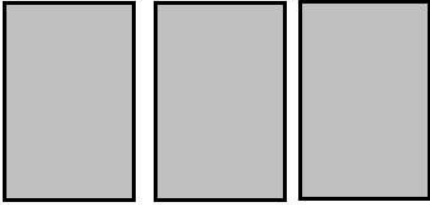




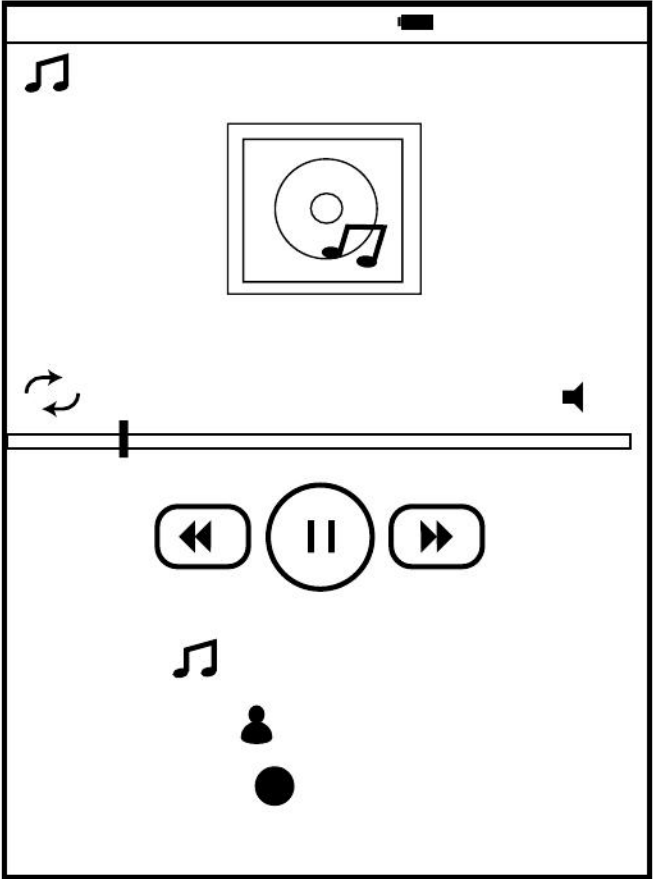
■



■



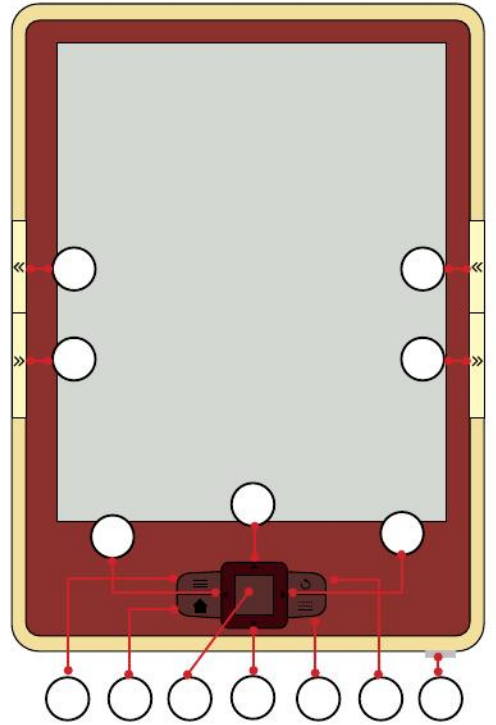
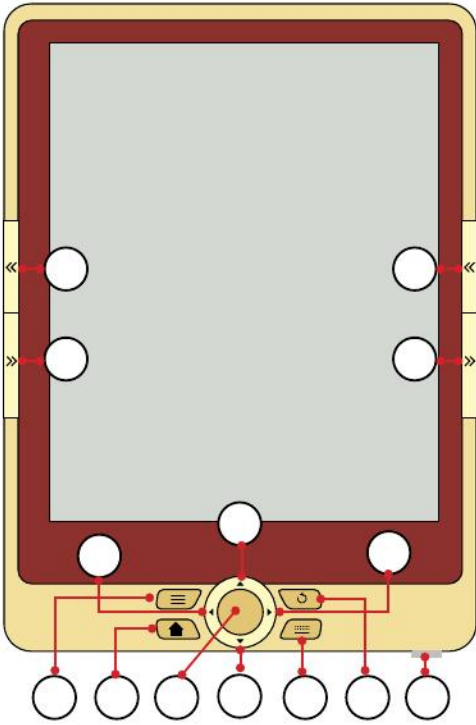
■






CITIZEN







■



A large rectangular area containing various geometric shapes and lines for a visual discrimination task. On the left, a gray rectangle is positioned above a horizontal line. On the right, a circle is enclosed within a square frame. Below these are two gray squares, followed by three gray vertical rectangles. At the bottom right, there are three horizontal lines.

