

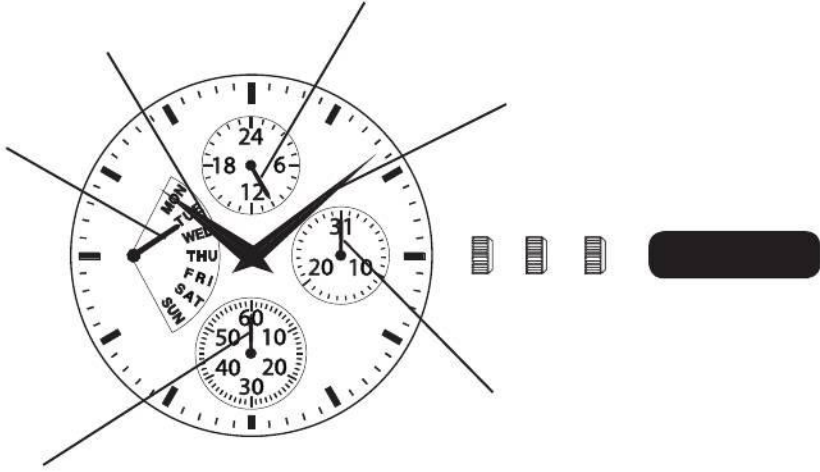
PULSAR

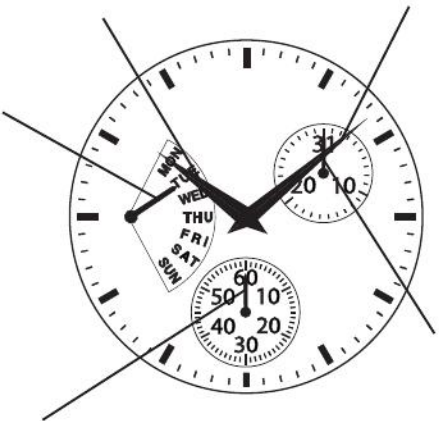
CAL. VD84, VD87 ANALOGUE QUARTZ

- Time display:
 - Hour and minute hands with small second hand
 - 24 hour hand (VD84 only)
- Calendar display:
 - Date hand
 - Retrograde day of the week hand

ENGLISH

English

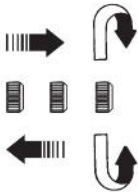
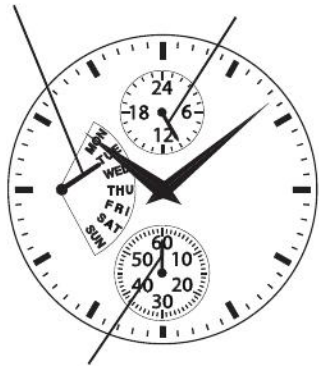




English

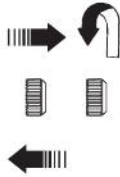
English





English

English



NOTES ON OPERATING THE WATCH

DAY AND TIME SETTING

- The retrograde day of the week can be set more quickly by following procedures:
 - (1) Pull out the crown to second click position for day adjustment.
 - (2) Turn the crown clockwise until the day advance by one increment.
 - (3) Turn the crown counterclockwise until the center hands come at or before 12:00 position.
 - (4) Turn the crown clockwise again until the day advance by one increment.
 - (5) By repeatedly perform the steps (3) & (4), the day hand can be adjusted to the desired position more quickly.
- When adjusting the day hand, turn the crown slowly.
- When setting the time, check that AM/PM is set correctly.
- When setting the minute hand, advance it 4 to 5 minute ahead of the desired time and then turn it back to the exact minute.
- The 24 hour hand (or 24 hour rotating wheel) turns full circle in one day (VD84 only).

DATE SETTING

- Do not set the date between 10:00 p.m. and 2:00 a.m. Otherwise, it may not turn properly.
- While setting the date hand, check that it moves properly in one-day increments.
- It is necessary to adjust the date on the first day after a 30-day month and February.

BATTERY CHANGE

3
Years

Battery life : Approx. 3 years

Battery : SEIKO SR626SW

- *As the battery is inserted at the factory to check the function and performance of the watch, its actual life once in your possession may be less than the specified period.*
- *When the battery expires, be sure to replace it as soon as possible to prevent any malfunction.*
- *We recommend that you contact an AUTHORIZED PULSAR DEALER for battery replacement.*



WARNING

- Do not remove the battery from the watch.
- If it is necessary to take out the battery, keep it out of the reach of children. If a child swallows it, consult a doctor immediately.
- Never short-circuit, tamper with or heat the battery, and never expose it to fire. The battery may burst, become very hot or catch fire.



CAUTION

- The battery is not rechargeable. Never attempt to recharge it, as this may cause battery leakage or damage to the battery.

TO PRESERVE THE QUALITY OF YOUR WATCH

WATER RESISTANCE

● Non-water resistant



If “WATER RESISTANT” is not inscribed on the case back, your watch is not water resistant, and care should be taken not to get it wet as water may damage the movement. If the watch becomes wet, we suggest that you have it checked by an AUTHORIZED PULSAR DEALER or SERVICE CENTER.

● Water resistance (3 bar)



If “WATER RESISTANT” is inscribed on the case back, your watch is designed and manufactured to withstand up to 3 bar, such as accidental contact with splashes of water or rain, but it is not designed for swimming or diving.

● Water resistance (5 bar)*

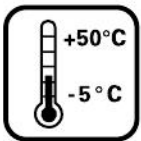


If “WATER RESISTANT 5 BAR” is inscribed on the case back, your watch is designed and manufactured to withstand up to 5 bar and is suitable for swimming, yachting and taking a shower.

● Water resistance (10 bar/15 bar/20 bar)*



If “WATER RESISTANT 10 BAR”, “WATER RESISTANT 15 BAR” or “WATER RESISTANT 20 BAR” is inscribed on the case back, your watch is designed and manufactured to withstand up to 10 bar/15 bar/20 bar and is suitable for taking a bath, shallow diving, but not for scuba diving. We recommend that you wear a PULSAR Diver's watch for scuba diving.



English

