

SEIKO WATCH CORPORATION  
Copyright©2022 by SEIKO WATCH CORPORATION

SEIKO



العربية  
简体中文 繁體中文 한국어 ไทย



HOW TO USE

A diagram of a form layout. At the top is a thick black horizontal bar. Below it is a rounded rectangular form with a grey header bar containing a white triangle icon. The form is divided into four horizontal sections by thin lines.

HOW TO USE

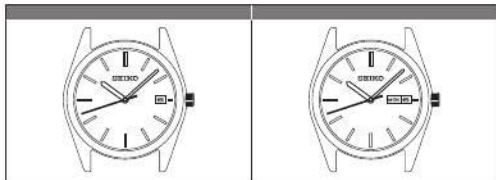
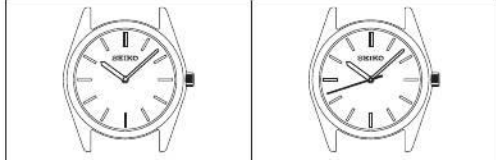
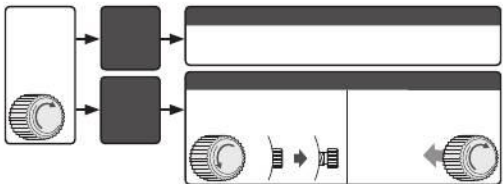
A diagram of a form layout. At the top is a thick black horizontal bar. Below it is a rounded rectangular form with a grey header bar containing a white triangle icon. The form is divided into three horizontal sections by thin lines.

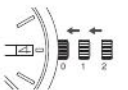
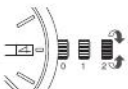
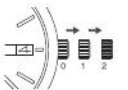
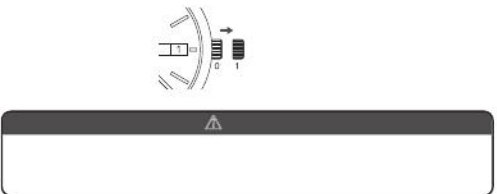
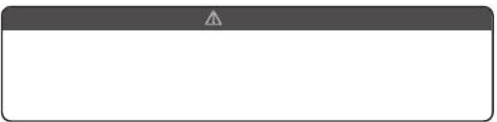


—



- ①
- ②
- ③
- ④
- ⑤












TO PRESERVE THE QUALITY OF YOUR WATCH



TO PRESERVE THE QUALITY OF YOUR WATCH



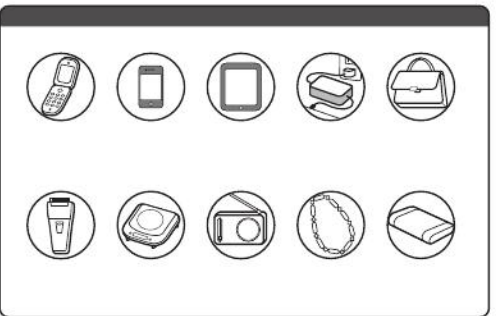
TO PRESERVE THE QUALITY OF YOUR WATCH



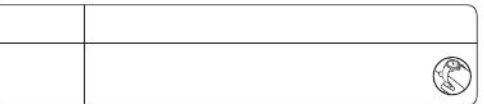
TO PRESERVE THE QUALITY OF YOUR WATCH



		⚠
( )		




		⚠
☐ ☐		
☐ ☐		



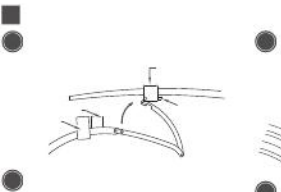
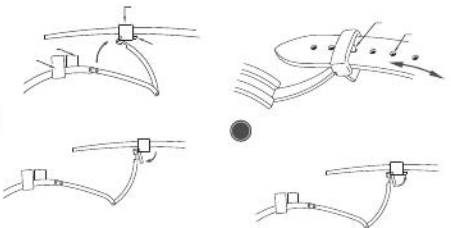
\_\_\_\_\_

\_\_\_\_\_

\_\_\_\_\_

\_\_\_\_\_

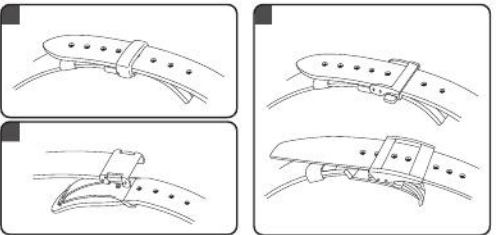
\_\_\_\_\_



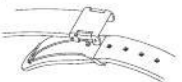
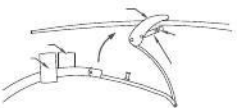
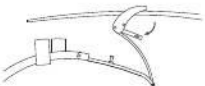
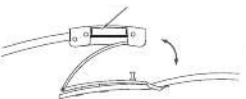
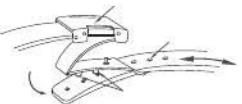
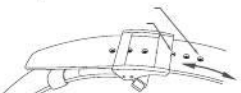
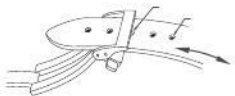
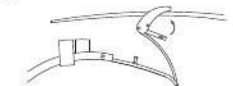
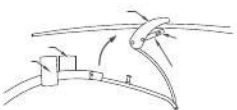
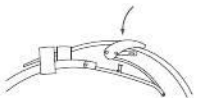
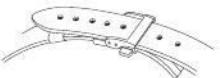
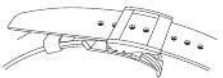
\_\_\_\_\_

\_\_\_\_\_

\_\_\_\_\_



TO PRESERVE THE QUALITY OF YOUR WATCH



TO PRESERVE THE QUALITY OF YOUR WATCH

TO PRESERVE THE QUALITY OF YOUR WATCH

TO PRESERVE THE QUALITY OF YOUR WATCH










SPECIFICATION 8


SPECIFICATION 8