



PRO TREK Smart

 Wear OS by Google

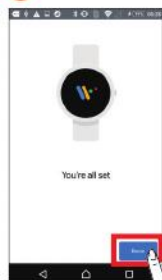
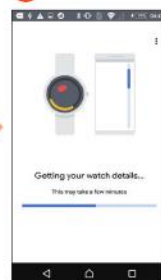
GO HARDER
WITH A WEARABLE MA



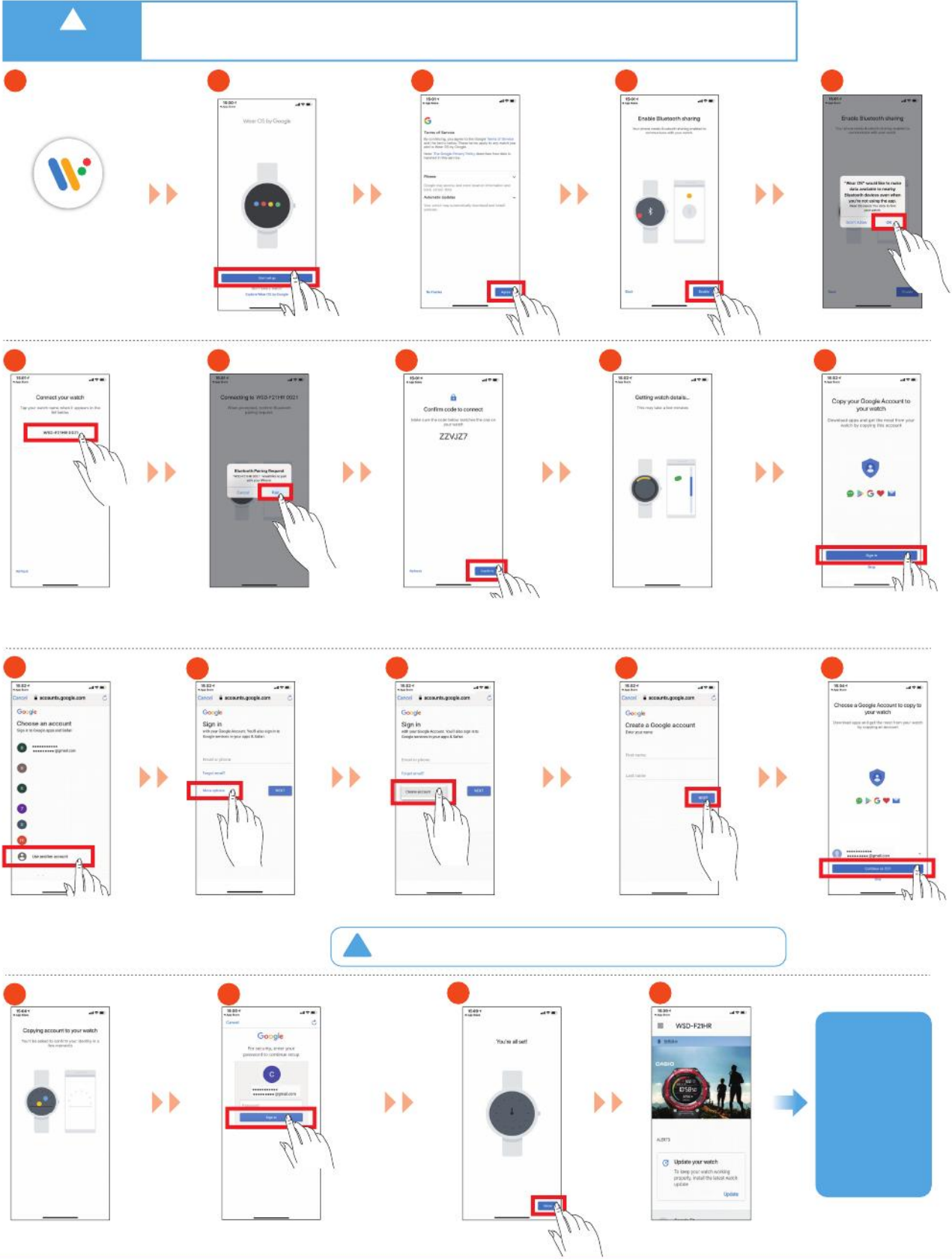
Getting Ready to Use the Product



Pairing the watch with your smartphone



Pairing the watch with your smartphone

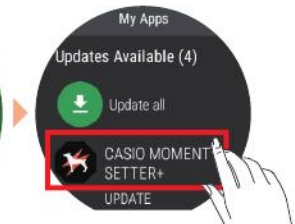
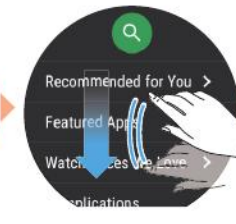




Pairing the watch with your smartphone



Press the Power



Pairing the watch with your smartphone



Press the Power button



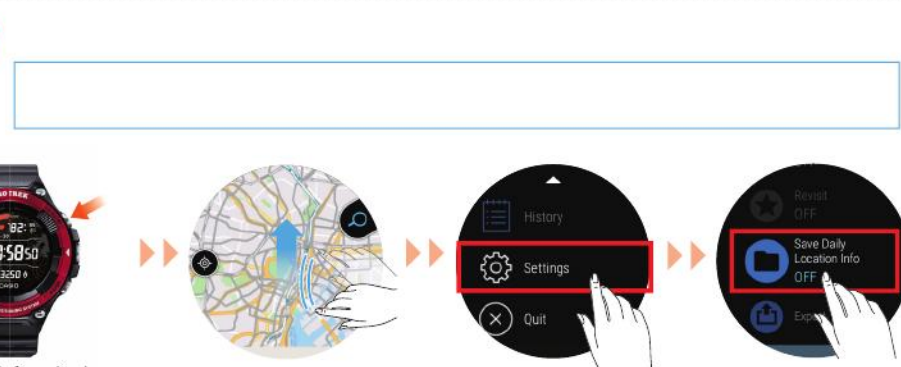
With a watch face display



Saves information about all your daily workouts. Enable this setting to use the functions below.

- Energy consumption
- Activity Graph
- Some MOMENT SETTER menu items

This function uses some user storage.

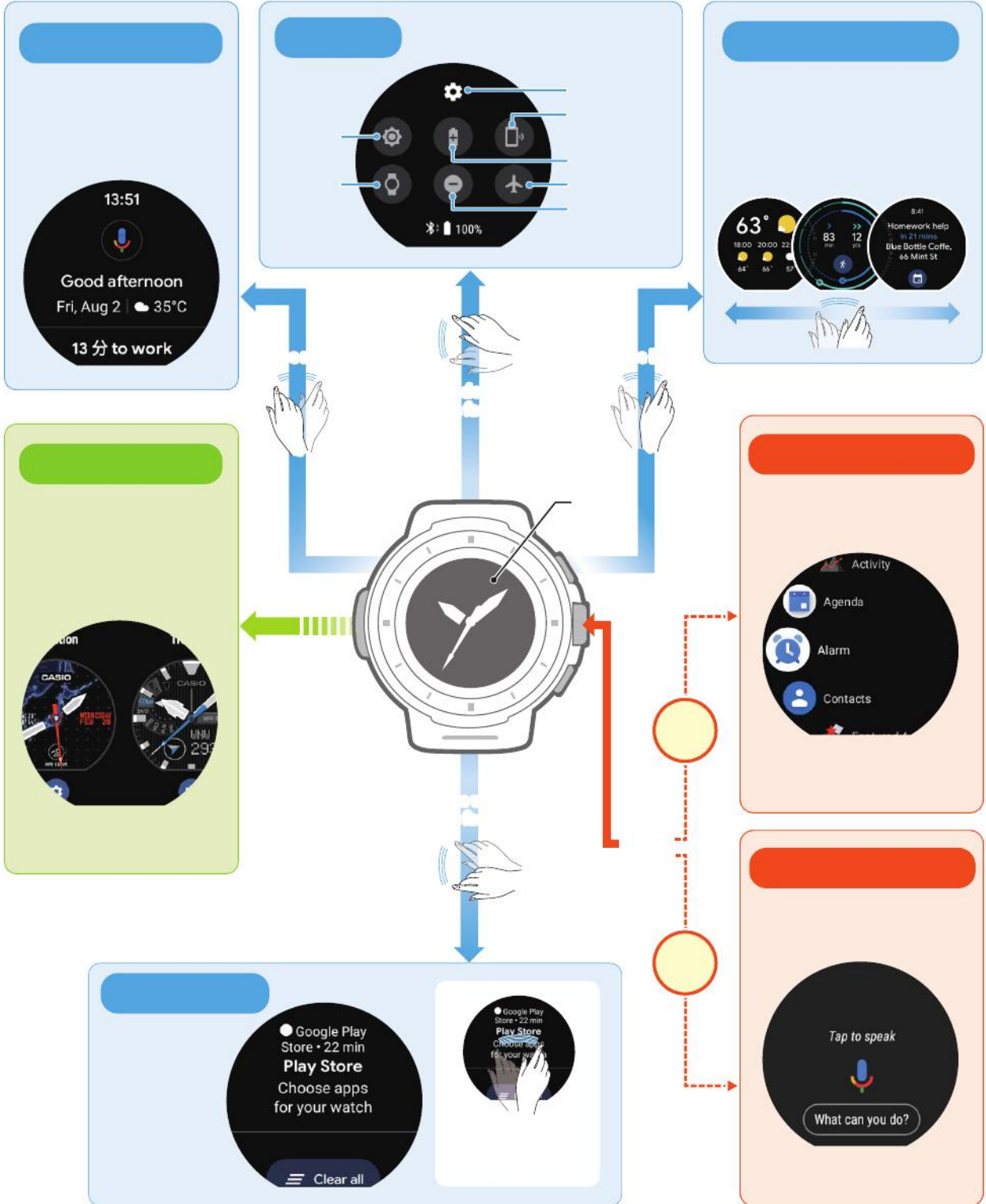


Saves all info about your daily movements. The location storage interval is somewhat irregular.

This function uses some user storage. Increasing the recording frequency will run down the battery.

- ✓ Every 1 minute
- ✓ Every 6 minutes
- ✗ OFF

↻ Main Screen Transitions



Launching/Adding apps

Launching an app



With a watch face



Adding an app

Procedure from the smartphone



Procedure from the watch



Procedure from the smartphone

Procedure from the watch

Ask your Google Assistant

Google Assistant



To set an alarm <Only one alarm can be set at a time.>

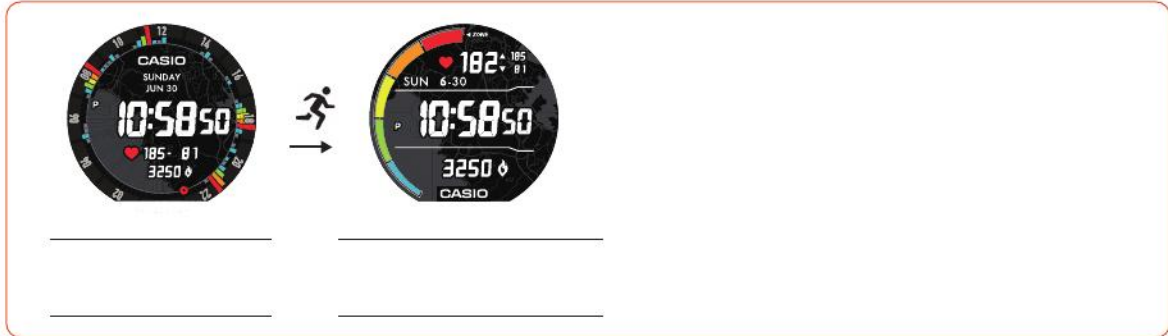


the set time is reached



Changing/Adding original watch faces

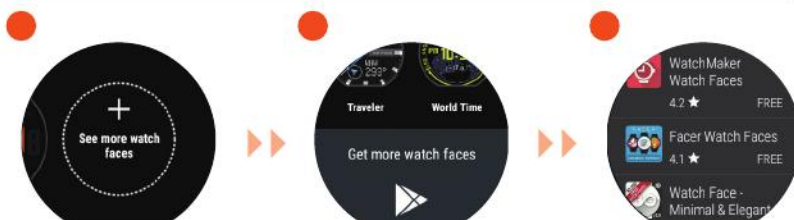
Original watch faces



Changing the watch face



Adding a watch face (on the watch)



Adding a watch face to "Favorites" (on the watch)



994
11:02:37
158

Setting



Canceling



Functions available without a smartphone connection
