

SEIKO WATCH CORPORATION

Copyright©2022 by SEIKO WATCH CORPORATION

Printed in Japan

SEIKO

العربية
简体中文 繁體中文 한국어 ไทย



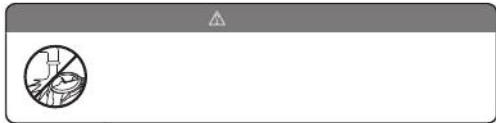
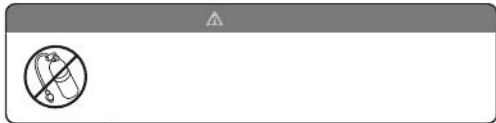
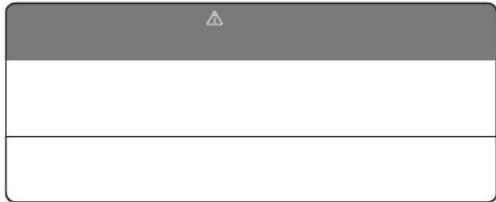
[REDACTED]

[REDACTED]

-

-

-



- This is a mechanical watch powered by a spring.
- To use it from a stopped state, turn the crown 20 turns by hand to wind up the spring before starting the watch.
- Although the accuracy of quartz watches is measured in differences over months or years, in mechanical watches it is measured in differences per day (i.e., the amount the watch speeds up or slows down in a single day).
- Additionally, mechanical watches are subtly affected by the conditions in which they are used (e.g., duration worn, temperature, arm movement, the amount wound, etc.); thus, the amount of error is not constant.
- When affected by a strong magnetism from outside, a mechanical watch may lose/gain time temporarily. The parts of the watch may become magnetized depending on the extent of the effect. In such a case, consult the retailer from whom the watch was purchased since the watch requires repair including demagnetizing.

EN 8

■ 4R35



- Minute hand
- Hour hand
- Seconds hand
- Date
- Crown
 - Normal position (not locked): Wind up the watch (hand-wound)
 - First click position: Date setting
 - Second click position: Time setting

* The position and design of the display may vary depending on the model.

EN 9

■ 4R36



- Minute hand
- Hour hand
- Seconds hand
- Date and day of the week
- Crown
 - Normal position (not locked): Wind up the watch (hand-wound)
 - First click position: Date and day of the week setting
 - Second click position: Time setting

* The position and design of the display may vary depending on the model.

EN 10

■ 4R37



- 24-hour hand
- Hour hand
- Seconds hand
- Minute hand
- Date
- Crown
 - Normal position (not locked): Wind up the watch (hand-wound)
 - First click position: Date setting
 - Second click position: Time setting

* The position and design of the display may vary depending on the model.

EN 11

■ 4R38 / 4R71 / 4R72



- ① Minute hand
- ② Hour hand
- ③ Seconds hand
- ④ Crown
 - Normal position (not locked): Wind up the watch (hand-wound)
 - First click position: Time setting

* The position and design of the display may vary depending on the model.

EN 12

■ 4R39



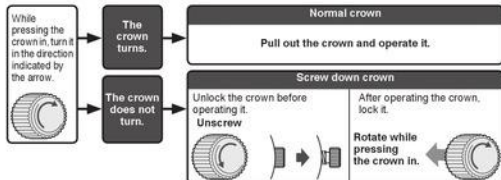
- ① 24-hour hand
- ② Hour hand
- ③ Seconds hand
- ④ Minute hand
- ⑤ Crown
 - Normal position (not locked): Wind up the watch (hand-wound)
 - First click position: Time setting

* The position and design of the display may vary depending on the model.

EN 13

Crown

There are two types of crowns, a normal crown and a screw down crown.
Please check the type of the crown of your watch.

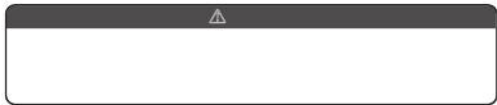


- * By locking the crown by screw, a screw down crown can prevent malfunction and increase water resistance.
- * Be careful not to screw the crown in by force as it may damage the slots of the crown.

EN 14

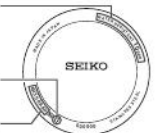
EN 15

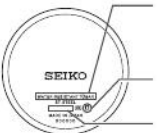


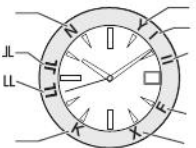




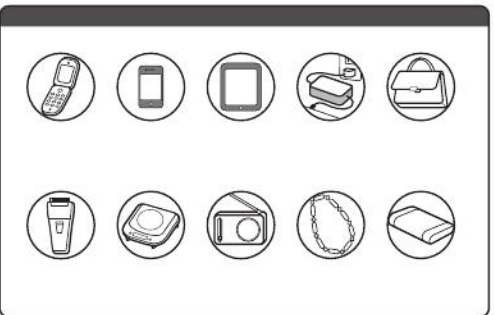




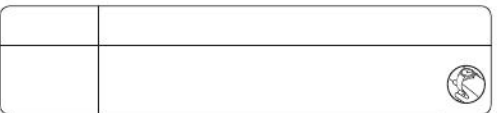
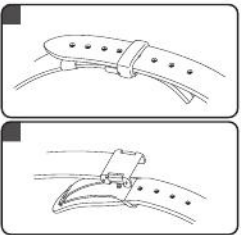
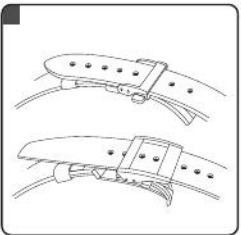


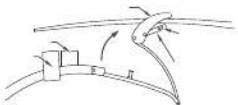
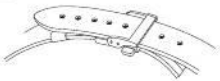
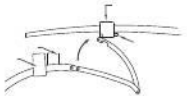
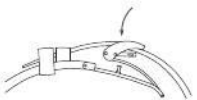
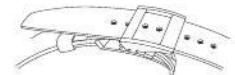
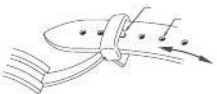
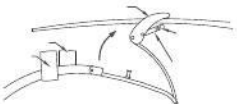
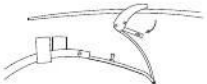
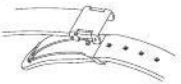
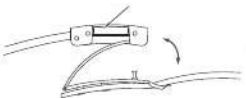
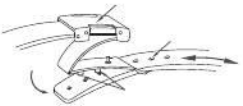


		⚠
()		

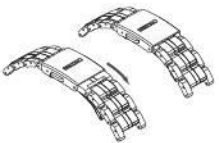


	⚠
CI	
CI	

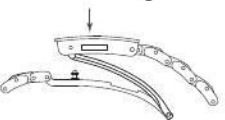
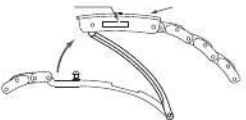
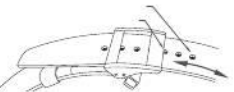
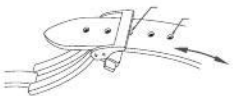
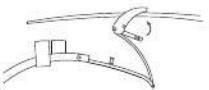
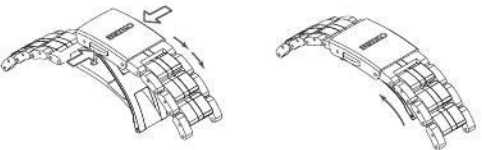




TO PRESERVE THE QUALITY OF YOUR WATCH



TO PRESERVE THE QUALITY OF YOUR WATCH



TO PRESERVE THE QUALITY OF YOUR WATCH

TO PRESERVE THE QUALITY OF YOUR WATCH

TO PRESERVE THE QUALITY OF YOUR WATCH

TO PRESERVE THE QUALITY OF YOUR WATCH

TO PRESERVE THE QUALITY OF YOUR WATCH

TO PRESERVE THE QUALITY OF YOUR WATCH

TO PRESERVE THE QUALITY OF YOUR WATCH

TO PRESERVE THE QUALITY OF YOUR WATCH

TO PRESERVE THE QUALITY OF YOUR WATCH

TO PRESERVE THE QUALITY OF YOUR WATCH

TO PRESERVE THE QUALITY OF YOUR WATCH

TO PRESERVE THE QUALITY OF YOUR WATCH