

# How To Pair Your CZ Smart Full Display Smart Watch.

Pairing your CZ Smart with your Android or iOS phone is easy. Follow these simple steps to get started.

**STEP 1** – Download and install the **CITIZEN CONNECTED** app via Apple App Store or Google Play Store.

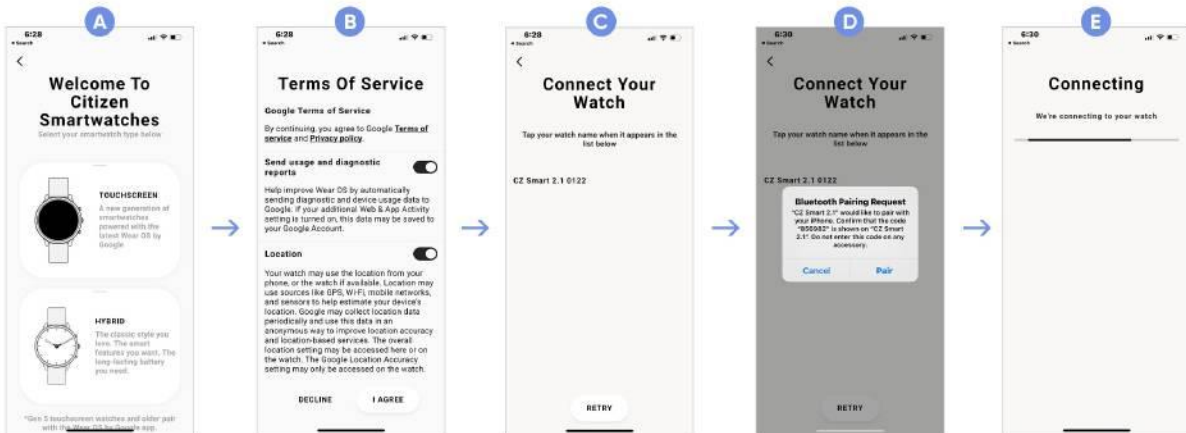
**STEP 2** – Follow the app's instructions to create a user account.

**STEP 3** – Once you enter the pairing screen, press **Touchscreen (A)** on the phone and select the language on the watch and follow the instructions on the phone.

**STEP 4** – Agree to the **Terms of Service (B)**, and select the watch name listed **(C)**.

**STEP 5** – Once you've selected the watch name, the phone will prompt to pair with the watch, press **Pair (D)**.

**STEP 6** – Follow the phone's on-screen instructions to complete the setup **(E)**.



# How To Pair the CZ Smart YouQ App With Your CZ Smart Watch

**STEP 1** – Download and install the **CZ Smart YouQ** app  via Apple App Store or Google Play Store.

**STEP 2** – Follow the on-screen instructions on (A) to continue setup.

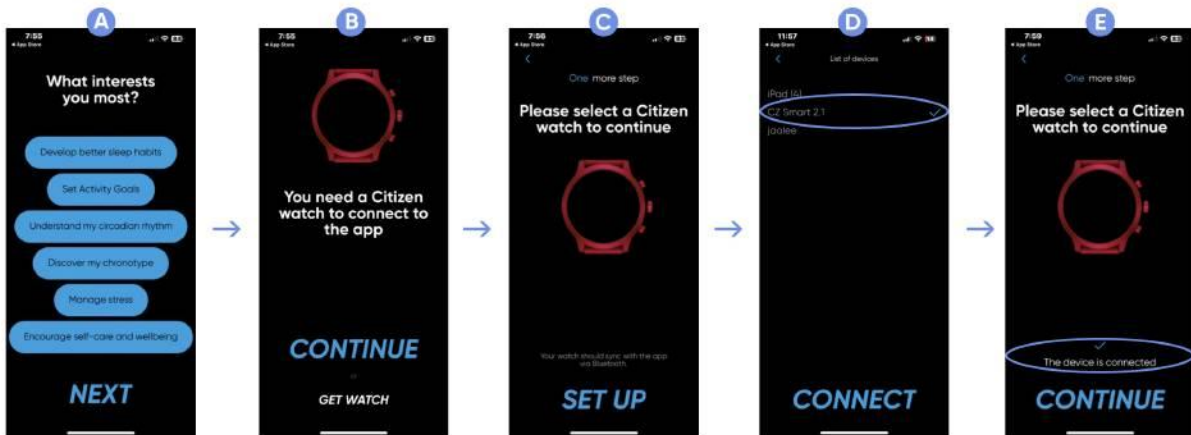
**STEP 3** – You must have a **Citizen CZ Smart Gen 2** watch to activate the **CZ Smart YouQ** app (B).

**STEP 4** – Continue to (C) to enable bluetooth.

**STEP 5** – Wait up to 3 minutes, "CZ Smart 2.1" should appear (D), select it. Press Connect.

**STEP 6** – Your device is now connected to the **YouQ** app (E).

**STEP 7** – Please proceed to \* How to login to the **YouQ** App.\*



# How To Login to the YouQ App

You must have already paired your watch with the CZ Smart YouQ app.

**STEP 1** – Select an option to login (A). Preferred option is to log in using a Google Fit/Gmail account.

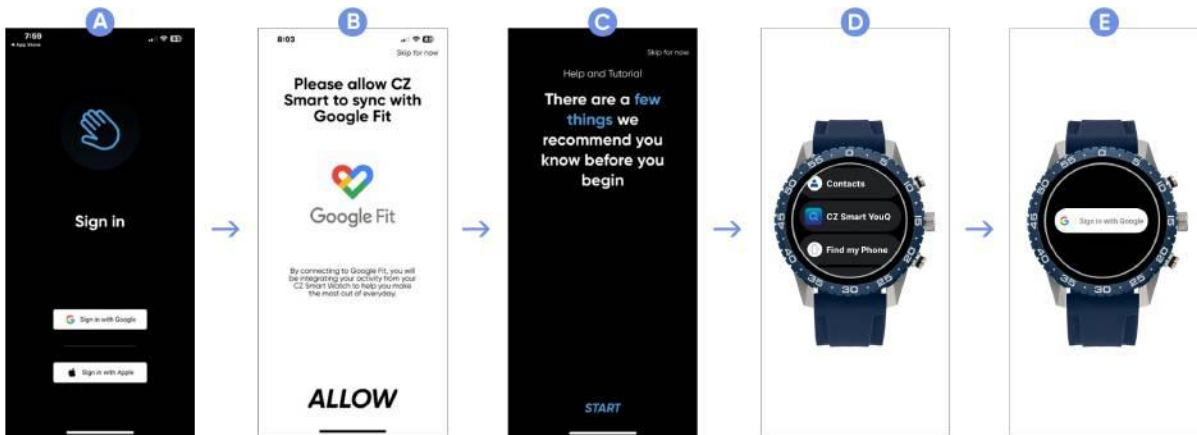
**STEP 2** – Follow the on-screen instructions on (A) to continue the new user registration process.

**STEP 3** – Once you have completed the new user registration, you will be prompted to sync your Google Fit account with **CZ Smart YouQ** (B). You must have a Google Fit account for **CZ Smart YouQ** to function properly.

**STEP 4** – Once you have completed the registration process and logged in successfully, a short tutorial is suggested (C).

**STEP 5** – Please follow the onscreen instructions to learn about **CZ Smart YouQ**.

**STEP 6** – You will want to initiate the **CZ Smart YouQ** app on your watch. Press the central pusher twice on your watch and scroll to find **CZ Smart YouQ** (D), then login (E) using the same Google Fit account you used in (B).



# How To Customize Your Dial.

**STEP 1** – Open the Citizen Connected app and be sure the watch is paired with the phone.

**STEP 2** – Tap on the watch image on the top of the screen (A).

**STEP 3** – Slide from the bottom of the screen to the top (B), to reveal the Gallery (C).

**STEP 4** – In the Gallery, tap the Star icon of the watch design you would like to select. Tap again to Apply.

**STEP 5** – Slide the gallery down to exit the gallery (D). You will see your selected watch face applied to the watch image (E).

