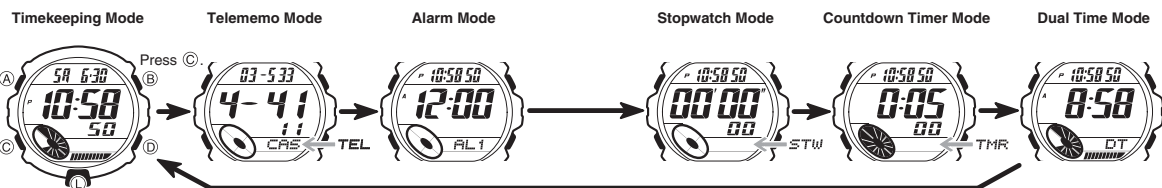
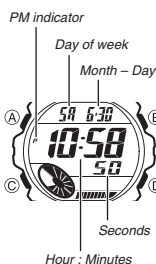


General Guide

- Press **C** to change from mode to mode.
- In any mode, press **L** to illuminate the display.



Timekeeping



Use the Timekeeping Mode to set and view the current time and date. You also use the Timekeeping Mode to select the display color pattern.

To set the time and date

1. In the Timekeeping Mode, hold down **A** until the seconds start to flash, which indicates the setting screen.
2. Press **C** to move the flashing in the sequence shown below to select other settings.



3. When the setting you want to change is flashing, use **D** and **B** to change it as described below.

| To change this setting | Perform this button operation |
|---------------------------------|---|
| Seconds | Press D to reset to 00 . |
| DST | Press D to toggle between Daylight Saving Time (ON) and standard time (OFF). |
| Hour, Minutes, Year, Month, Day | Use D (+) and B (-) to change the setting. |
| Color Pattern | Use D and B to change the color pattern setting. |

- Pressing **D** while the seconds are in the range of 30 to 59 resets them to **00** and adds 1 to the minutes. In the range of 00 to 29, the minutes are unchanged.
- See "Daylight Saving Time (DST)" for details on DST setting.
- See "Color Pattern Setting" for details about the color pattern setting.

4. Press **A** to exit the setting screen.
- The day of the week is automatically displayed in accordance with the date (year, month, and day) settings.
- The year can be set in the range of 2000 to 2039.
- The watch's built-in full automatic calendar automatically makes allowances for different month lengths and leap years. Once you set the date, there should be no reason to change it except after you have the watch's battery replaced.

To toggle between 12-hour and 24-hour timekeeping

- In the Timekeeping Mode, press **D** to toggle between 12-hour timekeeping (indicated by **A** or **P** on the display), or 24-hour timekeeping.
- With the 12-hour format, the **P** (PM) indicator appears to the left of the hour digits for times in the range of noon to 11:59 p.m. and the **A** (AM) indicator appears to the left of the hour digits for times in the range of midnight to 11:59 a.m.
 - With the 24-hour format, times are displayed in the range of 0:00 to 23:59, without any indicator.
 - The 12-hour/24-hour timekeeping format you select in the Timekeeping Mode is applied in all modes.

Daylight Saving Time (DST)

Daylight Saving Time (summer time) advances the time setting by one hour from Standard Time. Remember that not all countries or even local areas use Daylight Saving Time.

To toggle the Timekeeping Mode time between DST and Standard Time



1. In the Timekeeping Mode, hold down **A** until the seconds start to flash, which indicates the setting screen.
2. Press **C** once to display the DST setting screen, which is indicated by a flashing **ON** (DST on) or **OFF** (DST off) indicator.
3. Press **D** to toggle between Daylight Saving Time (**ON** displayed) and standard time (**OFF** displayed).
4. Press **A** to exit the setting screen.
- The **DST** indicator appears on the display to indicate that daylight saving time is turned on.

Color Pattern Setting

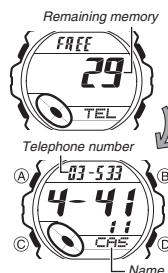
This watch is equipped with two color LCD panels, which provide a choice of 12 different color patterns from which you can choose.

To change the color pattern setting



1. In the Timekeeping Mode, hold down **A** until the seconds start to flash, which indicates the setting screen.
2. Use **C** to cycle through the available setting screens until the color pattern setting screen (indicated by the flashing **COL** indicator) is on the display.
3. Use **B** and **D** to select the color pattern you want.
4. Press **A** to exit the setting screen.

Telememo



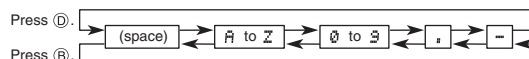
Telememo lets you store up to 30 records, each containing name and telephone number. Records are automatically sorted based on the characters of the name. You can recall records by scrolling through them on the display.

- See "Character List" at the back of this manual for details on how the watch sorts records.
- All of the operations in this section are performed in the Telememo Mode, which you enter by pressing **C**.

To create a new Telememo record



1. In the Telememo Mode, use **B** and **D** to cycle through the record screens until the new data screen appears.
 - The new data screen is the one that is blank (contains no name and telephone number).
 - If the new data screen does not appear, it means that memory is full. To store another record, you will first have to delete some of the records stored in memory.
2. Hold down **A** until the flashing cursor (—) appears in the name area of the display, which indicates the setting screen.
3. Use **D** and **B** to change the character at the cursor position in the name area. The character changes in the following sequence.



4. When the character you want is at the cursor position, press **C** to move the cursor to the right.
5. Repeat steps 3 and 4 until the name is complete.
 - You can input up to eight characters for the name.
6. After you input the name, press **C** as many times as necessary to move the cursor to the number area.
 - When the cursor is located at the eighth space of the name area, moving the cursor to the right causes it to jump to the first digit of the number. When the cursor is at the 12th digit of the number, moving it to the right (by pressing **C**) causes it to jump to the first character in the name.
7. Use **D** and **B** to change the character (hyphen, number, or space) at the cursor position in the number area. The character changes in the following sequence.



8. When the character you want is at the cursor position, press **C** to move the cursor to the right.
9. Repeat steps 7 and 8 until you complete number input.
 - You can input up to 12 digits for the number.
 - The number initially contains all hyphens. You can leave the hyphens or replace them with numbers or spaces.
10. Press **A** to store your data and return to the Telememo record screen (without the cursor).
 - The name can show only three characters at a time, so longer text scrolls continuously from right to left. The last character is indicated by the symbol **I** after it.

To recall Telememo records

In the Telememo Mode, use **D** (+) and **B** (-) to scroll through Telememo records on the display.

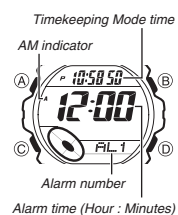
To edit a Telememo record

1. In the Telememo Mode, scroll through the records and display the one you want to edit.
2. Hold down **A** until the flashing cursor appears on the display.
3. Use **C** to move the flashing to the character you want to change.
4. Use **B** and **D** to change the character.
 - For details on inputting characters, see "To create a new Telememo record" (step 3 for name input and 7 for number input).
5. After making the changes that you want, press **A** to store them and return to the Telememo record screen.

To delete a Telememo record

1. In the Telememo Mode, scroll through the records and display the one you want to delete.
2. Hold down **A** until the flashing cursor appears on the display.
3. Press **B** and **D** at the same time to delete the record.
 - The message **DEL** appears to indicate that the record is being deleted. After the record is deleted, the cursor appears on the display, ready for input.
4. Input data or press **A** to return to the Telememo record screen.

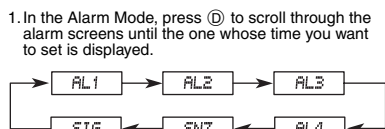
Alarms



You can set five independent Daily Alarms. When an alarm is turned on, the alarm tone sounds when the alarm time is reached. One of the alarms is a snooze alarm, while the other four are normal (non-snooze) alarms that sound for 20 seconds. You can also turn on an Hourly Time Signal that causes the watch to beep twice every hour on the hour.

- The snooze alarm repeats every five minutes, up to seven times.
- The alarm number of the display indicates the alarm type, as described below.
 - AL1 through AL4: Normal alarm screen
 - SNZ: Snooze alarm screen
 - SIG: Hourly Time Signal screen
- Alarm settings (and Hourly Time Signal settings) are available in the Alarm Mode, which you enter by pressing (C).

To set an alarm time



- In the Alarm Mode, press (D) to scroll through the alarm screens until the one whose time you want to set is displayed.
- After you select an alarm, hold down (A) until the hour setting of the alarm time starts to flash, which indicates the setting screen.
 - This operation automatically turns on the alarm.
- Press (C) to move the flashing between the hour and minute settings.
- While a setting is flashing, use (D) (+) and (B) (-) to change it.
 - When setting the alarm time using the 12-hour format, take care to set the time correctly as a.m. (A indicator) or p.m. (P indicator).
- Press (A) to exit the setting screen.

Alarm Operation

Starting from the point the Timekeeping Mode time reaches one hour before an alarm time the display pattern changes each second. This pre-alarm feature lets you know that an alarm time is about to be reached. When the actual alarm time is reached, an alarm tone sounds for 20 seconds. In the case of the snooze alarm, the alarm repeats up to seven times every five minutes until the alarm is turned off.

- Pressing any button stops the pre-alarm operation or the alarm tone operation.
- The pre-alarm feature works in the Timekeeping Mode only.

To test the alarm

In the Alarm Mode, hold down (B) to sound the alarm.

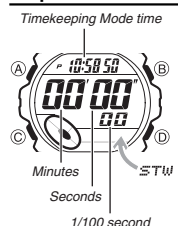
To turn a normal 20-second alarm and the Hourly Time Signal on and off

- In the Alarm Mode, press (D) to select an normal 20-second alarm (AL1 through AL4) or the Hourly Time Signal (SIG).
- When the alarm or the Hourly Time Signal you want is selected, press (B) to turn it on and off.
 - Indicates alarm is on.
 - ▲ Indicates Hourly Time Signal is on.
 - The alarm on indicator (■■■■) and the Hourly Time Signal on indicator (▲) are shown on the display in all modes while these functions are turned on.
 - If any alarm is on, the alarm on indicator is shown on the display when you change to another mode.

To turn the snooze alarm on and off

- In the Alarm Mode, press (D) to select the snooze alarm (SNZ).
- Press (B) to turn it on (SNZ and ■■■■ displayed) and off (SNZ and ■■■■ not displayed).
- The snooze alarm on indicator (SNZ ■■■■) is shown on the display in all modes while this function is turned on.

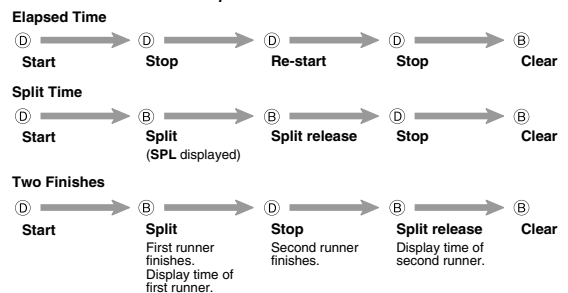
Stopwatch



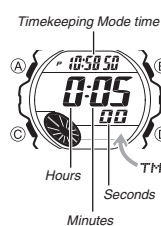
The stopwatch lets you measure elapsed time, split times, and two finishes.

- The display range of the stopwatch is 59 minutes, 59.99 seconds.
- The stopwatch continues to run, restarting from zero after it reaches its limit, until you stop it.
- The stopwatch measurement operation continues even if you exit the Stopwatch Mode.
- Exiting the Stopwatch Mode while a split time is frozen on the display clears the split time and returns to elapsed time measurement.
- All of the operations in this section are performed in the Stopwatch Mode, which you enter by pressing (C).

To measure times with the stopwatch



Countdown Timer



The countdown timer can be set within a range of 1 minute to 24 hours. An alarm sounds when the countdown reaches zero.

- The initial default countdown start time when you purchase the watch or after you have its battery replaced is 5 minutes.
- Countdown timer functions are available in the Countdown Timer Mode, which you enter by pressing (C).

To use the countdown timer

Press (D) while in the Countdown Timer Mode to start the countdown timer.

- When the end of the countdown is reached, the alarm sounds for 10 seconds or until you stop it by pressing any button. The countdown time is automatically reset to its starting value after the alarm stops.

- Press (D) while a countdown operation is in progress to pause it. Press (D) again to resume the countdown.
- To completely stop a countdown operation, first pause it (by pressing (D)), and then press (B). This returns the countdown time to its starting value.

To set the countdown start time

- In the Countdown Timer Mode, hold down (A) until the hour setting of the countdown start time starts to flash, which indicates the setting screen.
- Press (C) to move the flashing between the hour and minute settings.
- While a setting is flashing, use (D) (+) and (B) (-) to change it.
 - To set the starting value of the countdown time to 24 hours, set 0:00.
- Press (A) to exit the setting screen.

Dual Time



The Dual Time Mode lets you keep track of time in a different time zone.

To set the Dual Time

- Press (C) to enter the Dual Time Mode.
- Use (D), (B), and (A) to set the Dual Time Mode time.
 - Each press of (D) (+) and (B) (-) changes the time setting in 30-minute increments.
 - Pressing (A) sets the Dual Time Mode to the same time as the Timekeeping Mode.

Reference

This section contains more detailed and technical information about watch operation. It also contains important precautions and notes about the various features and functions of this watch.

Auto Display



The Auto Display feature of this watch automatically cycles through the available color patterns.

To turn off Auto Display

- Press any button to turn off Auto Display. Doing so also performs the corresponding button function as described below.
- (A) or (B): Enters the Timekeeping Mode.
 - (C): Enters the Telememo Mode.
 - (D): Toggles between 12-hour and 24-hour formats.
 - (L): Turns on the backlight
 - Turning off Auto Display also returns to the default color pattern.

To turn on Auto Display

- Hold down (C) for about two seconds until the watch beeps.
- Note that Auto Display cannot be performed while a setting screen is on the display.

Auto Return Features

- If you leave the watch in the Telememo Mode for two or three minutes without performing any operation, it automatically changes to the Timekeeping Mode.
- If you leave a screen with flashing digits or a cursor on the display for two or three minutes without performing any operation, the watch automatically saves any settings you have made up to that point and exits the setting screen.

Data and Setting Scrolling

The (B) and (D) buttons are used in various modes and setting screens to scroll through data on the display. In most cases, holding down these buttons during a scroll operation scrolls through the data at high speed.

Initial Screens

When you enter the Telememo or Alarm Mode, the data you were viewing when you last exited the mode appears first.

Backlight Precautions

- The backlight uses an EL (electro-luminescent) panel that causes the entire display to glow for easy reading in the dark.
- In any mode, press (L) to illuminate the display for about two seconds.
 - The electro-luminescent panel that provides illumination loses power after very long use.
 - The illumination provided by the backlight may be hard to see when viewed under direct sunlight.
 - The watch may emit an audible sound whenever the display is illuminated. This is due to vibration of the EL panel used for illumination, and does not indicate malfunction.
 - The backlight automatically turns off whenever an alarm sounds.
 - Frequent use of the backlight shortens the battery life.