

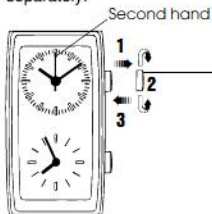
PULSAR

CAL. Y15W (Series PVQ) TWIN QUARTZ

- Two time displays
- Three-hand display
- Two-hand display
- Dual time display

TIME SETTING

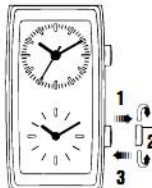
- The two time displays operate independently and, therefore, should be set separately.



TIME SETTING OF THE UPPER DISPLAY

CROWN 1

- 1 Pull out when the second hand is at the 12 o'clock position.
- 2 Turn to set the hands to the desired time.
- 3 Push back in accordance with a time signal.



TIME SETTING OF THE LOWER DISPLAY

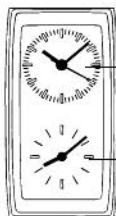
CROWN 2

- 1 Pull out.
- 2 Turn to set the hands to the desired time.
- 3 Push back in accordance with a time signal.

- When setting the minute hand of each time display, first advance it 4 to 5 minutes ahead of the desired time and then turn it back to the exact minute.

DUAL TIME DISPLAY

- The times of two areas in different time zones can be shown at a time.
- This is very convenient when you travel abroad. You can set the time of a city you are visiting on one display while the time back home is displayed on the other display.



Ex.

Current time of the place you visit: 10:08

Current time of your area: 8:08

BATTERY CHANGE

**2
Years**

Battery life : Approx. 2 years for each battery

Battery : SEIKO SR416SW and SR421SW

- The two time displays are powered by two different batteries.
- When the second hand of the upper time display starts moving at two-second intervals instead of the normal one-second intervals, or when either of the two batteries expires, be sure to replace both of them at a time as soon as possible to prevent any malfunction.