

SEIKO WATCH CORPORATION

**SEIKO**  
**GS**  
**Grand Seiko**

**9S51 • 9S55 • 9S56**  
**INSTRUCTION**

SEIKO WATCH CORPORATION

**SEIKO**

**GS**

**Grand Seiko**

**9S51 • 9S55 • 9S56**

**INSTRUCTION**

You are now the proud owner of a GRAND SEIKO watch. GRAND SEIKO watches are designed and manufactured to realize close-to-perfect mechanism and product quality by taking advantage of SEIKO's more than 100 years of experience in watchmaking.

To preserve the highest quality of your GRAND SEIKO watch, please read the instructions in this booklet carefully for its proper use and care, and keep this booklet for ready reference.

# CONTENTS

■ HOW TO USE .....	4
■ TO PRESERVE THE QUALITY OF YOUR WATCH .....	22
■ TROUBLE SHOOTING .....	28
■ SPECIFICATIONS .....	29
■ REMARKS ON REPLACEMENT PARTS .....	30

## ■ HOW TO USE

### ※ How to use the automatic mechanical watch (9S51 · 9S55 · 9S56)

This is an automatic mechanical watch with manual winding mechanism.

- If the watch is worn on the wrist, the mainspring will be wound automatically through normal wrist movement.

It can also be wound up by turning the crown.

- To start the watch after it stops completely, wind it up either by turning the crown or swinging it from side to side until the second hand starts moving. Then, set the time and date before wearing the watch on the wrist.

4

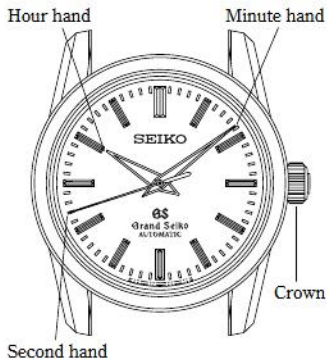


- To wind up the watch by turning the crown, turn it clockwise slowly. The watch cannot be wound by turning the crown counterclockwise. About 40 turns of the crown will wind up the watch fully. Please note that the crown can be turned even after the watch is wound up fully.
- Once the watch is wound up fully, it operates for about 50 hours. (If the watch is used without being wound up fully, gain or loss of time may result. To avoid this, wear the watch for more than 10 hours a day.) If the watch is used without wearing on the wrist ; if it is used on the desk, for example : be sure to wind it up fully every day at a fixed time.

## 1. 3 HANDS WITHOUT DATE (cal. 9S51)

<Parts of your Grand Seiko watch>

6



<To set the time>

1



Confirm the second hand is moving and pull out the crown when the second hand is at the 12 o'clock position.

The second hand will stop on the spot.

If the crown is of the screw lock type, unscrew the crown by turning it counterclockwise, and then pull it out.

2



Turn the crown to set the hour and minute hands to the desired time.

※The mechanism of the mechanical watch is different from that of the quartz one. To set the time accurately, first turn the minute hand 4 to 5 minutes behind the desired time and then advance it to the correct time.

3

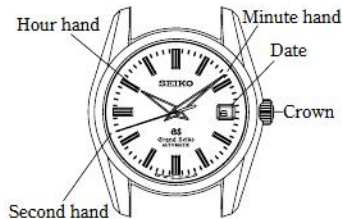


Push the crown back in to the normal position in accordance with a time signal for "00" seconds. The second hand will start moving immediately.

If the crown is of the screw lock type, screw it in completely by turning it clockwise while pressing it.

## 2. 3 HANDS WITH DATE (cal. 9S55)

<Parts of your Grand Seiko watch>



8

The watch is provided with a date function and is so designed that the date changes once every 24 hours.

The date changes around 12 o'clock midnight. If AM/PM is not properly set, the date will change at 12 o'clock noon.

<To set the time and date>

1



First, set the date. Pull out the crown to the first click.

If the crown is of the screw lock type, unscrew the crown by turning it counterclockwise, and then pull it out.

2



Turn the crown until the previous date appears.  
For example, if today is the 6th of the month, first set the date to "5".

9

- Do not set the date between 10:00p.m. and 1:00a.m. Otherwise, the date may not change properly.

3



10

Confirm the second hand is moving and pull out the crown to the second click when the second hand is at the 12 o'clock position.

The second hand will stop on the spot. Advance the hour and minute hands until the desired date appears. The time is now set for the A.M. period. Keep advancing the hands until the correct time.

※The mechanism of the mechanical watch is different from that of the quartz one. To set the time accurately, first turn the minute hand 4 to 5 minutes behind the desired time and then advance it to the correct time.

4



Push the crown back in to the normal position in accordance with a time signal for "00" seconds. The second hand will start moving immediately.

If the crown is of the screw lock type, screw it in completely by turning it clockwise while pressing it.

#### <Date adjustment at the end of the month>

It is necessary to adjust the date at the end of February and a 30-day month.

EXAMPLE: To adjust the date in the A.M. period on the first day of a month following a 30-day month

- ① The watch displays "31" instead of "1". Pull out the crown to the first click.

If the crown is of the screw lock type, unscrew the crown by turning it counterclockwise, and then pull it out.

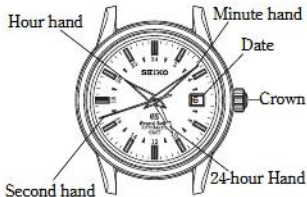
- ② Turn the crown clockwise to set the date to "1" and then push it back to the normal position.

If the crown is of the screw lock type, screw it in completely by turning it clockwise while pressing it.

· Do not set the date between 10:00p.m. and 1:00a.m. Otherwise, the date may not change properly.

### 3. 3 HANDS WITH 24-HOUR HAND (cal. 9S56)

<Parts of your Grand Seiko watch>



12

This watch, Cal.9S56, features a time difference adjustment function.

Two different time zones can be displayed at the same time when you set the hour hand and 24-hour hand respectively in accordance with each time zone.

※The hour hand and the date may not indicate the desired time and date. It is not necessary to adjust them at this step as they can be adjusted independently later. (→Refer to P.13 and P.20~21)

※To set the time accurately, first turn the minute hand about 5 minutes behind the desired time and then advance it slowly to the correct time.

<To set the 24-hour hand to the current time of your area>

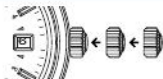
- 1 Pull out the crown to the second click when the second hand is at the 12 o'clock position. The second hand stops on the spot.
- 2 Turn the crown clockwise to set the 24-hour and minute hands to the current time of your area. Check that AM/PM is correctly set.



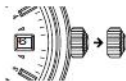
<Example>

To set 10:00 AM,  
set the 24-hour hand to the 5 o'clock position and the minute hand to the 12 o'clock position.

To set 6:00 PM,  
set the 24-hour hand to the 9 o'clock position and the minute hand to the 12 o'clock position.

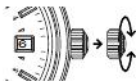


- ③ Push the crown back in to the normal position in accordance with a time signal for "00" seconds. Adjustments of the 24-hour, minute and second hands have been completed.



- ④ Then, pull out the crown to the first click and turn it to set the hour hand to the current time.

■ The date can be adjusted at this step. (To do so, refer to P.20~21 to set the date.)



※Check that AM/PM is correctly set by turning the hour hand past the 12 o'clock marker. If the date changes to the next, the time is set for the AM period. If the date does not change, the time is set for the PM period.

※When setting the hour hand, other hands may move slightly. However, this is not a malfunction.

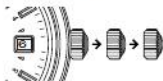


- ⑤ After setting the hour hand, push back the crown in to the normal position.

The time setting procedure has been completed.

<To set the 24-hour hand to the time of an area in a different time zone>

For example, set the 24-hour hand to Greenwich Mean Time and the hour hand to the current time of Japan



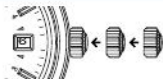
- 1 Pull out the crown to the second click when the second hand is at the 12 o'clock. The second hand stops on the spot.
- 2 Turn the crown clockwise to set the 24-hour and minute hands to the Greenwich Mean Time. Check that AM/PM is correctly set.

<Example>

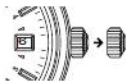
- 14 When it is 10:00 AM in Japan, the time difference between Greenwich Mean Time and the time in Japan is -9 hours, so it is 1:00 AM on Greenwich Mean Time. Therefore, set the 24-hour hand to the middle point between the 12 o'clock and 1 o'clock position, and the minute hand to the 12 o'clock position.



※To set the time accurately, first turn the minute hand about 5 minutes behind the desired time and then advance it slowly to the correct time.

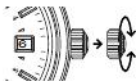


- ③ Push the crown back into the unscrewed position in accordance with a time signal for "00" seconds. Adjustments of the 24-hour, minute and second hands have been completed.



- ④ Then, pull out the crown to the first click and turn it to set the hour hand to the time in Japan.

■ The date can be adjusted at this step. (To set the date, refer to P.20 ~21.)



※Check that AM/PM is correctly set by turning the hour hand past the 12 o'clock marker. If the date changes to the next date, the time is set for the AM period. (ie : 12 o'clock-midnight.) If the date does not change, the time is set for the PM period. (ie : 12 o'clock-noon.)

※When setting the hour hand, other hands may move slightly. However, this is not a malfunction.



- ⑤ After setting the hour hand, push back the crown in to the normal position.

The time setting procedure has been completed.

The 24-hour hand shows the time of an area in a different time zone, while the current time in the place you are is shown by the hour hand independently of the 24-hour hand. To set the 24-hour hand to the time of another area in a different time zone, repeat the steps from ①.

### <Time difference adjustment>

Time difference adjustment enables you to adjust the hour hand only in one-hour increments by easy operation without stopping the minute and second hands. It is convenient when adjusting the time based on a different time zone while you travel abroad.

#### ■ How to determine the time differences between two areas

- Before making the time difference adjustment, it is necessary to obtain the time differences between the two areas.

#### <How to calculate the time differences>

Assuming that you move from time zone "A" to time zone "B" and that the time difference from GMT for the two time zones are "a" and "b", respectively, the time difference between them can be obtained from the following formula:  $[b] - [a]$

16

#### <Example : If you move from Japan to New York>

Time difference from GMT for Japan,

time zone A:  $[a] = +9$

Time difference from GMT for New York,

time zone B:  $[b] = -5$

○ Time difference between the two cities is:

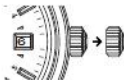
$$[b] - [a] = (-5) - (+9) = (-14) \text{ hours}$$

※ Time difference from GMT is shown in P.18.

※ If daylight saving time is in effect in an area, there will be a one hour to the time difference from GMT.

## ■ Time difference adjustment

- Set the hour hand to the time of any area using the time difference obtained in "How to calculate the time differences"



① Pull out the crown to the first click.

② Turn the crown to set the hour hand to the time of any area.

※When setting the hour hand, other hands may move slightly. However, this is not a malfunction.

※If you need to set the date between 10 PM and 0 AM by turning the hour hand counterclockwise, turn the hour hand until it shows sometime between 9 PM and 10 PM once, then set the date. In case the hour hand is turned counterclockwise, the date will be moved back when the hour hand shows around 10 PM, however, it is not a malfunction.



clockwise :  
the hour hand  
turns clockwise

counterclockwise :  
the hour hand  
turns counterclockwise



③ After setting the hour hand, push back the crown into the normal position.

Tokyo	GMT	+09:00	Paris	GMT	+01:00
Seoul	GMT	+09:00	Madrid	GMT	+01:00
Beijing	GMT	+08:00	London	GMT	0:00
Hong Kong	GMT	+08:00	Dakar	GMT	0:00
Bangkok	GMT	+07:00	Rio De Janeiro	GMT	-03:00
Tashkent	GMT	+06:00	La Paz	GMT	-04:00
Karachi	GMT	+05:00	Santiago	GMT	-05:00
Moscow	GMT	+03:00	New York	GMT	-05:00
Nairobi	GMT	+03:00	Mexico City	GMT	-06:00
Cairo	GMT	+02:00	Los Angeles	GMT	-08:00
Istanbul	GMT	+02:00	Anchorage	GMT	-09:00
Johannesburg	GMT	+02:00	Auckland	GMT	+12:00
Rome	GMT	+01:00	Sydney	GMT	+10:00

GMT : Greenwich Mean Time



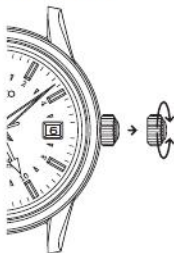
## <To set the date>

20



The date can be changed by turning the hour hand one or two full circles, using it as "time difference adjustment".

clockwise :  
The hour hand turns clockwise, and the date advances.



- ① Pull out the crown to the first click.
- ② Turn the crown to set the date. By turning the hour hand at the maximum two full circles clockwise or counterclockwise, one day is advanced or put back, respectively.

counterclockwise :  
The hour hand turns counterclockwise, and the date is put back.

③ After setting the date, reset hour hand to the current hour, and then, push the crown back.

※Check that AM/PM is correctly set by turning the hour hand past the 12 o'clock marker. If the date changes to the next date, the time is set for the AM period. If the date does not change, the time is set for the PM period.

※If you set the date between 10 PM and 0 AM by turning the hour hand counterclockwise, turn the hour hand until it shows sometime between 9 PM and 10 PM once, then set the date. In the case the hour hand is turned counterclockwise, the date will be put back when the hour hand shows around 10 PM, however, it is not a malfunction

#### **[Date adjustment at the end of the month]**

It is necessary to adjust the date at the end of February and a 30-day month.

〈Example : To adjust the date in the AM period on the first day of a month following a 30-day month.〉

①The watch displays "31" instead of "1". Pull out the crown to the first click.

If the crown is of the screw lock type, unscrew the crown by turning it counterclockwise, and then pull it out.

②Turn the crown clockwise to set the date to "1" and then push it back to the normal position.

If the crown is of the screw lock type, screw it in completely by turning it clockwise while pressing it.

## ■ TO PRESERVE THE QUALITY OF YOUR WATCH

### ⚠ CAUTION

#### ● CARE OF YOUR WATCH

- The case and bracelet are direct constant touch with the skin. If they are left dirty, the edge of a sleeve may be stained or those who have a delicate skin may develop a rash.
- After removing the watch from your wrist, wipe off any perspiration or moisture with a soft cloth. This will prevent the watch from being soiled, adding to the life of the gasket.

#### <LEATHER BAND>

- When removing moisture from a leather band, do not rub the band with the cloth as this may discolor it or reduce its gloss. Be sure to blot up the moisture using a soft dry cloth.

#### <METAL BRACELET>

- Clean the watch bracelet with a soft toothbrush dipped in clear or soapy water.

 CAUTION








● RASH AND ALLERGY

- Adjust the bracelet and band so that there will be a little clearance between the bracelet or band and your wrist to avoid accumulation of perspiration.
- If you are constitutionally predisposed to rash, the band may cause you to develop a rash or an itch depending on your physical condition.
- The possible cause of a rash are as follows:
  1. Allergy to metals or leathers
  2. Rust, dust or perspiration on the watch or band
- If you develop any skin reactions, take off the watch and consult a doctor immediately.

**⚠ CAUTION**

**● WATER RESISTANCE**

- Check the dial or case back of your watch for the water resistant quality, and then see the table below.
- Do not turn or pull out the crown when the watch is wet, as water may get inside the watch.

Indication for water resistance a: Indication on the dial b: Indication on the case back		Condition of use  Degree of water resistance							
			Designed and manufactured to withstand accidental contact with water such as splashes and rain.	Suitable for swimming, yachting and other aquatic sports as well as for works closely associated with water such as kitchen work, watering and fishing.	Suitable for shallow diving without a heavy breathing apparatus.	Genuine diving using scuba.	Genuine diving using helmets.		
a	No indication	No water resistance	✗	✗	✗	✗	✗	✗	✗
b	No indication								
a	No indication	Water resistance (3 bar)	○	✗	✗	✗	✗	✗	✗
b	WATER RESIST								
a	No indication	Water resistance (5 bar)	○	○	✗	✗	✗	✗	✗
b	WATER RESIST or WATER RESIST 5 BAR								
a	No indication, or WATER RESIST 10 BAR	Water resistance (10 bar)	○	○	○	✗	✗	✗	✗
b	WATER RESIST 10 BAR								
a	No indication, or WATER RESIST 20 BAR	Water resistance (20 bar)	○	○	○	✗	✗	✗	✗
b	WATER RESIST 20 BAR								

 **WARNING**

- If your watch is 3 bar water resistant, do not use it in water.
- If your watch is 5 bar water resistant, do not use it in any type of diving including skin diving.
- If your watch is 10 or 20 bar water resistant, do not use it in saturation diving or scuba diving.

● **PRECAUTIONS ON WEARING YOUR WATCH**

- Take care in case you tumble and fall or bump into others when wearing the watch on your wrist, you may be injured due to the fact that you are wearing the watch.
- Should you collide with children, especially with infants, they may get injured or develop an allergic rash.
- Do not drop the watch or hit it against a hard surface, and not wear the watch while playing active sports. The watch may gain/lose time.

## ● PLACES TO KEEP YOUR WATCH

- If the watch is left in a temperature below  $-10^{\circ}\text{C}$  or above  $+60^{\circ}\text{C}$  for a long time it may function improperly or stop operating.
- Do not leave the watch in a place where it is subjected to strong magnetism or static electricity.
- Do not leave the watch where there is strong vibration.
- Do not leave the watch in a dusty place.
- Do not expose the watch to gases or chemicals.  
(Ex.: Organic solvents such as benzine and thinner, gasoline, nail polish, cosmetic spray, detergent, adhesives, mercury, and iodine antiseptic solution.)
- Do not leave the watch near a hot spring, and do not keep it in a drawer having insecticides inside.

## ● PERIODIC CHECK

- Checking and overhauling of the watch (cal. 9S51/9S55/9S56) should be performed by SEIKO. When you take the watch to the retailer from whom it was purchased, request that the watch will be checked and overhauled by SEIKO.
- We suggest that you have your watch checked by SEIKO every 2 or 3 years for lubrication or damage due to water or sweat. After checking the watch, adjustment and repair may be required.
- When replacing the parts, please specify "SEIKO GENUINE PARTS."
- Be sure to have the gasket and push-pin replaced with new ones when having the watch checked.

## ■ TROUBLE SHOOTING

Trouble	Cause	Solution
<ul style="list-style-type: none"> <li>The watch stops operating.</li> </ul>	<ul style="list-style-type: none"> <li>The watch is not wound up.</li> </ul>	<ul style="list-style-type: none"> <li>Wind up the watch or swing the watch. The watch will start. If the watch does not start, contact the retailer from whom the watch was purchased.</li> </ul>
<ul style="list-style-type: none"> <li>The watch gains/loses time.</li> </ul>	<ul style="list-style-type: none"> <li>The watch was brought into close contact with a magnetic object.</li> </ul>	<ul style="list-style-type: none"> <li>Correct this condition by moving and keeping the watch away from the magnetic source. If this action does not correct the condition, contact the retailer from whom the watch was purchased.</li> </ul>
	<ul style="list-style-type: none"> <li>You dropped the watch, hit it against a hard surface or wore it while playing active sports.</li> <li>The watch was exposed to strong vibrations.</li> </ul>	<ul style="list-style-type: none"> <li>This condition needs to be corrected by a technician. Contact the retailer from whom the watch was purchased.</li> </ul>
	<ul style="list-style-type: none"> <li>The watch has not been checked for a long period. ex.) more than 3 years</li> </ul>	<ul style="list-style-type: none"> <li>Contact the retailer from whom the watch was purchased.</li> </ul>
<ul style="list-style-type: none"> <li>The date changes at 12 o'clock noon.</li> </ul>	<ul style="list-style-type: none"> <li>The time has been set improperly.</li> </ul>	<ul style="list-style-type: none"> <li>Advance the hands by 12 hours and adjust the calendar.</li> </ul>
<ul style="list-style-type: none"> <li>The glass is blurred and the blur persists for a long time.</li> </ul>	<ul style="list-style-type: none"> <li>Moisture has got inside the watch.</li> </ul>	<ul style="list-style-type: none"> <li>Contact the retailer from whom the watch was purchased.</li> </ul>

For the solution of troubles other than above, contact the retailer from whom the watch was purchased.

## ■ SPECIFICATIONS

Cal. number	9S51	9S55	9S56
1. Time indication	3 hands (hour, minute and second)	3 hands (hour, minute and second) with date	4 hands (24-hour, hour, minute and second) with date
2. Vibrations	28,800/h		
3. Driving system	Self-winding type with manual winding mechanism		
4. Jewels	24 jewels	26 jewels	27 jewels

## REMARKS ON REPLACEMENT PARTS

- SEIKO makes it a normal policy to keep a stock of spare parts for GRAND SEIKO watches for 10 years. In principle, your watch can be reconditioned within this period if used normally. (Replacement parts are those which are essential to maintain the functional integrity of the watch.)
- The number of years that a watch is considered reparable may vary greatly depending on the conditions under which it is used, and original accuracy may not be achieved in some cases. We recommend, therefore, that you consult the retailer from whom the watch was purchased when having your watch repaired.
- The case, dial, hands, glass and bracelet, or parts thereof may be replaced with substitutes if the originals are not available.