

SEIKO WATCH CORPORATION  
Copyright©2021 by SEIKO WATCH CORPORATION

Printed in Japan

SEIKO

简体中文 繁體中文



[REDACTED]

[REDACTED]

[REDACTED]

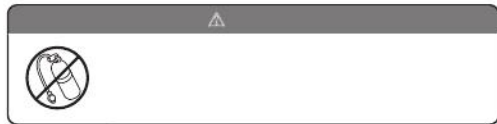
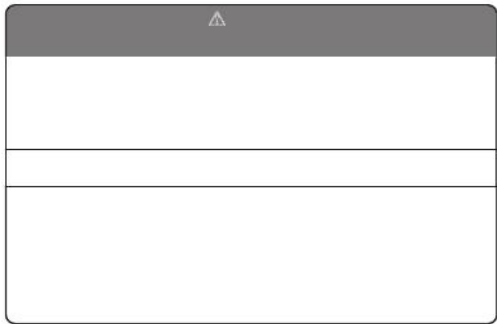
[REDACTED]

[REDACTED]

[REDACTED]

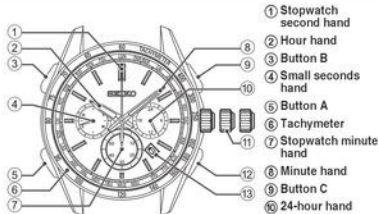
[REDACTED]

[REDACTED]





## Names of the parts and their functions



### ① Stopwatch second hand

### ② Hour hand

### ③ Button B

### ④ Small seconds hand

### ⑤ Button A

### ⑥ Tachymeter

### ⑦ Stopwatch minute hand

### ⑧ Minute hand

### ⑨ Button C

### ⑩ 24-hour hand

### ⑪ Crown

- Normal position: How to select the time zone → P.32, Checking the reception result → P.28, Manual reception → P.78, Stopwatch function → P.28
- First click position: Manual date setting → P.84
- Second click position: Manual time setting → P.82, Reset the system → P.102

### ⑫ Button D

### ⑬ Date

\* The operation method of the button varies with the functions being used. Follow the instructions of each section of this manual.

\* The position and design of the display may vary depending on the model.

\* Some models may not have a tachymeter.

## ● Reception level display

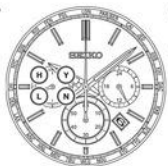
### [Manual reception]

H : High reception level (50-second position)

L : Low reception level (40-second position)

N : Unable to receive radio signals (20-second position)

\* Reception level display → P.80



## ● Reception result display

### [Check of reception result]

Y : Reception successful (10-second position)

N : Reception failed (20-second position)

\* How to display the reception results → P.28

## ● Standard radio signal display

Display (Country with radio signal transmitting station)	Display position
J / JJY (Japan)	23-second position
B / BPC (China)	21-second position
W / WWVB (U.S.A.)	43-second position
D / DCF77 (Germany)	3-second position

\* World time function → P.30

## ● Time zone display

### [Time zone selection]

City names: 25 regions around the world

\* How to select the time zone (How to display the local time around the world) → P.32

\* Time zone display and time difference table → P.34

\* Indication on the bezel or positions of each item on the dial may vary depending on the model (design).

## How to use the button

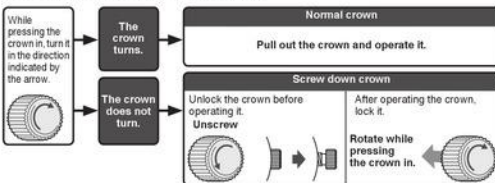
Some models may have a button which is recessed in the watch case to prevent accidental input. Shape of the button differs depending on the design of the watch.

Normal Button	Upper half of the Button B is covered.	Button B has an outer ring.	Button B is covered except the hollow in the middle of the button.	Button B is embedded in the watchcase.
Press the button with your finger	Use an object with a long tapered tip. * You can also press the lower half of the button with your finger.	1. Turn the outer ring counterclockwise (to a downward direction) to loosen it. 2. Press the button with your finger. * After finishing the operation, make sure to relock the outer ring by turning it clockwise.	Press the button using an object with a long tapered tip.	

## Crown

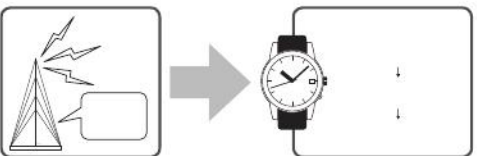
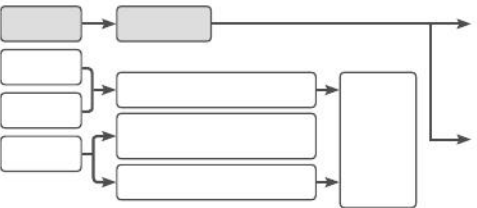
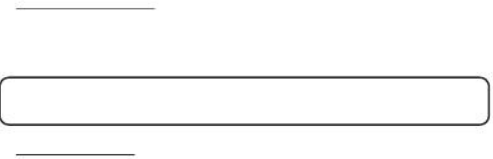
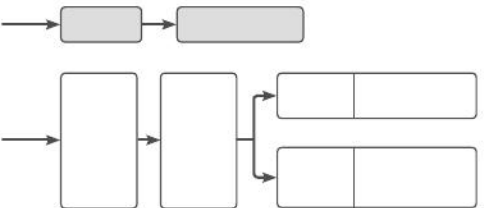
There are two types of crowns, a normal crown and a screw down crown.

Please check the type of the crown of your watch.



\* By locking the crown by screw, a screw down crown can prevent malfunction and increase water resistance.

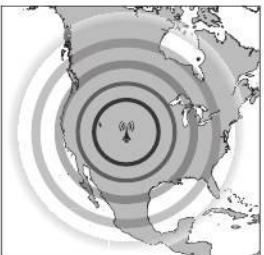
\* Be careful not to screw the crown in by force as it may damage the slots of the crown.



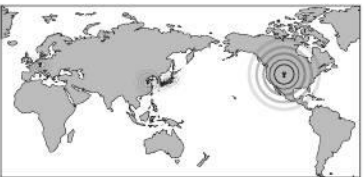
HOW TO SET THE TIME (RADIO SIGNAL RECEPTION)



HOW TO SET THE TIME (RADIO SIGNAL RECEPTION)

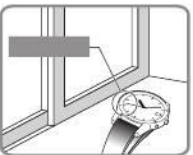


HOW TO SET THE TIME (RADIO SIGNAL RECEPTION)



HOW TO SET THE TIME (RADIO SIGNAL RECEPTION)






---



---



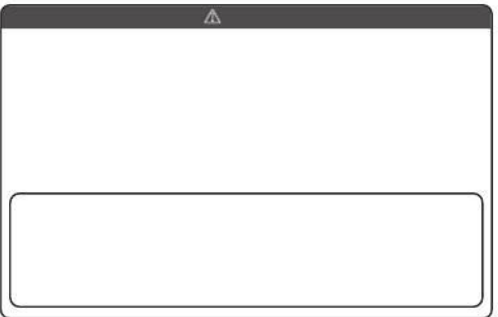
---

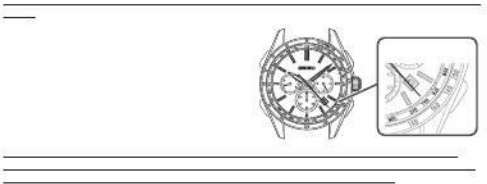
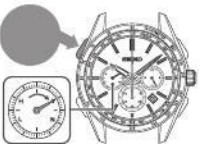
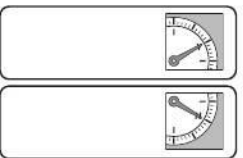


---



---

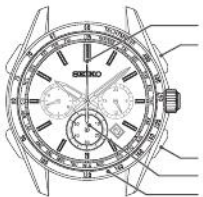


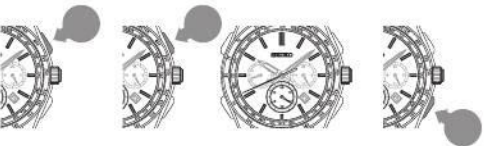
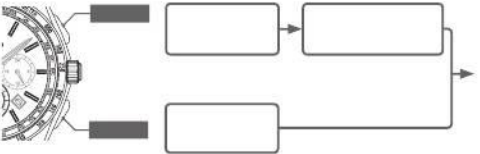
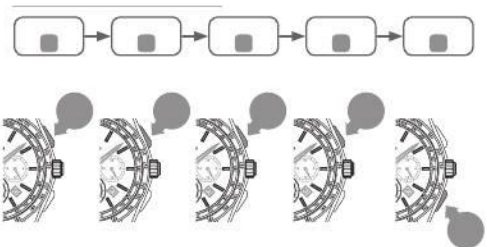
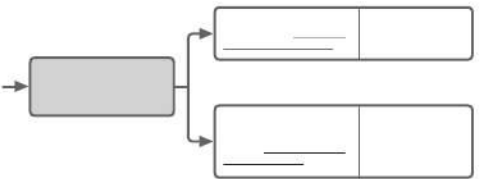


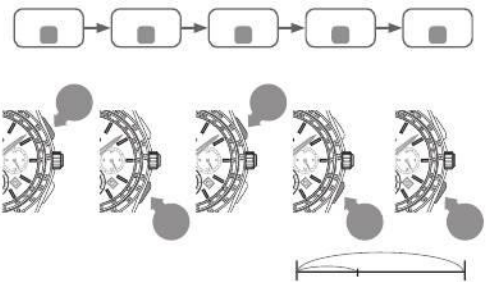
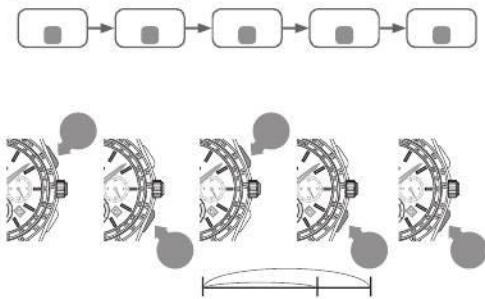




- ①
- ②
- ③
- ④
- ⑤









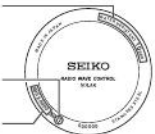




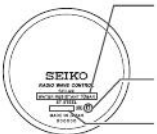
TO PRESERVE THE QUALITY OF YOUR WATCH



TO PRESERVE THE QUALITY OF YOUR WATCH



\_\_\_\_\_



\_\_\_\_\_

\_\_\_\_\_

TO PRESERVE THE QUALITY OF YOUR WATCH



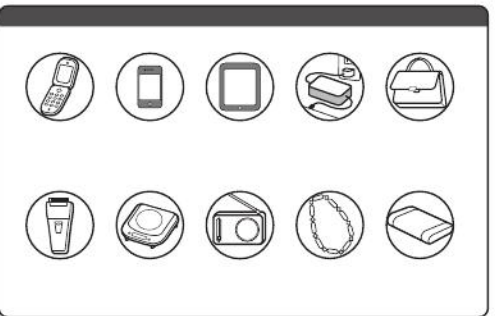
\_\_\_\_\_

\_\_\_\_\_

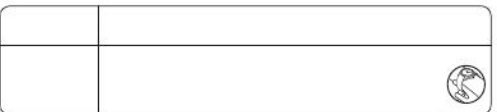
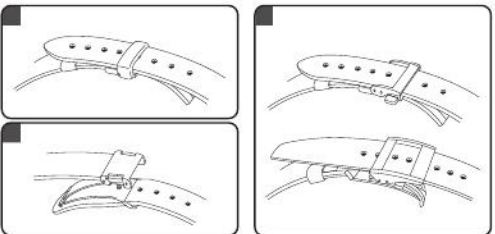
\_\_\_\_\_

TO PRESERVE THE QUALITY OF YOUR WATCH

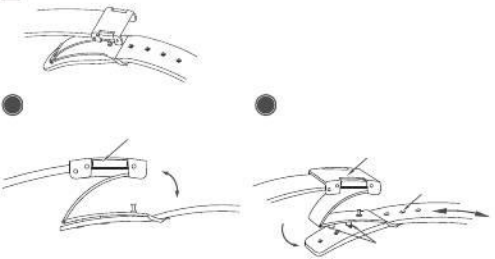
		⚠
< >		



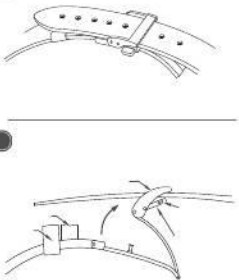
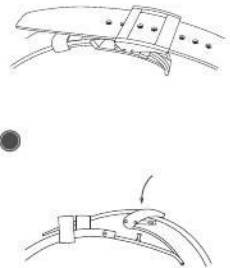
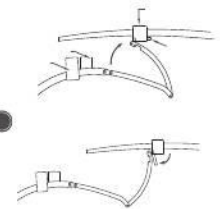
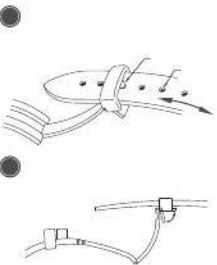
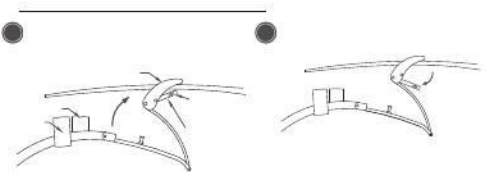
	⚠
⌂	
⌂	

TO PRESERVE THE QUALITY OF YOUR WATCH



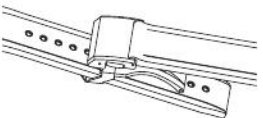
TO PRESERVE THE QUALITY OF YOUR WATCH



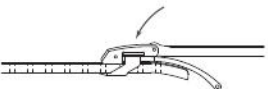
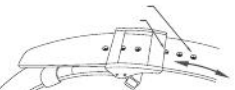
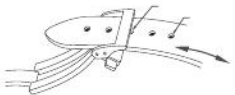
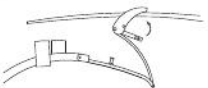
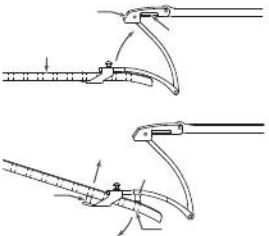
TO PRESERVE THE QUALITY OF YOUR WATCH

TO PRESERVE THE QUALITY OF YOUR WATCH

TO PRESERVE THE QUALITY OF YOUR WATCH

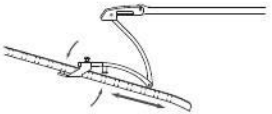
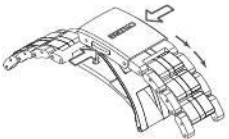
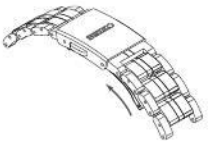
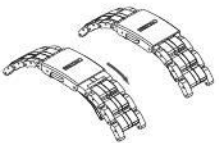


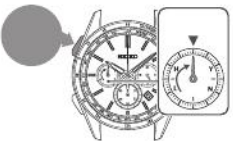
TO PRESERVE THE QUALITY OF YOUR WATCH



TO PRESERVE THE QUALITY OF YOUR WATCH

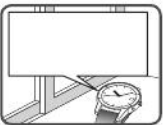
TO PRESERVE THE QUALITY OF YOUR WATCH





---

---



\_\_\_\_\_

\_\_\_\_\_

