

セイコーウォッチ株式会社

SEIKO

取扱説明書 / INSTRUCTIONS

使用说明书 / 使用说明書

1B22・1B32 ソーラー電波

C-22

Thank you very much for choosing a SEIKO watch.
For proper and safe use of your SEIKO watch,
please read carefully the instructions in this
booklet before using.

Keep this manual handy for easy reference.

- ※ Length adjustment service for metallic bands is available at the retailer from whom the watch was purchased or SEIKO CUSTOMER SERVICE CENTER. The service may also be available on a chargeable basis.
The service may also be available at other retailers, however, some retailers may not undertake the service.
- ※ If your watch has a protective film for preventing scratches, make sure to peel it off before using the watch. If the watch is used with the film on it, dirt, sweat, dust, or moisture may be attached to the film and may cause rust.



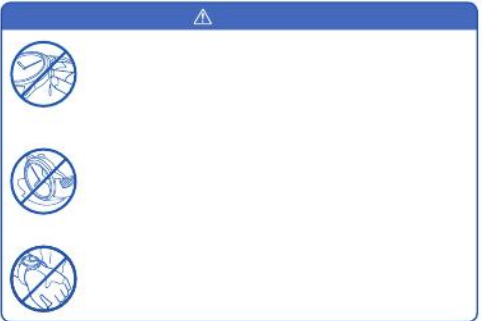
About this Product

⚠



About this Product

About this Product



About this Product

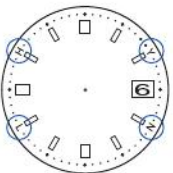
About this Product



About this Product

About this Product

About this Product

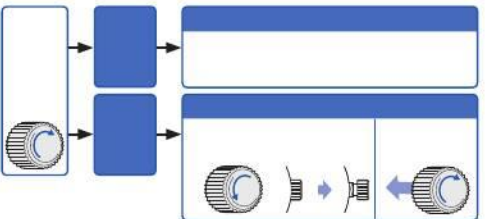


About this Product

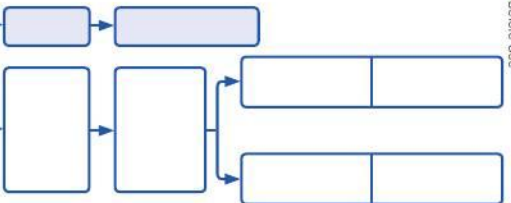
About this Product



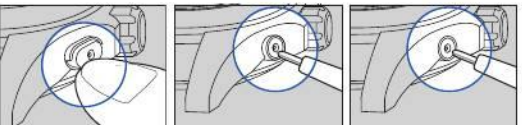
About this Product



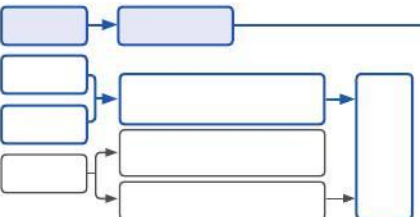
Before Use



About this Product



Before Use

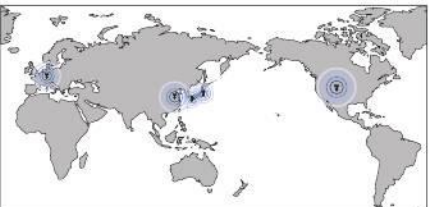


How to Set the Time (Radio Signal Reception)



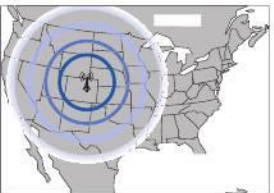
How to Set the Time (Radio Signal Reception)

How to Set the Time (Radio Signal Reception)

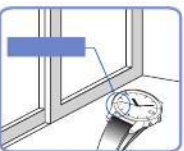


How to Set the Time (Radio Signal Reception)

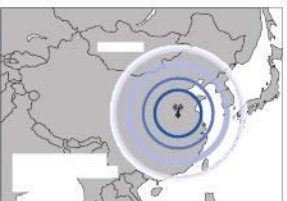
How to Set the Time (Radio Signal Reception)



How to Set the Time (Radio Signal Reception)

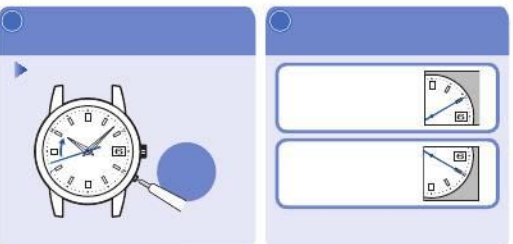
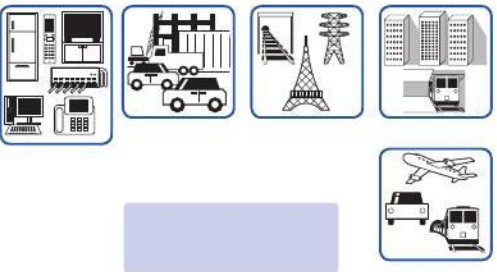
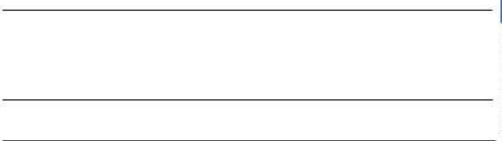


How to Set the Time (Radio Signal Reception)





How to Set the Time (Radio Signal Reception)





Solar Charging Function

Solar Charging Function

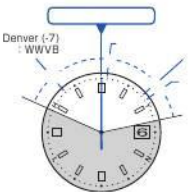


Solar Charging Function

Solar Charging Function

Time difference adjustment
(when using the watch overseas)

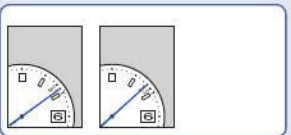
Blank light blue rectangular area for notes.



Blank white lines for notes.

Time difference adjustment
(when using the watch overseas)

Time difference adjustment
(when using the watch overseas)



Blank light blue rectangular area for notes.



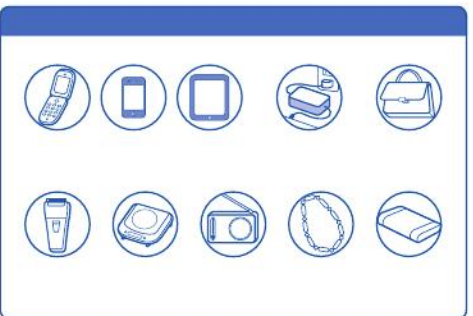
Blank white rectangular area for notes.



Blank light blue rectangular area for notes.

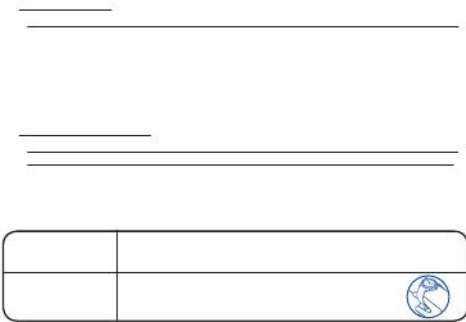
Time difference adjustment
(when using the watch overseas)

	⚠

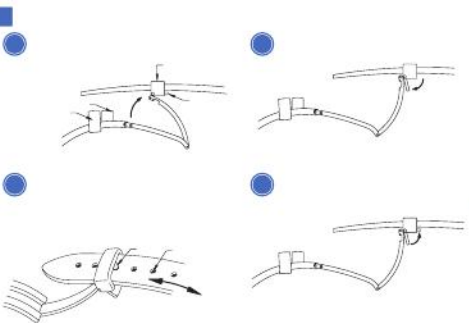


C	
C	

To Preserve the Quality of Your Watch



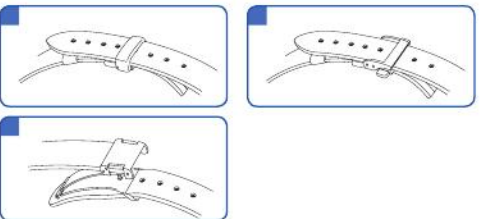
To Preserve the Quality of Your Watch



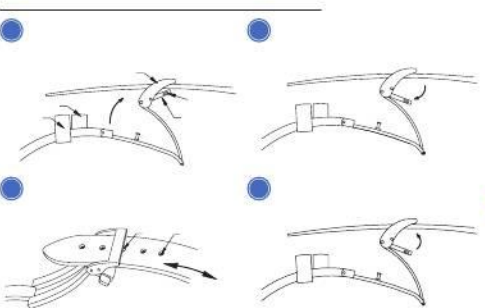
To Preserve the Quality of Your Watch



To Preserve the Quality of Your Watch



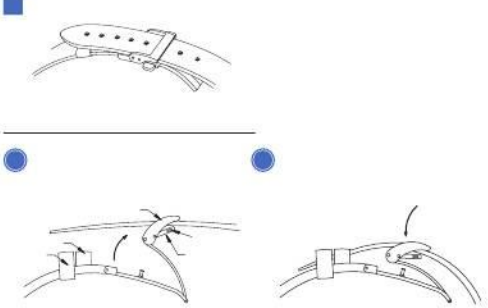
To Preserve the Quality of Your Watch



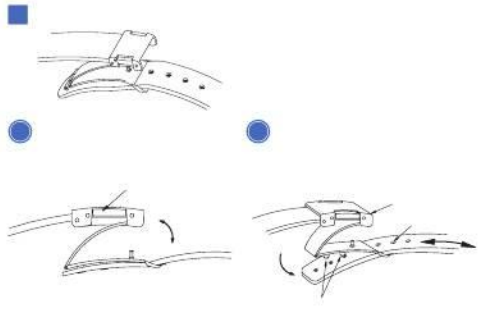
To Preserve the Quality of Your Watch



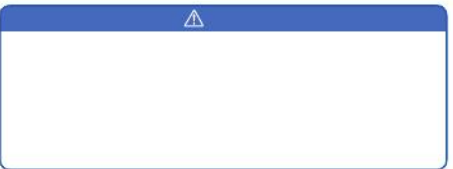
To Preserve the Quality of Your Watch



To Preserve the Quality of Your Watch



To Preserve the Quality of Your Watch



To Preserve the Quality of Your Watch

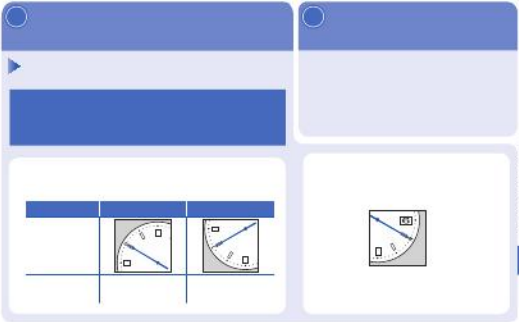


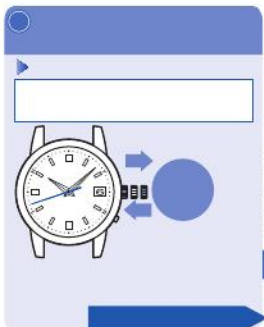
To Preserve the Quality of Your Watch



To Preserve the Quality of Your Watch











Troubleshooting							

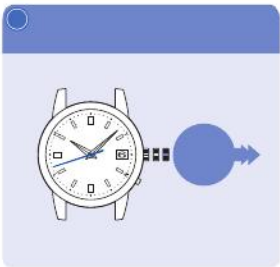


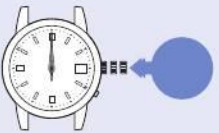
Troubleshooting

Troubleshooting

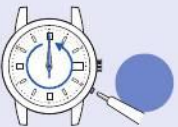
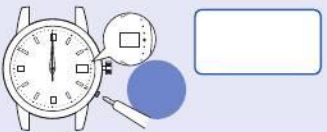
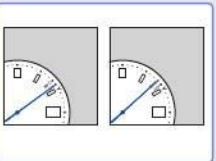
Troubleshooting

Troubleshooting





One minute after the hour and minute hands stop after the operation ③, the time difference adjustment mode is finished.



セイコーウォッチ株式会社