

セイコーウォッチ株式会社

SEIKO

I N S T R U C T I O N S



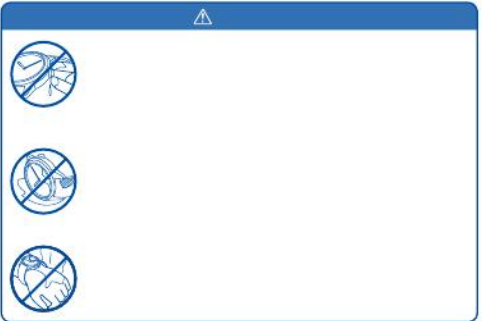
About this Product

⚠

⚠

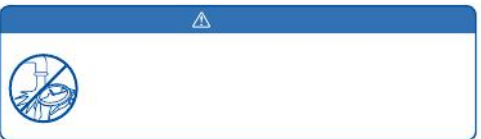
About this Product

About this Product



About this Product

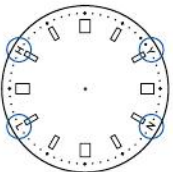
About this Product



About this Product

About this Product

About this Product

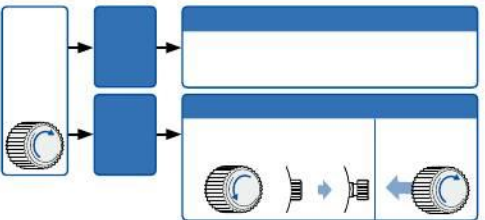


About this Product

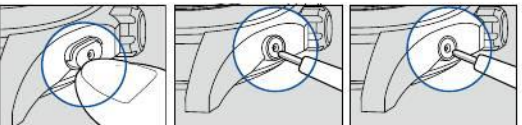
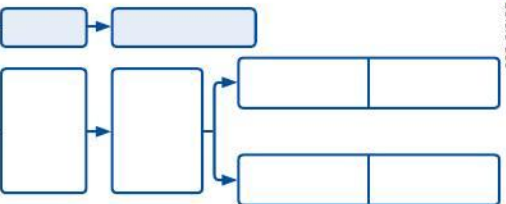
About this Product



About this Product

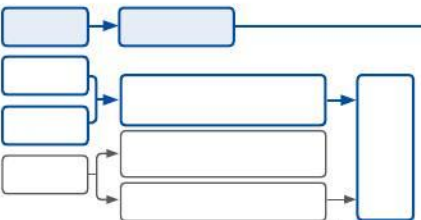


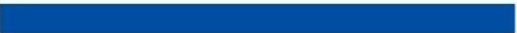
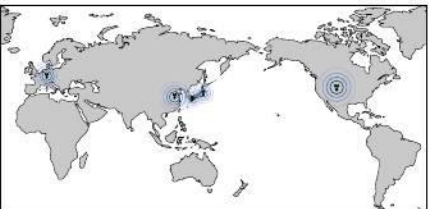
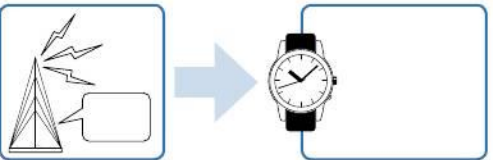
Before Use



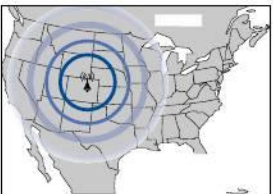
About this Product

Before Use

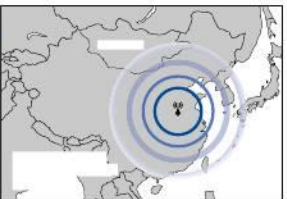
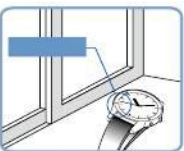




How to Set the Time (Radio Signal Reception)

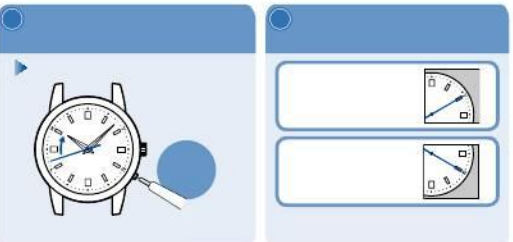
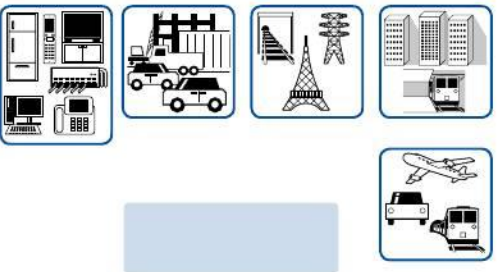
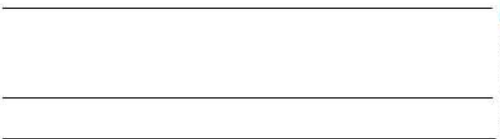
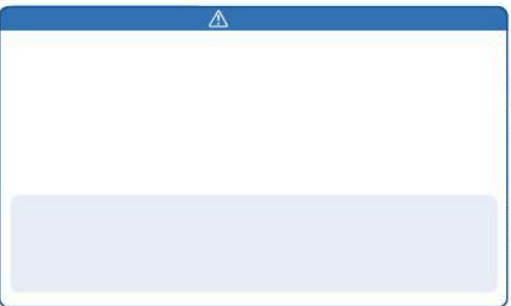


How to Set the Time (Radio Signal Reception)





How to Set the Time (Radio Signal Reception)

How to Set the Time (Radio Signal Reception)



Solar Charging Function

Solar Charging Function

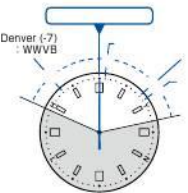


Solar Charging Function

Solar Charging Function

Time difference adjustment
(when using the watch overseas)

Blank light blue rectangular area for notes.

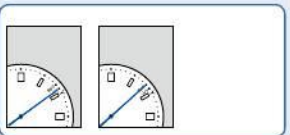


Blank white rectangular area with horizontal lines for notes.

Time difference adjustment
(when using the watch overseas)

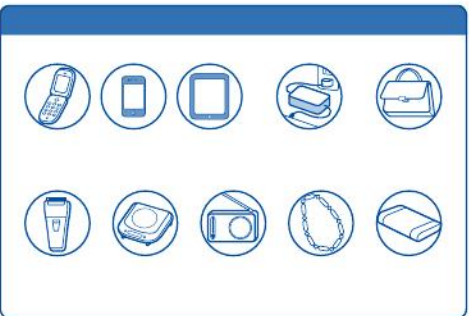
Time difference adjustment
(when using the watch overseas)

Blank light blue rectangular area for notes.



Time difference adjustment
(when using the watch overseas)

		⚠

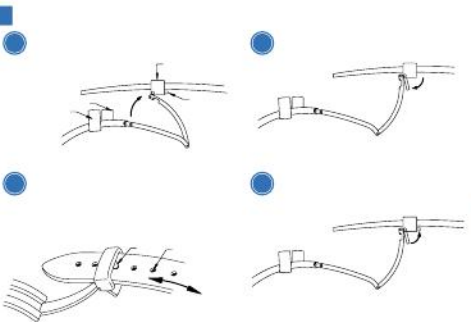


C C C	

To Preserve the Quality of Your Watch

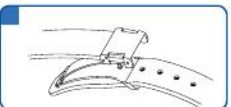
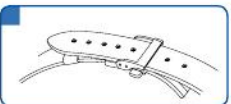
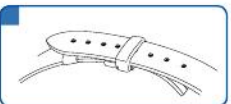


To Preserve the Quality of Your Watch

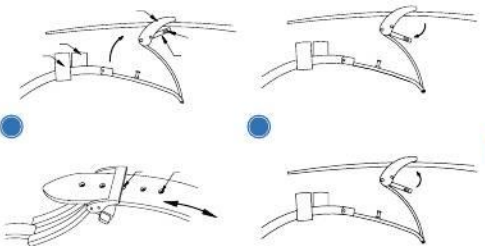


To Preserve the Quality of Your Watch

To Preserve the Quality of Your Watch

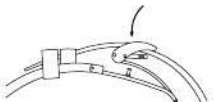
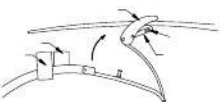
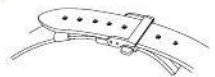


To Preserve the Quality of Your Watch

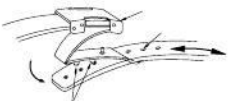
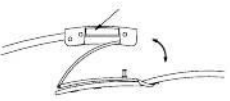
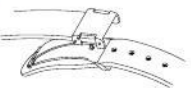


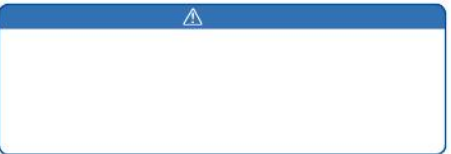
To Preserve the Quality of Your Watch

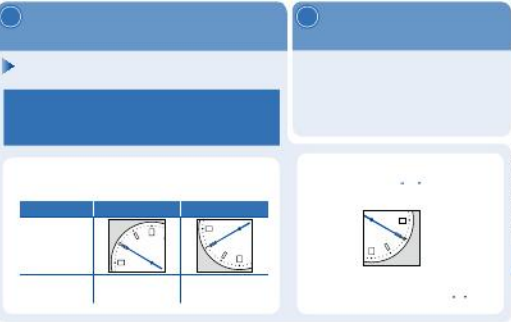
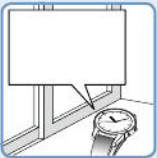
To Preserve the Quality of Your Watch



To Preserve the Quality of Your Watch









Troubleshooting				

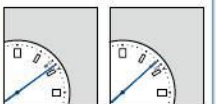
Troubleshooting				

Troubleshooting

Troubleshooting

Troubleshooting

Troubleshooting



One minute after the hour and minute hands stop after the operation ③, the time difference adjustment mode is finished.

セイコーウォッチ株式会社