

PULSAR

CAL. VK68 CHRONOGRAPH

TIME/CALENDAR

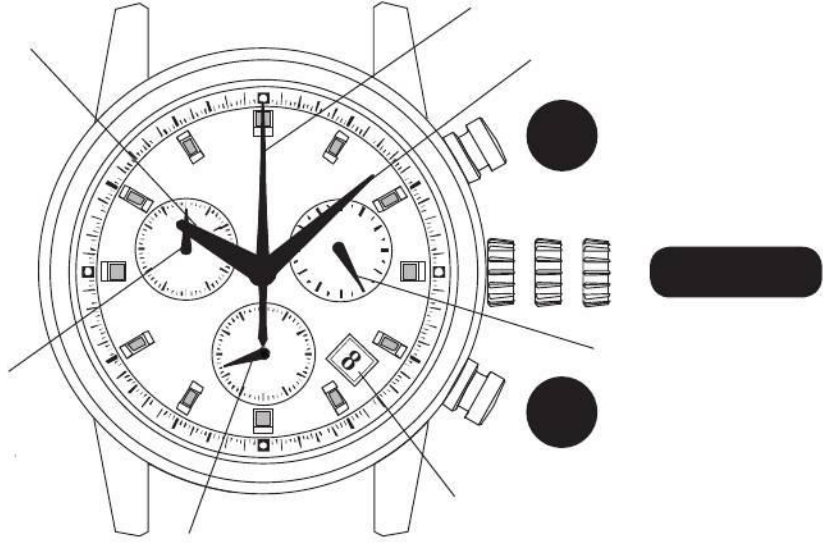
- Hour and minute hands with small second and 24-hour hands
- Date displayed in numerals

CHRONOGRAPH

- Measures up to 60 minutes in 1/5 second increment

ENGLISH

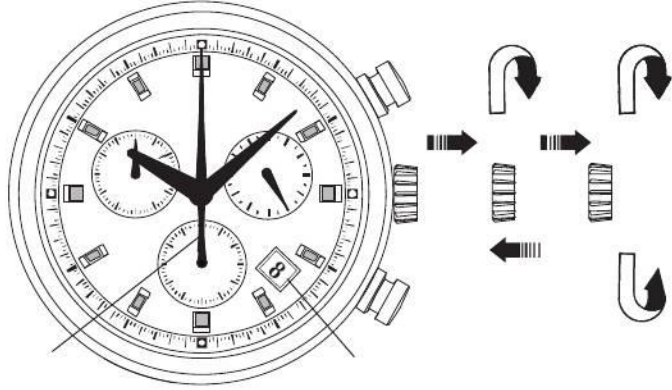
English

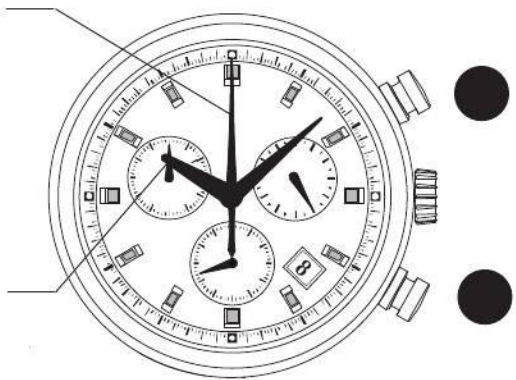




English

English





English

English



TACHYMETER

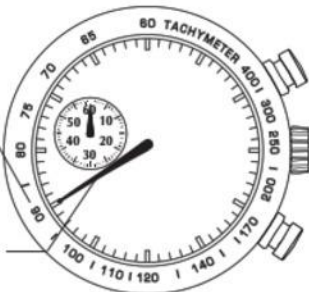
[for models with tachymeter scale on the dial]

To measure the hourly average speed of a vehicle

Ex. 1

Tachymeter
scale: "90"

CHRONOGRAPH
second hand:
40 seconds



"90" (tachymeter scale figure) x
1 (km or mile) = **90 km/h or mph**

1 Use the stopwatch to determine how many seconds it takes to go 1 km or 1 mile.



2 Locate the second marker on the main dial that corresponds to the measured seconds, and the tachymeter scale it indicates gives the average speed per hour.

Tachymeter scale can be used only when the time required is less than 60 seconds.

Ex. 2: If the measuring distance is extended to 2 km or miles or shortened to 0.5 km or miles and CHRONOGRAPH second hand indicates "90"

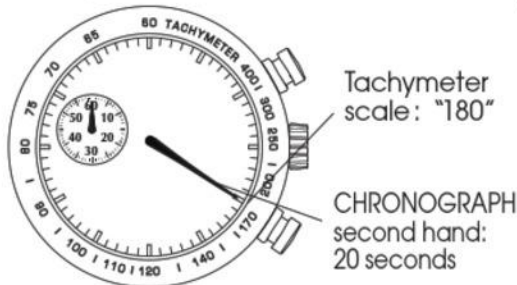
on tachymeter scale:

“90” (tachymeter scale figure) x 2 (km or mile) = 180 km/h or mph

“90” (tachymeter scale figure) x 0.5 (km or mile) = 45 km/h or mph

To measure the hourly rate of operation

Ex. 1



“180” (tachymeter scale figure) x
1 job = **180 jobs/hour**

1 Use the stopwatch to measure the time required to complete 1 job.



2 Locate the second marker on the main dial that corresponds to the measured seconds, and the tachymeter scale it indicates gives the average number of jobs accomplished per hour.

Ex. 2: If 15 jobs are completed in 20 seconds:

“180” (tachymeter scale figure) x 15 jobs = 2700 jobs/hour

NOTES ON OPERATING THE WATCH

TIME SETTING

- If the crown is pulled out to the second click while the chronograph is counting, the CHRONOGRAPH hands will continue to move. This is not a malfunction.
- When setting the minute hand, first advance it 4 to 5 minute ahead of the desired time and then turn it back to the exact minute.

24-hour setting

- The 24-hour hand moves correspondingly with the hour hand.
- When setting the hour hand, check that the 24-hour hand is correctly set.

CALENDAR SETTING

- It is necessary to adjust the date on the first day after a 30-day month and February.
- Do not set the date between 9:00 p.m. and 3:00 a.m, as this will cause a malfunction.

CHRONOGRAPH

- Restart and stop of the chronograph can be repeated as many times as necessary by pressing button A.

BATTERY CHANGE

3
Years

Battery life : Approx. 3 years

Battery : SEIKO SR936SW

- *If the chronograph is used for more than 60 minutes a day, the battery life may be less than the specified period.*
- *As the battery is inserted at the factory to check the function and performance of the watch, its actual life once in your possession may be less than the specified period.*
- *When the battery expires, be sure to replace it as soon as possible to prevent any malfunction.*
- *We recommend that you contact an AUTHORIZED PULSAR DEALER for battery replacement.*



WARNING

- Do not remove the battery from the watch.
- If it is necessary to take out the battery, keep it out of the reach of children. If a child swallows it, consult a doctor immediately.
- Never short-circuit, tamper with or heat the battery, and never expose it to fire. The battery may burst, become very hot or catch fire.



CAUTION

- The battery is not rechargeable. Never attempt to recharge it, as this may cause battery leakage or damage to the battery.

TO PRESERVE THE QUALITY OF YOUR WATCH

WATER RESISTANCE

● Non-water resistant



If “WATER RESISTANT” is not inscribed on the case back, your watch is not water resistant, and care should be

taken not to get it wet as water may damage the movement. If the watch becomes wet, we suggest that you have it checked by an AUTHORIZED PULSAR DEALER or SERVICE CENTER.

● Water resistance (3 bar)



If “WATER RESISTANT” is inscribed on the case back, your watch is designed and manufactured to withstand

up to 3 bar, such as accidental contact with splashes of water or rain, but it is not designed for swimming or diving.

● Water resistance (5 bar)*



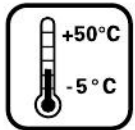
If “WATER RESISTANT 5 BAR” is inscribed on the case back, your watch is designed and manufactured to withstand up to 5 bar and is suitable for swimming, yachting and taking a shower.

● Water resistance (10 bar/15 bar/20 bar)*



If “WATER RESISTANT 10 BAR”, “WATER RESISTANT 15 BAR” or “WATER RESISTANT 20 BAR” is inscribed on the

case back, your watch is designed and manufactured to withstand up to 10 bar/15 bar/20 bar and is suitable for taking a bath, shallow diving, but not for scuba diving. We recommend that you wear a PULSAR Diver's watch for scuba diving.



English

